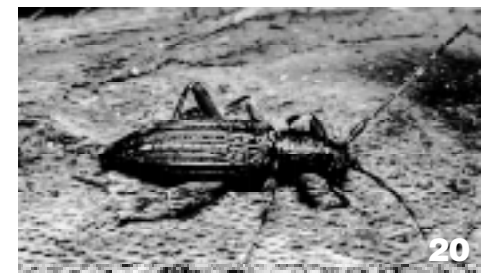
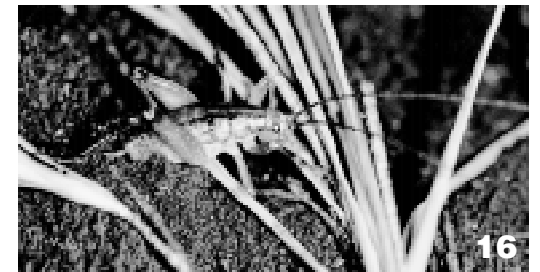
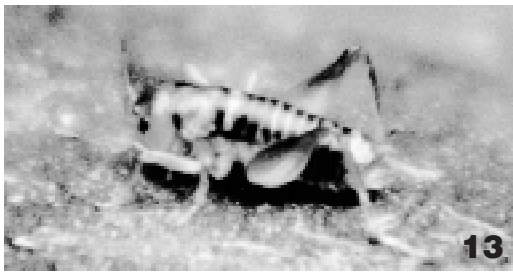
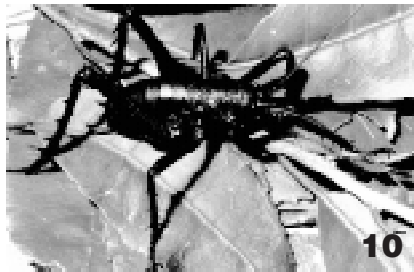
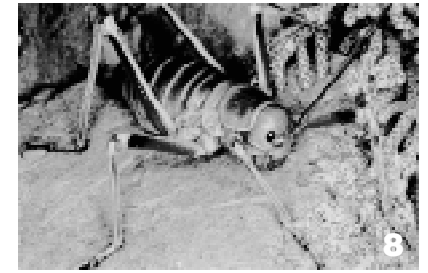
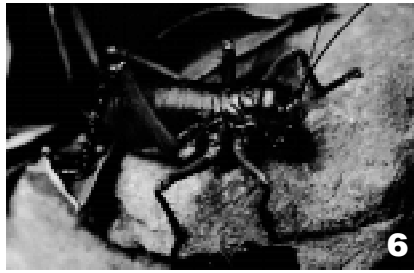
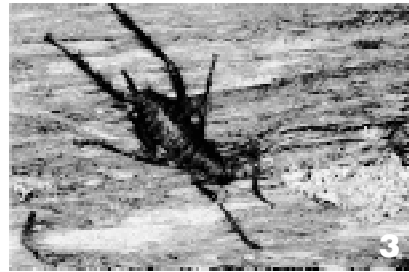
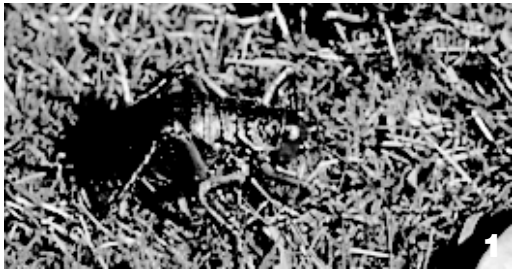


## Plate 1: Moths

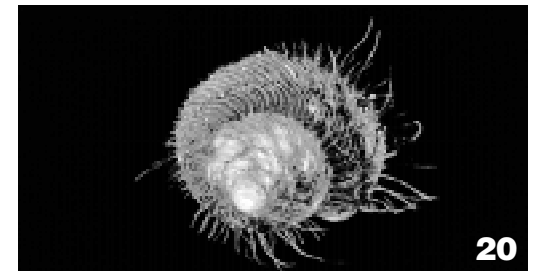
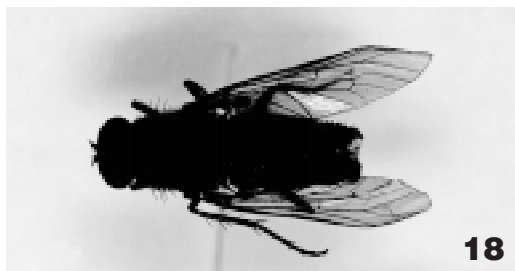
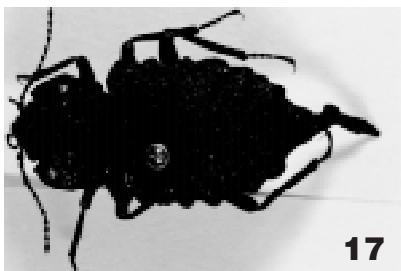
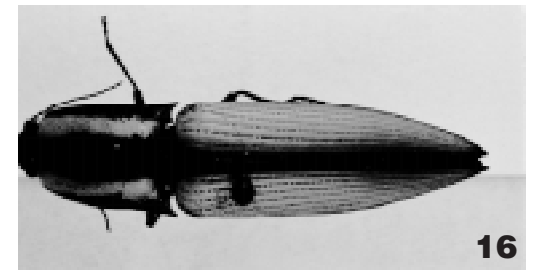
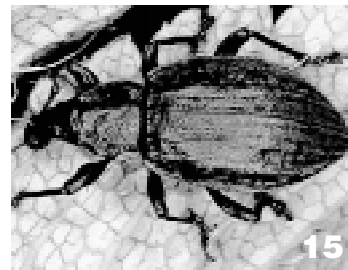
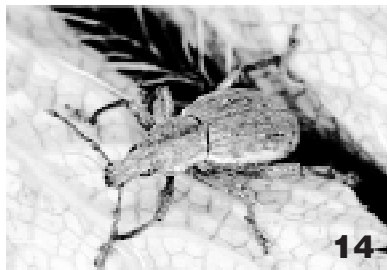
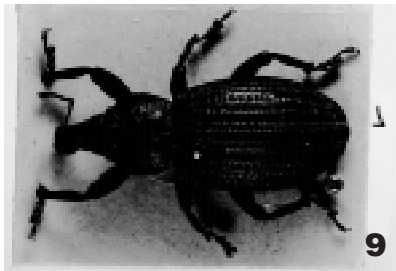
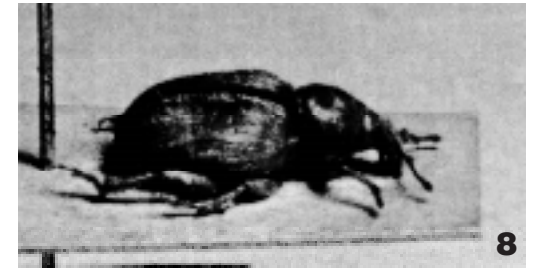
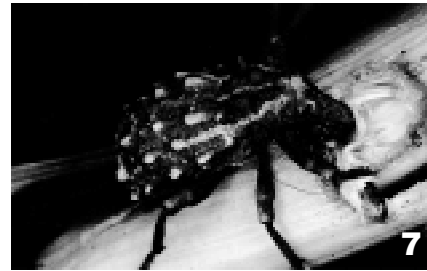
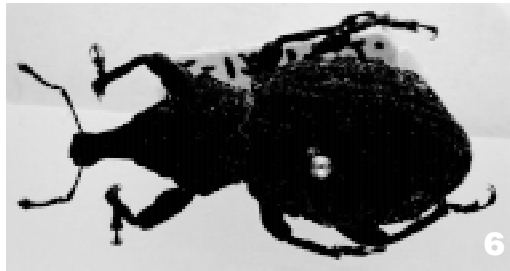
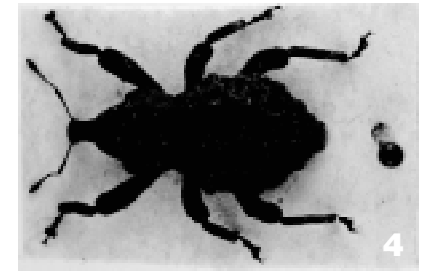
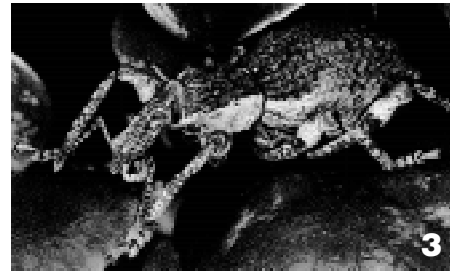
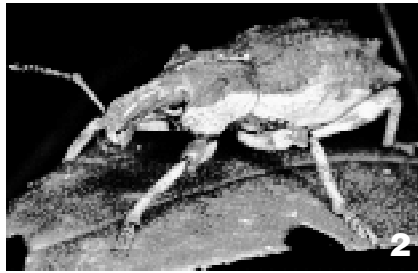
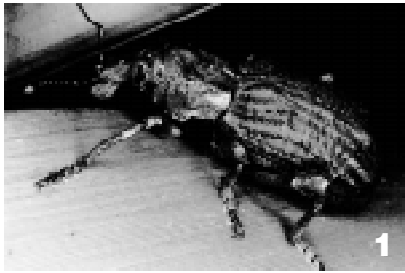
1. *Notoreas* “South Shag River”. Photo: Brian Patrick.
2. *Notoreas* “Taranaki Coast”. Photo: Brian Patrick.
3. *Notoreas* “Wellington”. Photo: Brian Patrick.
4. *Notoreas* larva on *Pimelea* sp . Photo: Brian Patrick.
5. *Asaphodes stinaria*. Photo: Andrew Townsend.
6. *Gingidiobora nebulosa*. Photo: Brian Patrick.
7. *Xanthorhoe bulbulata*. Photo: Brian Patrick.
8. *Heloxycanus patricki*. Photo: Brian Patrick.
9. *Meterana* “Foveaux Strait” adult. Photo: Brian Patrick.
10. *Meterana* “Foveaux Strait” larva. Photo: Brian Patrick.
11. *Meterana pictula* adult. Photo: Brian Patrick.
12. *Meterana pictula* larva. Photo: Brian Patrick.
13. *Orocrambus* “Mackenzie Basin” male. Photo: Brian Patrick.
14. *Orocrambus* “Mackenzie Basin” female. Photo: Brian Patrick.
15. *Orocrambus fugitivellus* male. Photo: Brian Patrick.
16. *Orocrambus fugitivellus* female. Photo: Brian Patrick.
17. *Orocrambus sophronellus* male. Photo: Brian Patrick.
18. *Orocrambus sophronellus* female. Photo: Brian Patrick.
19. *Titanomis sisyrota*. Permission: Landcare Research (NZ) Ltd.
20. *Olinga fumosa*. Photo: Brian Patrick.



*Plate 2: Weta, Grasshoppers and Longhorn Beetles*

## Plate 2: Weta, Grasshoppers & Longhorn Beetles

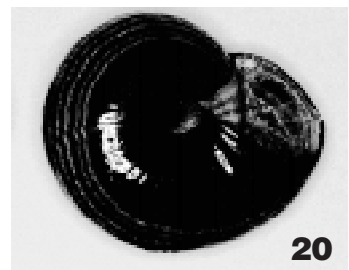
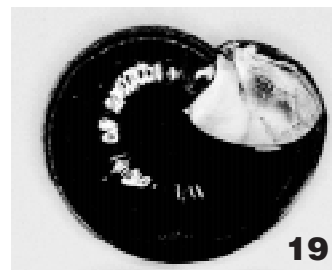
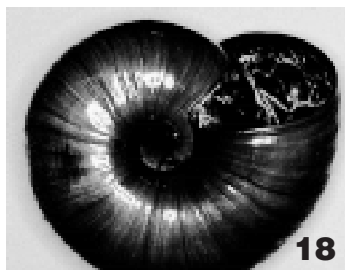
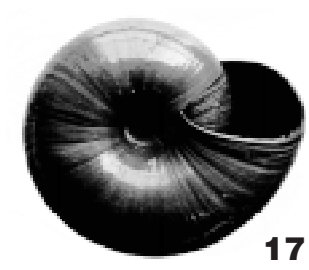
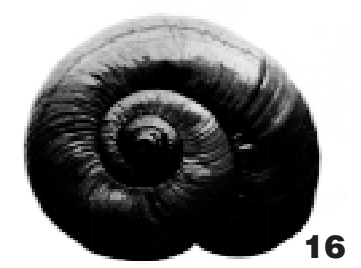
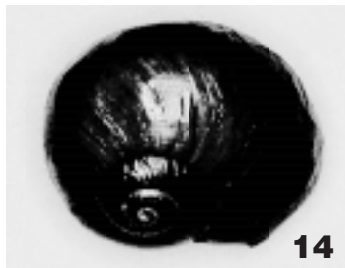
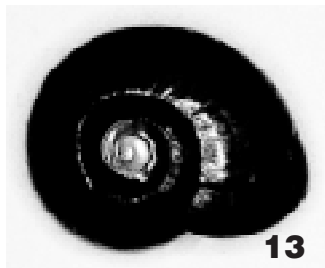
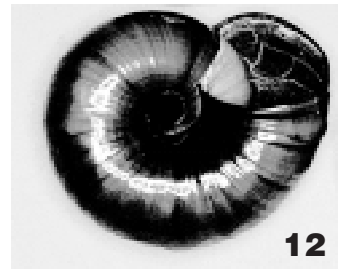
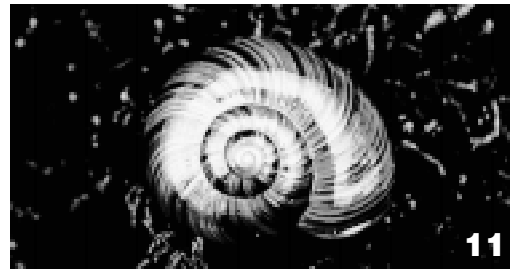
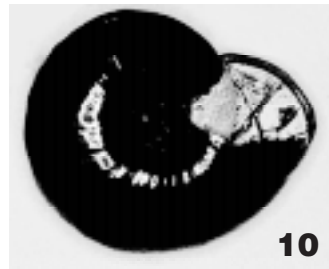
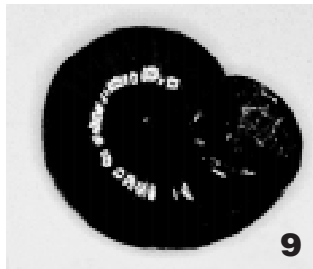
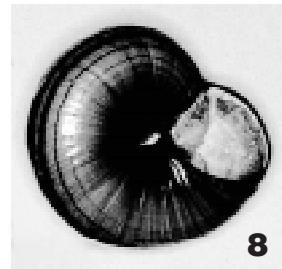
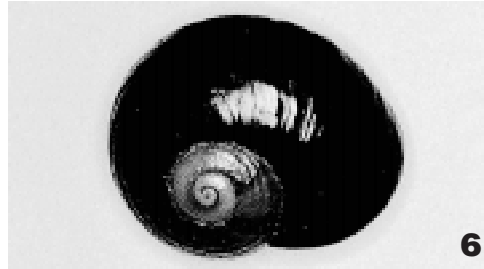
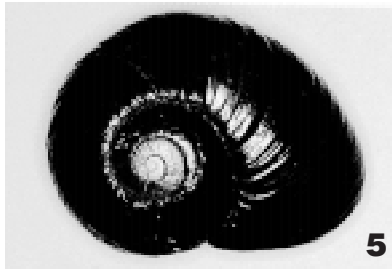
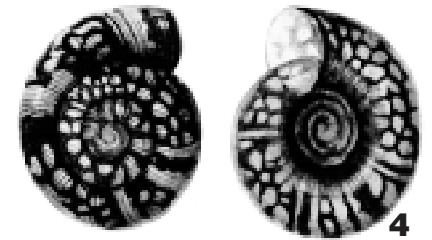
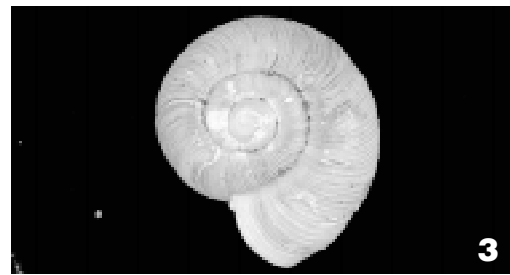
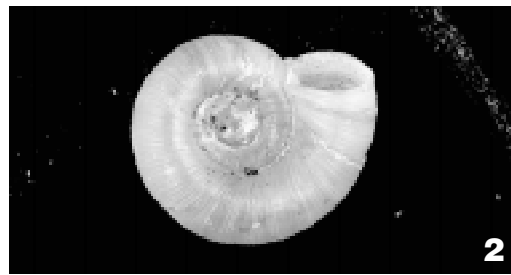
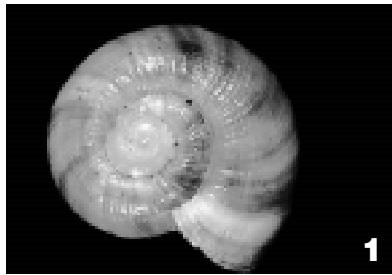
1. *Deinacrida carinata* female. Permission: Landcare Research (NZ) Ltd. Photo: M. D. King.
2. *Deinacrida fallai* female. Photo: George Gibbs, Victoria University of Wellington.
3. *Deinacrida heteracantha* female. Permission: Manaaki Whenua Press. Meads 1990a, p. 17.
4. *Deinacrida parva* male. Permission: Manaaki Whenua Press. Meads 1990a, p. 19.
5. *Deinacrida rugosa* male. Permission: Manaaki Whenua Press. Meads 1990a, p. 15.
6. *Deinacrida talpa* male. Photo: B. Robertson, VUW photo.
7. *Deinacrida pluvialis* male. Photo: Andrew Townsend.
8. *Deinacrida elegans*. Permission: Manaaki Whenua Press. Meads & Notman 1991, p 10, Fig 1.
9. *Deinacrida tibiospina* female. Photo: Mike Meads.
10. *Deinacrida maboenui* male. Permission: Manaaki Whenua Press. Meads 1990a, p 25.
11. *Anisoura nicobarica* male. Photo: Andrew Townsend.
12. *Motuweta isolata* male. Photo: B. Robertson, VUW photo.
13. *Hemiandrus* "Cape Campbell". Photo: Peter Johns.
14. *Hemideina ricta* female. Photo: George Gibbs, Victoria University of Wellington.
15. *Gymnoplectron giganteum*. Photo: Richard Parrish.
16. *Talitropsis crassicuris*. Photo: Steve Trewick.
17. *Brachaspis robustus*. Permission: Manaaki Whenua Press. Meads 1990a, p 29.
18. *Nesoptychias simpliceps*. Photo: Andrew Townsend.
19. *Blosyropus spinosus*. Photo: Andrew Townsend.
20. *Xylotoles costatus*. Photo: John Marris, Lincoln University.



*Plate 3: Beetles, Flies, Peripatus and Snails*

## Plate 3: Beetles, Flies, Peripatus, & Snails

1. *Anagotus fairburni*. Permission: Manaaki Whenua Press. Meads 1990a, p. 43.
2. *Anagotus stephenensis*. Permission: Manaaki Whenua Press. Meads 1990a, p. 45.
3. *Anagotus turbotti*. Permission: Manaaki Whenua Press. Meads 1990a, p. 45.
4. *Tychanopais tuberosus*. Photo: Andrew Townsend.
5. *Hadramphus spinipennis*. Photo: John Marris, Lincoln University.
6. *Hadramphus tuberculatus*. Photo: Andrew Townsend.
7. *Hadramphus stilbocarpae*. Permission: Manaaki Whenua Press. Meads 1990a, p. 45.
8. *Thotmus balli*. Photo: John Marris, Lincoln University.
9. *Lyperobius buttoni*. Photo: Andrew Townsend.
10. *Lyperobius carinatus*. Photo: Andrew Townsend.
11. *Heterexis seticostatus*. Permission: Manaaki Whenua Press. Meads 1990a, p. 31.
12. *Stephanorhynchus insolitus*. Photo: Andrew Townsend.
13. *Nothaldonus peacei*. Photo: Andrew Townsend.
14. *Oclandius cinereus*. Permission: Manaaki Whenua Press. Meads 1990a, p. 10.
15. *Oclandius laeviusculus*. Permission: Manaaki Whenua Press. Meads 1990a, p. 30.
16. *Metablax* sp. Photo: Andrew Townsend.
17. *Syrphetodes* sp. Photo: Andrew Townsend.
18. *Anabarhynchus waitarerensis*. Photo: Andrew Townsend.
19. *Ooperipatellus insignis* (NZ specimen originally *Ooperipatellus viridimaculatus*).  
Photo: Ruhberg/Bosch. Permission: D. Gleeson, Landcare Research (NZ) Ltd.
20. *Cytora hirsutissima*. Photo: Andrew Townsend.



## Plate 4: Snails

1. *Delos regia*. Photo: Andrew Townsend.
2. *Delos striata* dorsal. Photo: Andrew Townsend.
3. *Delos striata* ventral. Photo: Andrew Townsend.
4. *Delouagapia cordelia*. Permission: Harper Collins Publishers (NZ) Ltd. Powell 1979, Plate 65, Figs. 12, 13.
5. *Paryphanta busbyi busbyi*. Permission: Manaaki Whenua Press. Meads 1990a, p. 72.
6. *Paryphanta busbyi watti*. Permission: Manaaki Whenua Press. Meads 1990a, p. 72.
7. *Powelliphanta annectens*. Permission: Manaaki Whenua Press. Meads 1990a, p. 80.
8. *Powelliphanta gilliesi aurea*. Permission: Manaaki Whenua Press. Meads 1990a, p. 78, Fig. 2.
9. *Powelliphanta gilliesi brunnea*. Permission: Manaaki Whenua Press. Meads 1990a, p. 78, Fig. 1.
10. *Powelliphanta gilliesi montana*. Permission: Manaaki Whenua Press. Meads 1990a, p. 78, Fig. 4.
11. *Powelliphanta lignaria lusca*. Photo: Kath Walker.
12. *Powelliphanta marchanti*. Permission: Manaaki Whenua Press. Meads 1990a, p. 76, Fig. 3.
13. *Powelliphanta rossiana fletcheri*. Permission: Manaaki Whenua Press. Meads 1990a, p. 81, Fig. 1.
14. *Powelliphanta spedeni spedeni*. Permission: Manaaki Whenua Press. Meads 1990a, p. 81, Fig. 2.
15. *Powelliphanta superba harveyi*. Permission: Manaaki Whenua Press. Meads 1990a, p. 79, Fig. 1.
16. *Powelliphanta superba prouseorum* top view. Permission: Harper Collins Publishers (NZ) Ltd. Powell 1979, Plate 66, Fig. 4.
17. *Powelliphanta superba prouseorum* ventral view. Permission: Harper Collins Publishers (NZ) Ltd. Powell 1979, Plate 66, Fig. 5.
18. *Powelliphanta superba superba*. Permission: Manaaki Whenua Press. Meads 1990a, p. 79, Fig. 2.
19. *Powelliphanta traversi otakia*. Permission: Manaaki Whenua Press. Meads 1990a, p. 76, Fig. 1.
20. *Powelliphanta traversi traversi*. Permission: Manaaki Whenua Press. Meads 1990a, p. 76, Fig. 2.





## Plate 5: Snails & Scarab Beetles

1. *Placostylus bollonsi arbutus*. Permission: Harper Collins Publishers (NZ) Ltd. Powell 1979, Plate 67, Fig. 2.
2. *Placostylus bollonsi bollonsi*. Permission: Harper Collins Publishers (NZ) Ltd. Powell 1979, Plate 67, Fig. 1.
3. *Placostylus bollonsi caperatus*. Permission: Harper Collins Publishers (NZ) Ltd. Powell 1979, Plate 67, Fig. 3.
4. *Placostylus ambagiosus ambagiosus*. Permission: Harper Collins Publishers (NZ) Ltd. Powell 1979, Plate 67, Fig. 7.
5. *Placostylus ambagiosus annectens*. Permission: Harper Collins Publishers (NZ) Ltd. Powell 1979, Plate 67, Fig. 5.
6. *Placostylus ambagiosus lesleyae*. Photo: Greg Sherley.
7. *Placostylus ambagiosus whareana*. Permission: Harper Collins Publishers (NZ) Ltd. Powell 1979, Plate 67, Fig. 6.
8. *Placostylus bongii*. Permission: Harper Collins Publishers (NZ) Ltd. Powell 1979, Plate 67, Fig. 4.
9. *Rhytida greenwoodi stephenensis* dorsal. Photo: Andrew Townsend.
10. *Rhytida greenwoodi stephenensis* ventral. Photo: Andrew Townsend.
11. *Pericoptus frontalis*. Photo: Brian Patrick.
12. *Prodontria lewisii*. Permission: Manaaki Whenua Press. Meads 1990a, p. 41.
13. *Prodontria modesta* dark form. Photo: Brian Patrick.
14. *Prodontria modesta* bicoloured form (Specimen originally attributed to *Prodontria bicolorata*). Photo: Brian Patrick.
15. *Prodontria patricki*. Photo: Brian Patrick.
16. *Prodontria jenniferae*. Photo: Andrew Townsend.
17. *Prodontria matagouriae*. Photo: Andrew Townsend.
18. *Prodontria regalis*. Photo: Andrew Townsend.
19. *Prodontria setosa*. Permission: Manaaki Whenua Press. Given 1952, Plate 4, Fig. 12.
20. *Stethaspis convexa*. Photo: Andrew Townsend.