

Figure A3.1. LENZ Level IV environment threat categories within Level II environment.

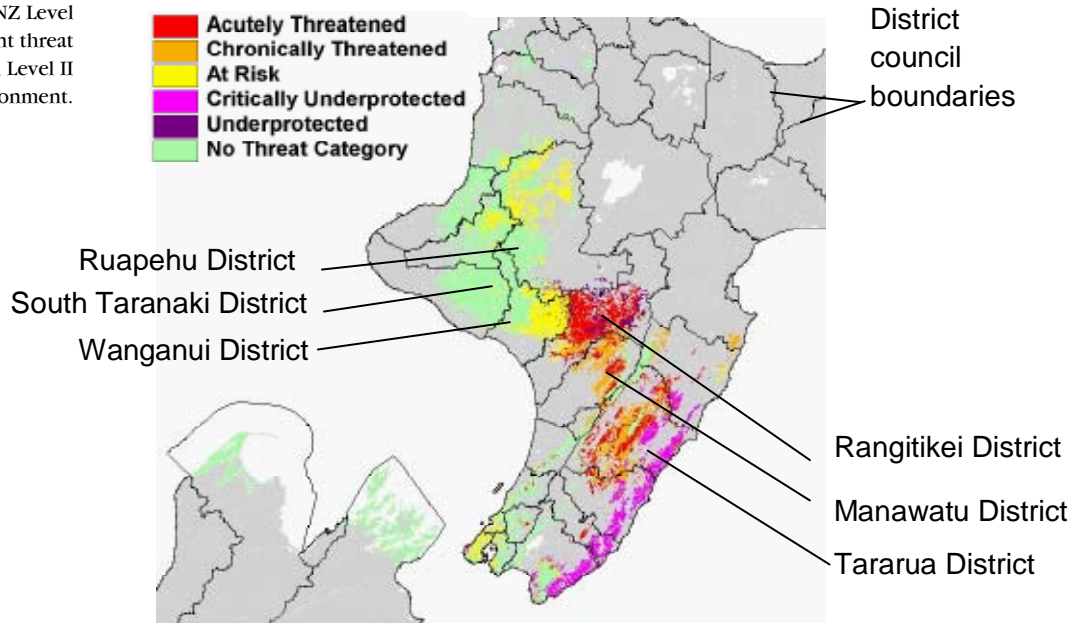


Figure A3.2. Potential forest types (from Leathwick et al. 2004) within Level II environment F1.

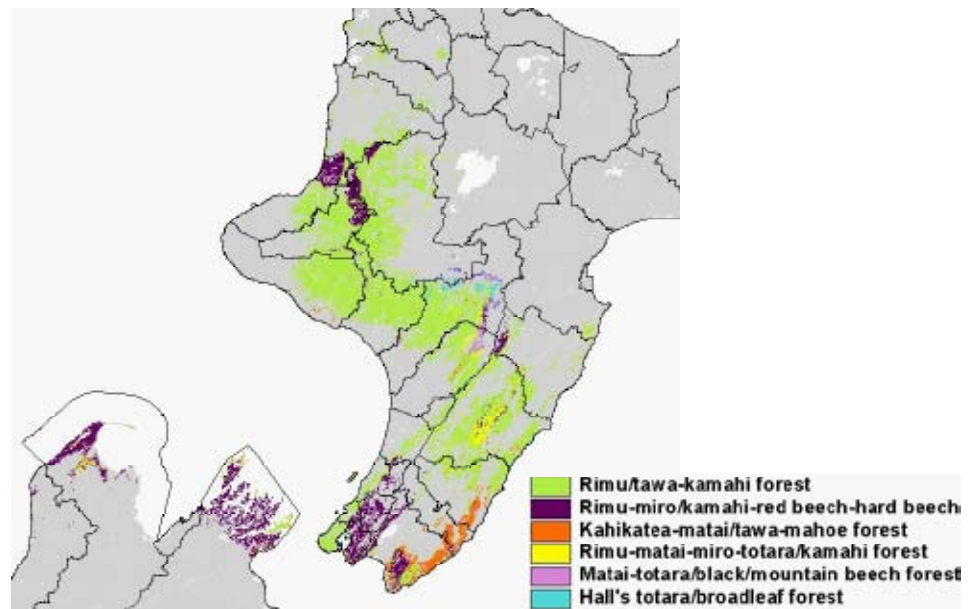


Figure A3.2. Present cover (LCBD 2 classes) within Level II environment F1.

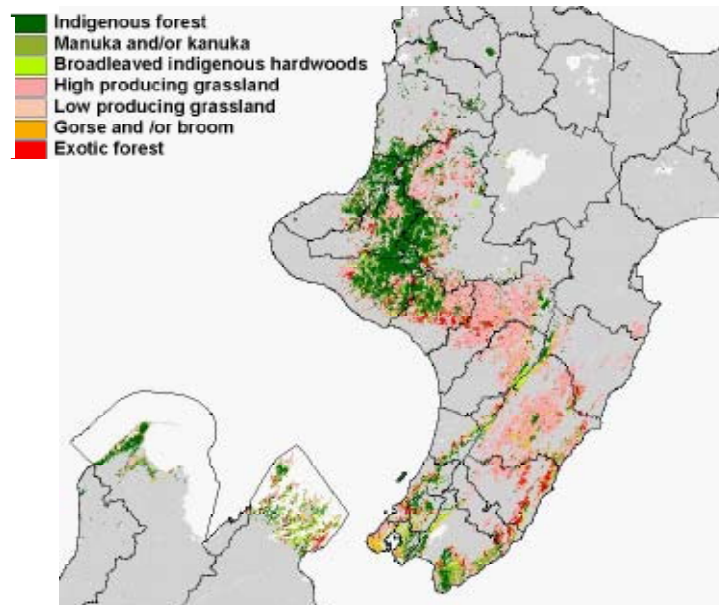


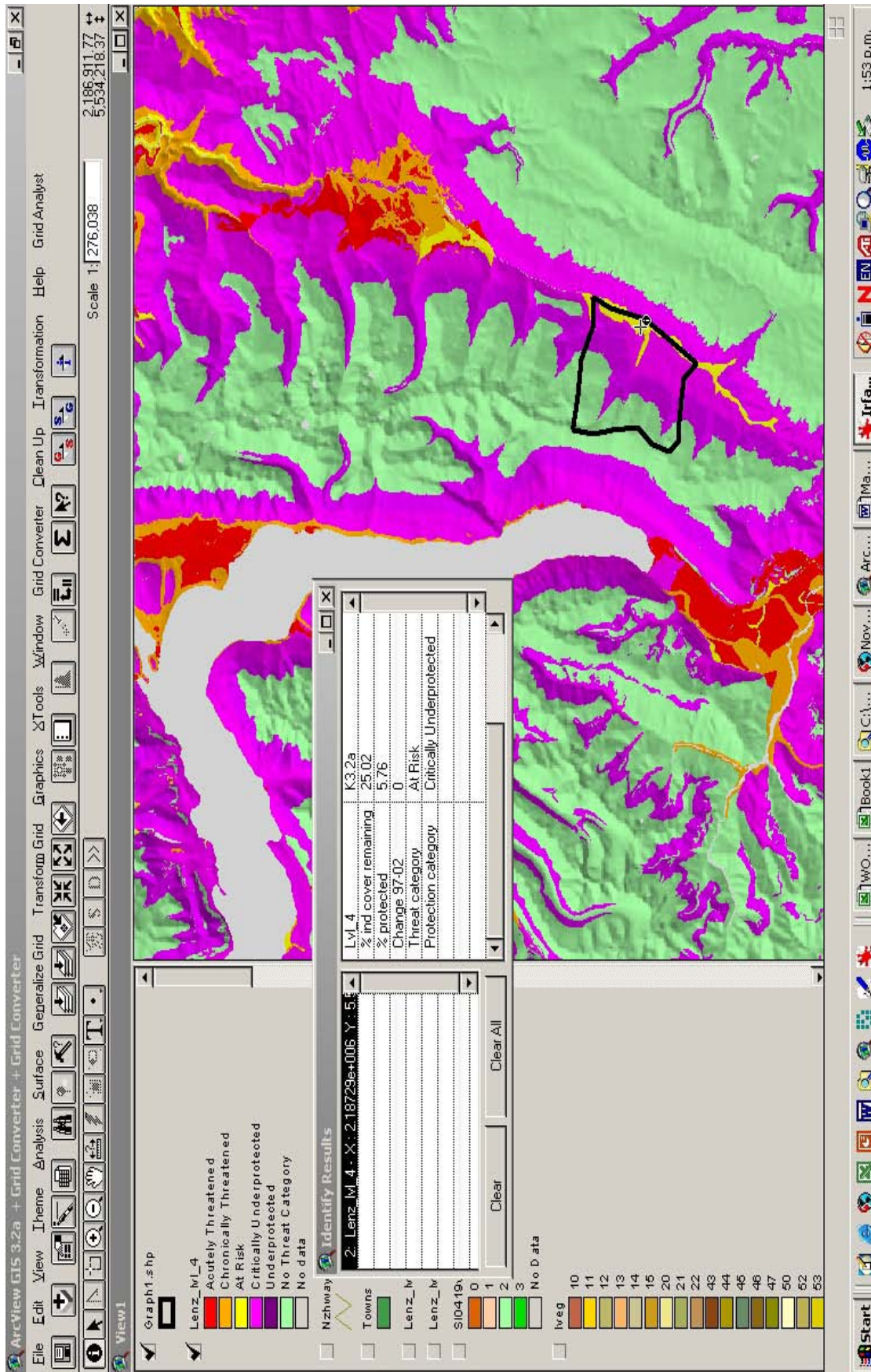
TABLE A3.1. DISTRIBUTION OF PERCENTAGE OF INDIGENOUS COVER, PERCENTAGE OF LEGALLY PROTECTED INDIGENOUS COVER, ENVIRONMENT THREAT CATEGORIES, POTENTIAL DOMINANT NATURAL VEGETATION, AND PRESENT LCDB 2 COVER CLASSES ACROSS THE 19 LEVEL IV ENVIRONMENTS WITHIN LEVEL II ENVIRONMENT F1.

LEVEL IV	THREAT STATISTICS AND CATEGORY				POTENTIAL NATURAL VEGETATION (6 MOST WIDESPREAD FOREST TYPES)						PRESENT LCDB 2 COVER CLASSES (5 MOST WIDESPREAD AMALGAMATED CATEGORIES)						ENVIRONMENTAL CHARACTERISTICS		
	TOTAL AREA (ha)	INDIGENOUS COVER (%)	LEGALLY PROTECTED (%)	THREAT CATEGORY (THREAT CLASSIFICATION AT LENZ LEVEL IV)	RIMU/TAWA-KAMAHI	RIMU-MIRO/KAMAHI-RED BEECH-HARD BEECH	KAHIKATEA-MATAI/TAWA-TOTARA	RIMU-MATAI-MIRO-TOTARA/KAMAHI	MATAI-TOTARA/BLACK/MOUNTAIN BEECH	HALL'S TOTARA/BROADLEAF	INDIGENOUS FOREST	SCRUB (MANUKA, KANUKA, BROADLEAVED INDIGENOUS HARDWOODS)	PASTURE (HIGH + LOW PRODUCING)	GORSE AND/OR BROOM EXOTIC FORESTRY	SLOPE (°)	MEAN ANNUAL TEMPERATURE (°C)	ANNUAL WATER DEFICIT (mm)	ACID SOLUBLE PHOSPHATE (1 = LOW, 5 = HIGH)	
F1.1a	50099	78.5	58.4	No Threat category	3	83	0	11	0	0	51	25	18	1	2	12.3	12.1	0.1	1.7
F1.1b	131322	70.0	31.9	No Threat category	77	23	0	0	0	0	57	12	26	1	3	17.5	12.7	1.3	1.7
F1.1c	118124	29.9	14.2	At Risk	90	6	0	3	0	0	25	5	64	0	5	13.8	12.1	2.4	2.9
F1.1d	411537	77.9	50.1	No Threat category	80	11	0	5	2	1	63	14	18	0	4	19.7	11.2	0.5	1.1
F1.1e	18012	16.8	5.0	Chronically Threatened	90	3	0	4	2	0	11	5	79	0	2	8.7	11.3	13.5	1.7
F1.1f	84281	9.0	2.4	Acutely Threatened	85	2	3	6	4	0	3	6	85	1	5	9.6	11.3	24.3	1.7
F1.1g	19451	4.5	1.4	Acutely Threatened	40	9	2	46	0	3	1	3	94	1	1	12.3	10.5	8.9	3.6
F1.2a	126850	67.7	30.4	No Threat category	22	69	6	0	1	0	23	43	16	3	12	22.6	11.6	14.8	2.4
F1.2b	16582	53.9	23.5	No Threat category	36	46	19	0	0	0	10	38	35	3	7	17.6	12.4	52.6	2.6
F1.2c	154454	31.3	3.1	Critically Underprotected	62	0	36	0	1	0	5	25	49	3	16	14.8	12.1	78.7	1.0
F1.2d	10225	68.6	5.0	Critically Underprotected	75	3	21	0	0	0	6	59	29	0	0	12.7	12.5	26.1	1.1
F1.3a	108210	22.9	4.2	At Risk	95	0	1	1	0	1	13	10	62	2	12	17.5	11.5	33.0	1.8
F1.3b	138464	68.0	20.2	No Threat category	97	0	2	0	0	0	43	24	21	1	9	19.6	12.2	18.4	1.0
F1.3c	36060	34.2	12.2	Underprotected	27	5	0	12	1	30	20	11	62	0	3	16.1	9.4	23.8	1.1
F1.3d	124070	10.0	2.1	Acutely Threatened	89	1	1	1	2	4	5	4	83	0	6	13.6	10.8	52.1	1.8
F1.4a	112505	12.0	2.2	Chronically Threatened	89	1	4	4	2	0	3	9	79	1	6	10.0	11.4	39.5	1.1
F1.4b	26695	27.3	4.5	At Risk	74	24	2	0	0	0	6	21	34	18	9	13.9	12.2	42.4	1.0
F1.4c	110676	60.7	27.2	No Threat category	39	53	2	2	2	0	32	28	21	7	10	19.3	11.1	6.4	1.0
F1.4d	34965	16.8	4.3	Chronically Threatened	62	9	1	25	2	0	5	12	77	3	3	15.2	11.1	18.1	2.0
F1 total	1832582	48.4	22.9	No Threat category	72	16	5	4	1	1	31	17	42	2	7	13.6	11.5	20.6	1.5

Appendix 4

EXAMPLE OF AN INTERACTIVE GIS APPLICATION OF THE THREAT CLASSIFICATION TABLE

This example assesses the threat status of remaining indigenous cover within an area of interest (bold black outline) and statistics for the yellow area are displayed by clicking the crosshair pointer. This area is in environment K3.2a, and in the At Risk threat category. The environment has 25.02% indigenous cover remaining, and 5.76% protected. No change in indigenous cover was recorded in this environment from 1996/97 to 2001/02. The inset box shows the five-column table of data joined to the LENZ Level IV attribute table.



What protection does our native vegetation need?

Land clearance and loss of indigenous cover and biodiversity continue across New Zealand. We define five categories of environments containing indigenous biodiversity that are at most risk of loss from land clearance. Highest rates of loss are occurring in the most threatened environments, where little cover remains. Moreover, these ecosystems support a disproportionately large proportion of New Zealand's most threatened species and habitats. We recommend that the Land Environments of New Zealand database (LENZ) be used to identify environments that are most vulnerable to loss.

Walker, S.; Price, R.; Rutledge, D. 2008: New Zealand's remaining indigenous cover: recent changes and biodiversity protection needs. *Science for Conservation* 2##. 82 p.