

4.2 KEY NATIONAL STORIES IN NELSON/ MARLBOROUGH CONSERVANCY

The three main goldrushes in Nelson were Aorere in 1857, the Buller, 1861 and Wakamarina 1864 (Table 2) and each were responsible for the establishment of towns—Collingwood, Westport and Canvastown.

The 1856 goldrush was on Māori land and James Mackay, who had been brought up near the Māori settlement at Wakapuaka near Nelson developed administrative systems that were later used at Thames and Coromandel. Nelson was also the site of a series of murders by goldfield thieves—‘the Maungatapu Murderers’ although this crime story could be effectively told at various Nelson sites ranging from Canvastown, Maungatapu Rock, to Albion Square.

TABLE 2. NELSON/MARLBOROUGH CONSERVANCY (FIRST ALLUVIAL RUSH 1856 AT AORERE).

HISTORIC THEMES	SUB-THEMES	STORIES THAT DEMONSTRATE THE THEMES	SIGNIFICANCE OF STORY AT NELSON/MARLBOROUGH SITES
2.4 Migrating	2.4.1 Migrating to save or preserve a way of life	Regional migration 1856, Buller 1861 and national migration and Wakamarina 1864.	Moderate national
	2.4.2 Migrating to seek opportunity	Story of Wakamarina.	Moderate national
	2.4.5 Changing the face of rural and urban New Zealand through migration	Establishment of Westport, Collingwood, Canvastown and the Lyell. Less overall impact on the province.	High national
3.3 Surveying the land	3.3.3 Prospecting for precious metals	Some exploration for gold opened up land particularly in the Buller but there was considerable exploration prior to the Goldrushes (e.g. Heaphy and Rochfort).	Moderate regional
3.4 Utilising national resources	3.4.3 Mining	Goldmining was probably not the key in the development of Nelson/Marlborough but for a period it was significant.	Moderate regional
3.7 Establishing communications	3.7.3 Establishing postal service	Specific services to the goldfields, particularly via shipping.	Moderate regional
3.11 Altering the environment	3.11.1 Regulating waterways	The scale of alteration was probably less than in Otago and/or the West Coast.	Moderate regional
3.15 Developing economic links outside New Zealand		Few stories, possibly less significant here.	Low national
3.18 Financing New Zealand		Few stories, possibly less significant here.	Low national
4.5 Making settlements to serve rural New Zealand		Collingwood, Wakamarina, Lyell, etc., although more towns as a consequence of systematic colonisation.	Moderate regional
5.1 Working in harsh conditions	5.1.2 Coping with dangerous jobs and workplaces	Good stories of individuals, e.g. Waite(?), Kynnersley and miners, Biddy of the Buller, etc.	Moderate regional/local

(continued next page)

THEMES	SUB-THEMES	STORIES THAT DEMONSTRATE THE THEMES	SIGNIFICANCE
5.6 Working in the home		Limited available evidence.	Moderate regional/local
7.6 Administering New Zealand	7.6.3 Policing 7.6.4 Dispensing justice 7.6.6 Providing services and welfare	James Mackay at Aorere. Maungatapu murderers(?), although this story could be told in numerous places—possibly Albion Square. Possibly less a feature of Nelson/Marlborough. Was a feature of Wakamarina, May/June 1864. Few settled, to need pensions.	High national High national Moderate regional
7.8 Establishing a regional and local identity			Moderate regional
9.5 Living outside a family partnership		Could be undertaken using individuals.	Moderate regional

Goldfield archaeological sites in Nelson/Marlborough identified in Regional Archaeological Statement

AREA	SITE NUMBER [*]
Taitapu Area South of Whanganui inlet	M23/80-86
Aorere and Parapara goldfields	M25/46-70, 72-78; M26/3-6
Kaituna goldfield	M25/71
Parts of Anatoki including Pupu	M26/1,2
The Anatoki River	M26/7-14
The Mount Arthur Tableland	M27/4-8, 11-16, 21
Roaring Lion	M27/9
Leslie and Arthur Rivers	M27/1 and 10
Motueka River tributaries particularly the Rolling River	M28/1-26, 33
Wangapeka River	M27/3
Baton River	M27/2,17-19, ; N27/151
The Buller River	M29/6
The Owen River	M28/34,35; M29/2
Lyell Creek	L27/2-4, 16
Howard River	M29/7
Matakitaki River	M29/3-5, M30/5
Glenroy River	M30/8,9
Burn Creek	M30/10
Granity Creek	M30/11
Doughboy Creek	L29/19, 20
North Bank of the Wairau	O28/3, 5-28, 38-39, 40-66; P27/119-126; P28/53-54
Whakamarina Field	O28/29-36

^{*} Archaeological site numbers from Challis (1991: p. 46 and fig. 13 for overview map).

DOC Nelson/Marlborough VAMS goldfields sites

VAMS SITE NO.	NAME	TYPE OF VISITOR ACCESS	PRIMARILY QUARTZ OR ALLUVIAL
1000118	Johnston United Battery	Day visitors	Quartz
1000343	Louis Creek goldfield route	Back-country	Alluvial
1000346	New Creek information site and gold fossicking	Back-country	Alluvial
1000211	Blue Creek/Nuggety Creek walks	Day visitors	Alluvial
1000615	Antimony Mine track (antimony)	Day visitors	Quartz
1008001	Wakamarina track and roads	Day visitors	Alluvial
1000828	Wellington Battery, Top Valley	Day visitors	Quartz
1000829	Jubilee Mine site	Day visitors	Quartz

Key associated sites and groups in Nelson/Marlborough

The Nelson Provincial Museum

Golden Bay Museum

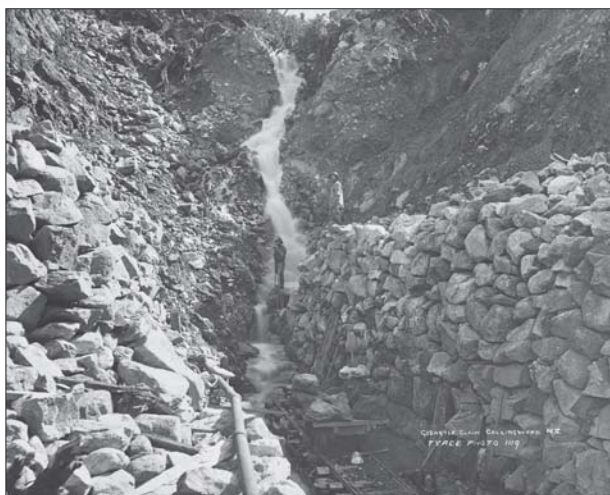
Marlborough Provincial Museum and Archives

Picton Museum and Historical Society

NZ Historic Places Trust registered sites

There are no goldfield sites registered by the NZ Historic Places Trust in Nelson or Marlborough

Nelson/Marlborough images



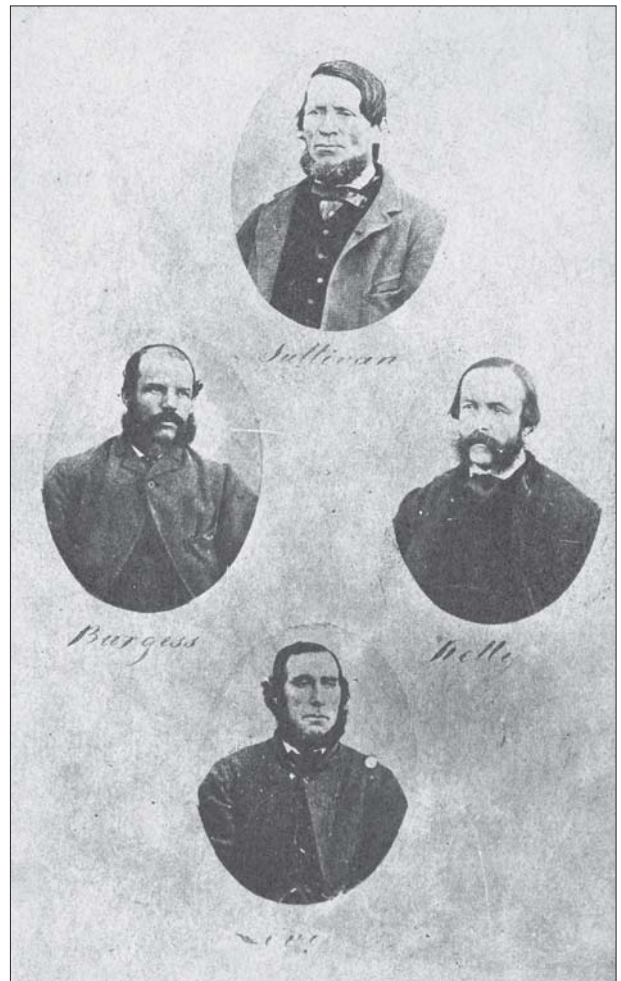
The Glengyle Dam, Collingwood. Photo by Tyre Brothers, Nelson. Reproduced by permission of the Alexander Turnbull Library, Wellington, N.Z. Ref. no. G-530-10x8.



Quartz crushing plant at Hibernia Claim, Mahakipawa. Photo by Tyre Brothers, Nelson. Reproduced by permission of the Alexander Turnbull Library, Wellington, N.Z. Ref. no. G-550-10x8.



Parapara Sluicing Co. staff, 1890s. Photo by Tyre Brothers, Nelson. Reproduced by permission of the Alexander Turnbull Library, Wellington, N.Z. Ref. no. G-528-10x8.



The 'Maungatapu murderers', Thomas Kelly, Joseph Thomas Sullivan, Philip Levy, and Richard Burgess. They were possibly involved in the murder of Henry J. Taperell, a Grey River storekeeper. Reproduced by permission of the Alexander Turnbull Library, Wellington, N.Z. Ref. no. F-100122-1/2.

Continue to next file: SFC262b.pdf