

Appendix B

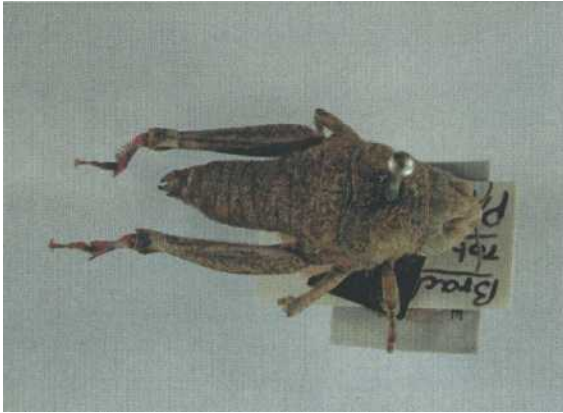


Figure 1. *Brachaspis robustus* Bigelow



Figure 2. *Aphis healyi* Cottier
Crop & Food Research, Lincoln



Figure 3. *Aphis cotteri* Carver
Crop & Food Research, Lincoln



Figure 4. *Mecodema allani* Fairburn

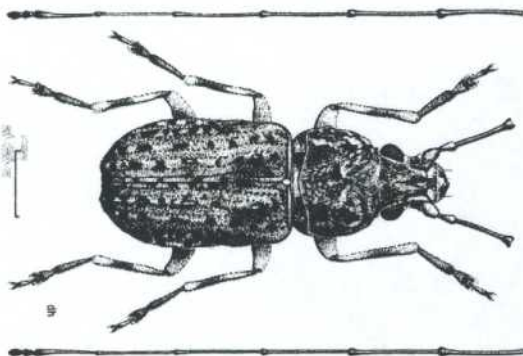


Figure 5. *Androporus discedens* Sharp
Illustrator Des Helmore, Landcare
Research



Figure 6. *Mecodema brittoni* Townsend

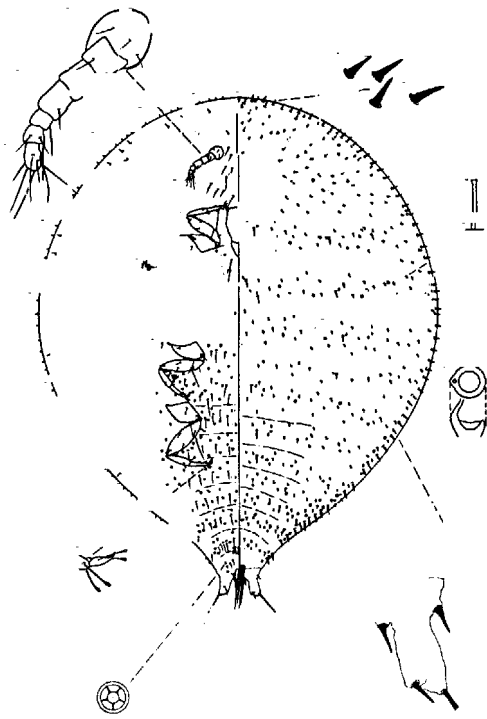


Figure 7. *Eriococcus detectus* Hoy, left half ventral view, right half dorsal view, Hoy (1962)

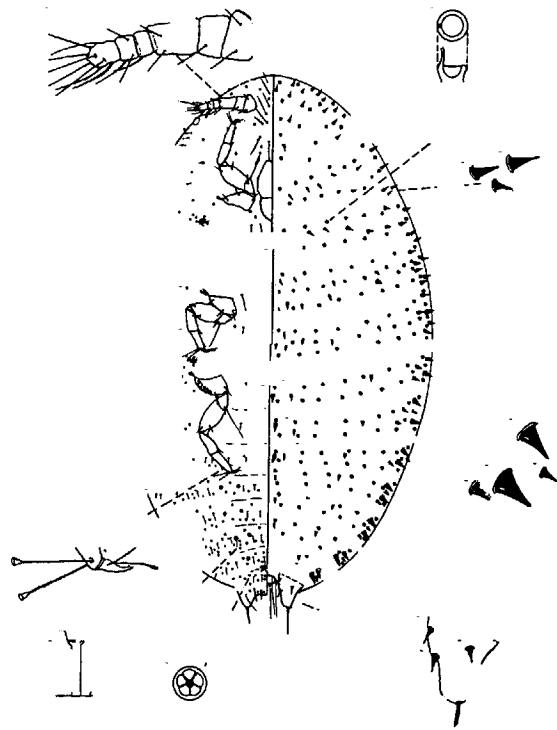


Figure 8. *Eriococcus kowhai* Hoy, left half ventral view, right half dorsal view, Hoy (1962)

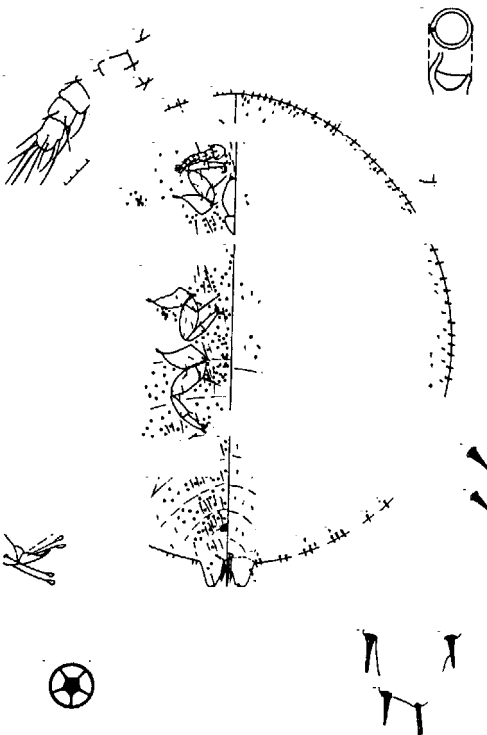


Figure 9. *Eriococcus montifagi* Hoy, left half ventral view, right half dorsal view, Hoy (1962)

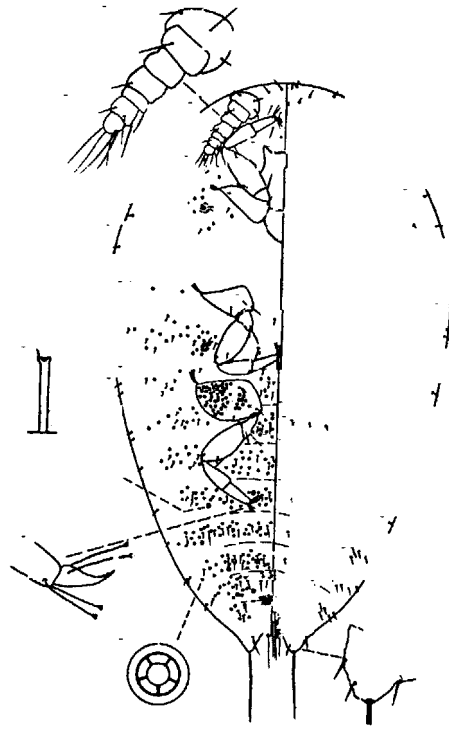


Figure 10. *Stegococcus oleariae* Hoy, left half ventral view, right half dorsal view, Hoy (1962)

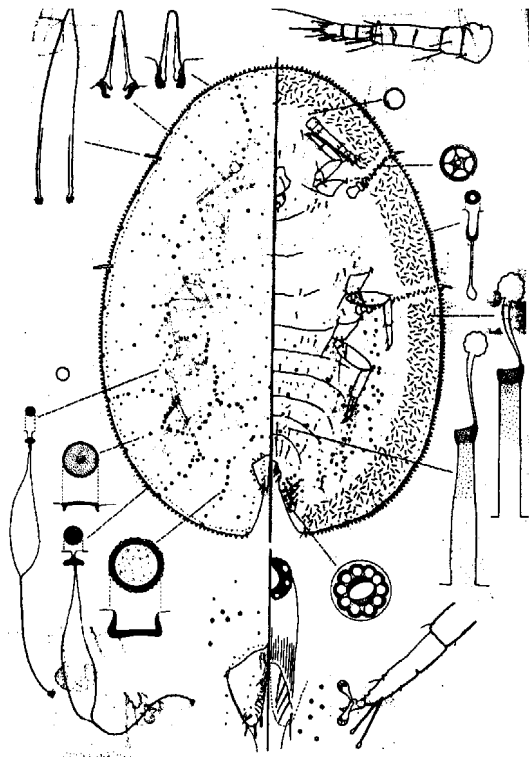


Figure 11. *Plumichiton punctatus* Henderson & Hodgson, left half dorsal view, right half ventral view, illustrator C.J. Hodgson, from Hodgson & Henderson (2000)

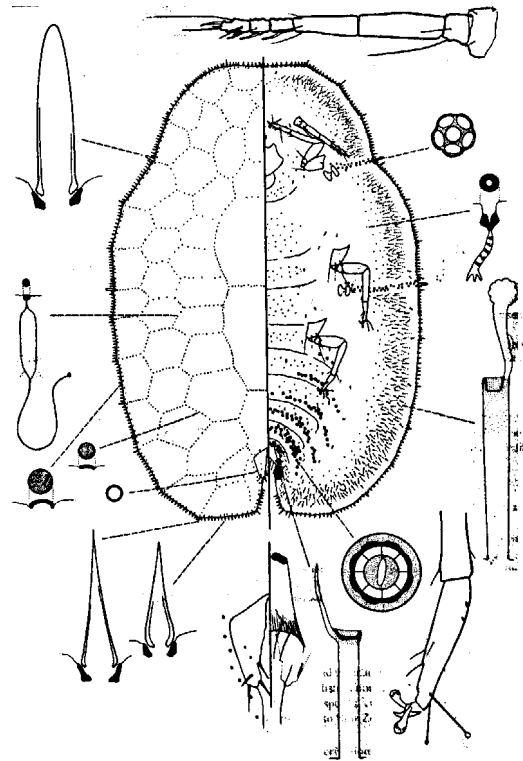


Figure 12. *Kalasiris paradepressa* Henderson & Hodgson, left half dorsal view, right half ventral view, illustrator C.J. Hodgson, from Hodgson & Henderson (2000)

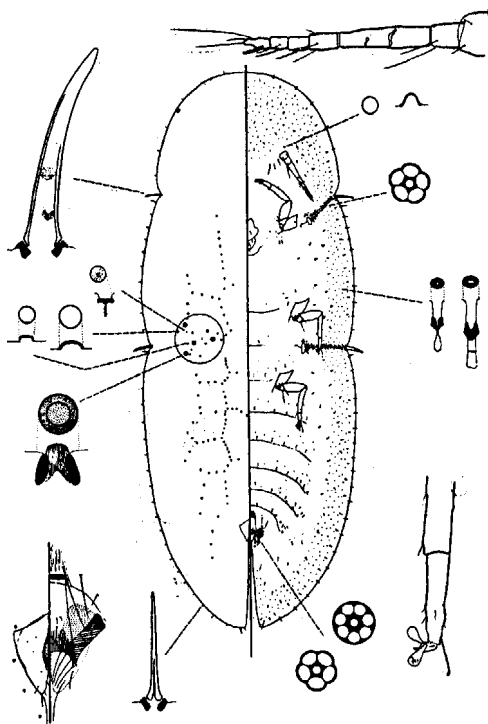


Figure 13. *Aphenochiton chionochloae* Henderson & Hodgson, left half dorsal view, right half ventral view, illustrator C.J. Hodgson, from Hodgson & Henderson (2000)

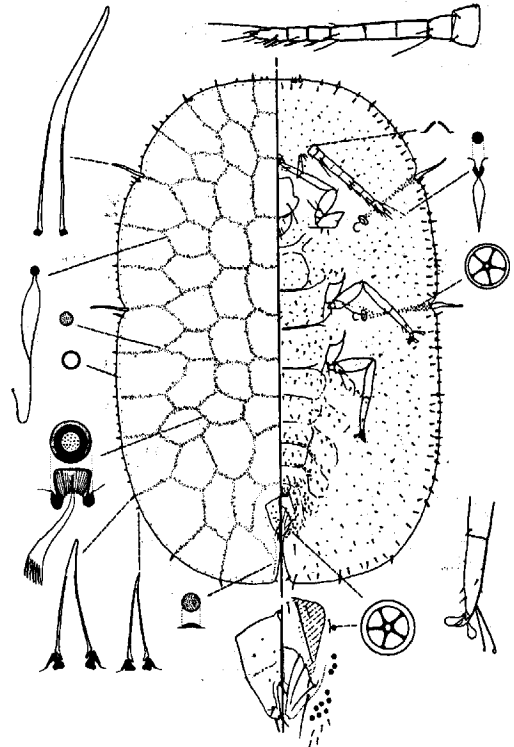


Figure 14. *Aphenochiton inconspicuus* (Maskell), Henderson & Hodgson, left half dorsal view, right half ventral view, illustrator C.J. Hodgson, from Hodgson & Henderson (2000)



Figure 15. *Hadramphus turberculatus* Pascoe



Figure 16. *Lyperobius carinatus* Broun



Figure 17. *Lyperobius huttoni* Pascoe



Figure 18. *Odontria subnitida* Given



Figure 19. *Zeadelium gratiosum* (Brown)



Figure 20. *Anabarhynchus simplex* Lyneborg