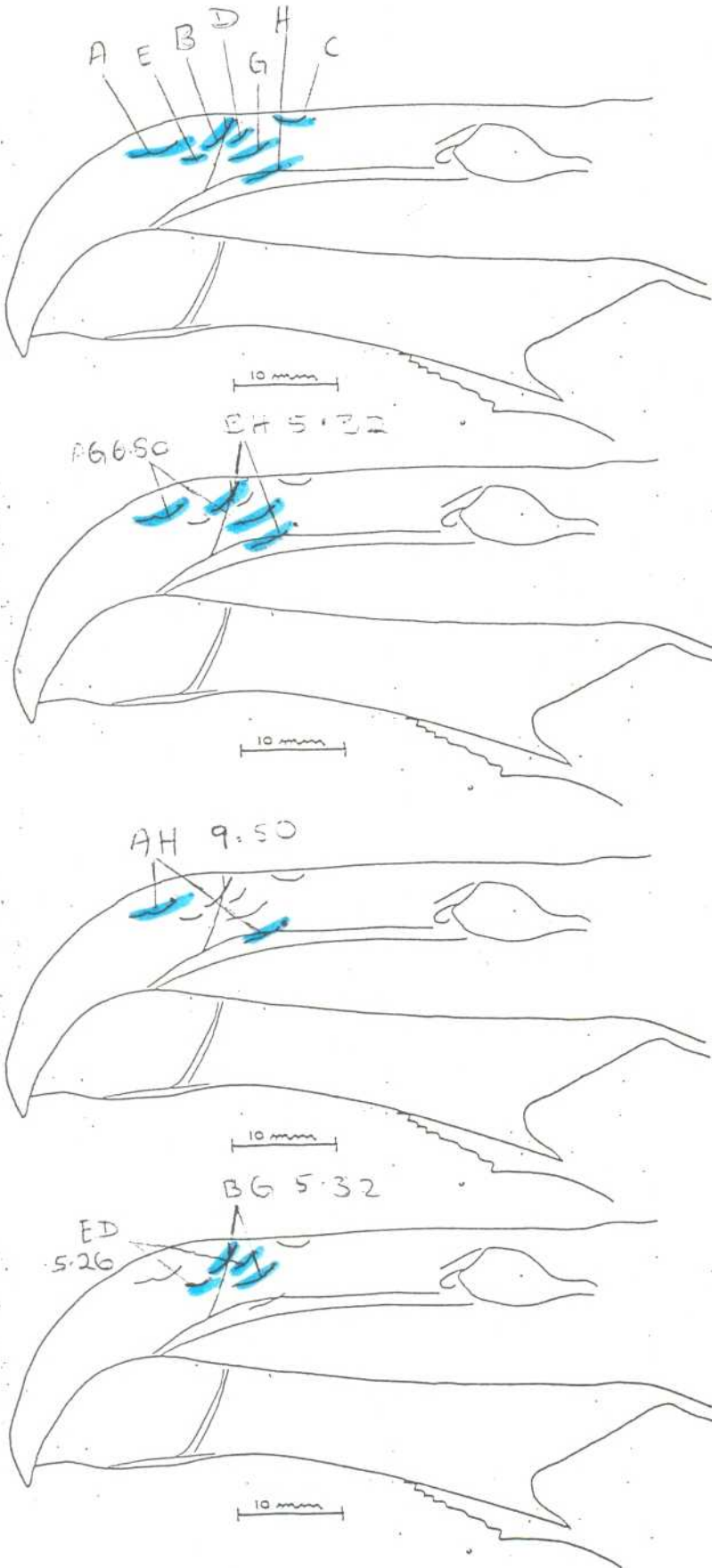


CHICK 4

LEFT SIDE OF THE BILL



AG 6.80 => stoat
BH 5.32 => stoat

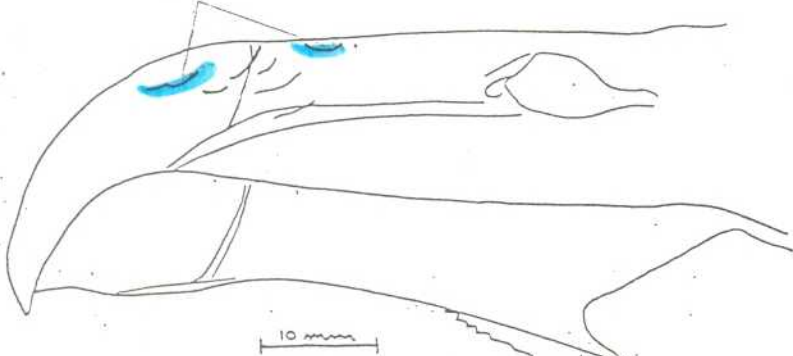
AH 9.50 => ferret

EI 6.26 => stoat
BG 5.32 => stoat

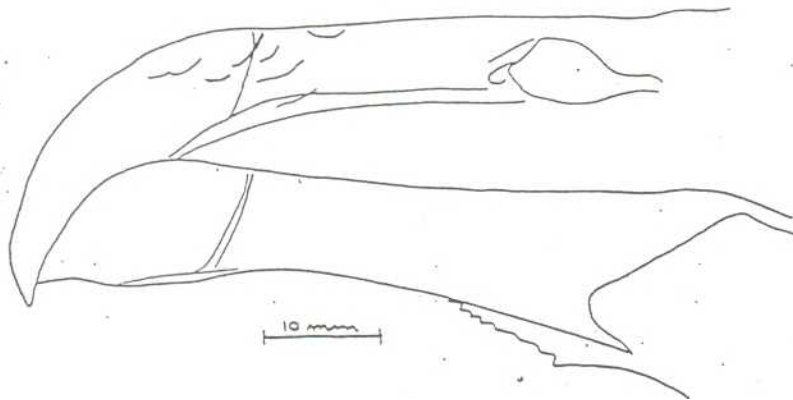
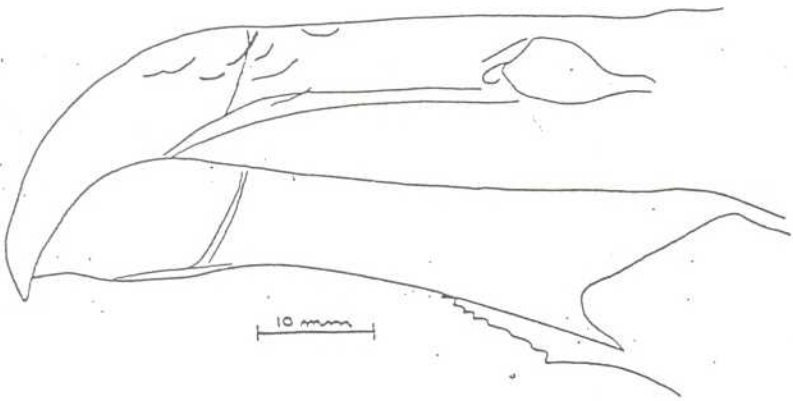
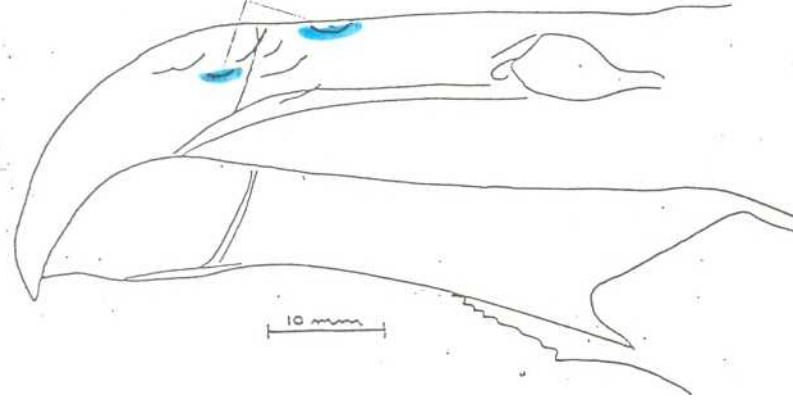
CHICK 4

LEFT SIDE OF THE BILL (2)

AC 11.81



EC 9.04

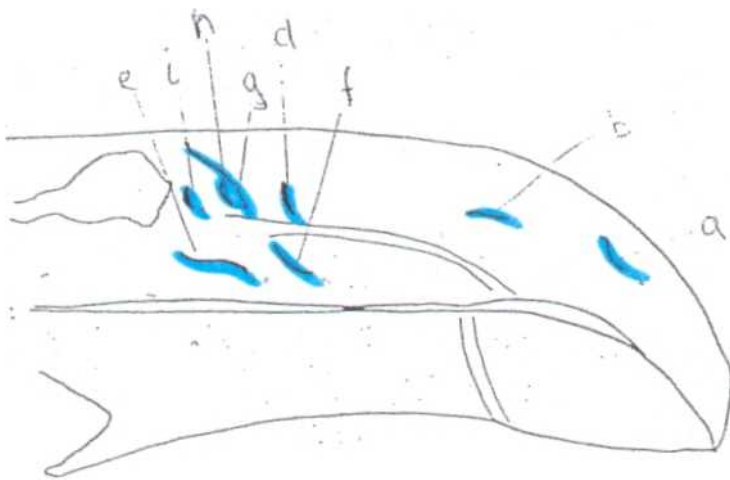


AC 11.81 => perfect

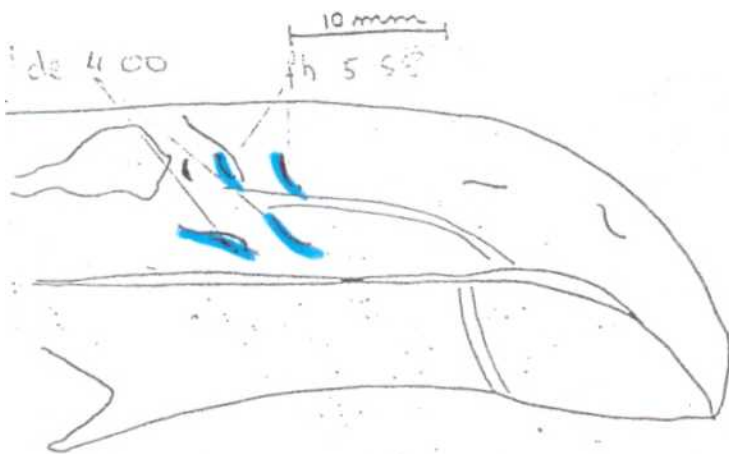
EC 9.04 => perfect

CHICK 3

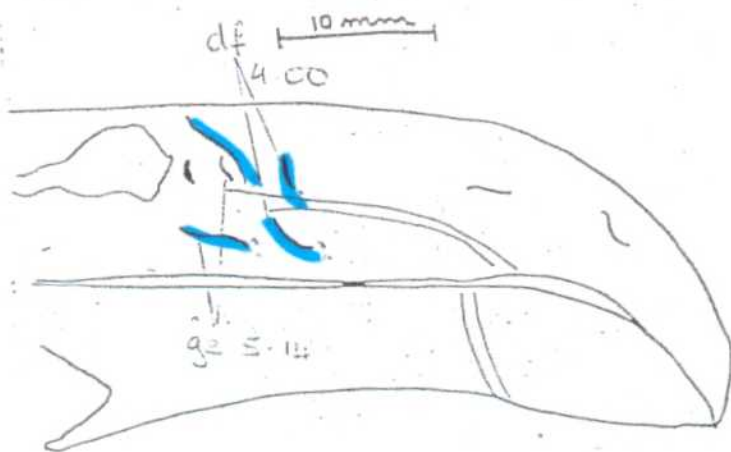
RIGHT SIDE OF THE BILL



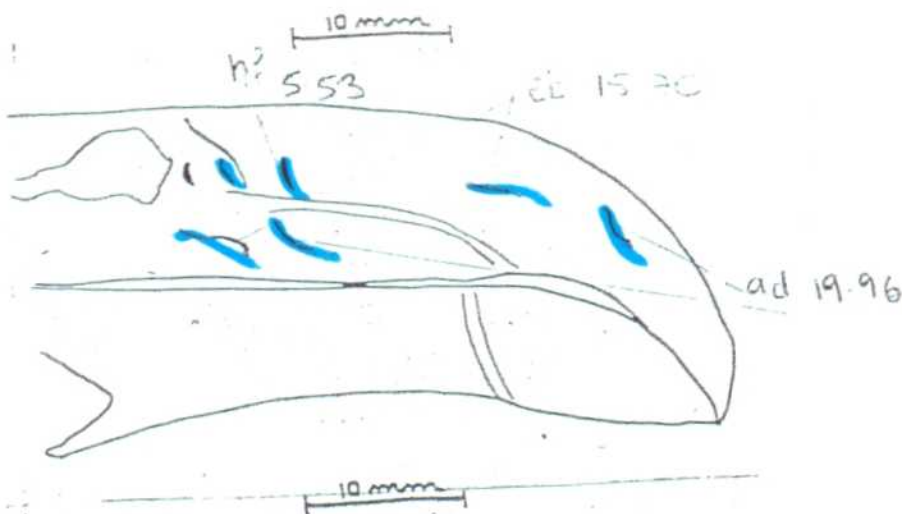
de 4.00 => st cat
 fh 5.58 => st cat



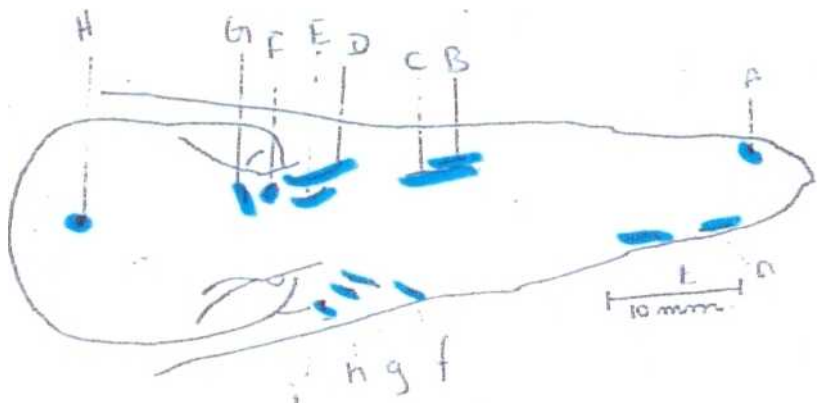
de 4.00 => st cat
 ge 5.14 => st cat



hf 5.58 => st cat
 eb 15.70 => cat
 ad 19.96 => cat



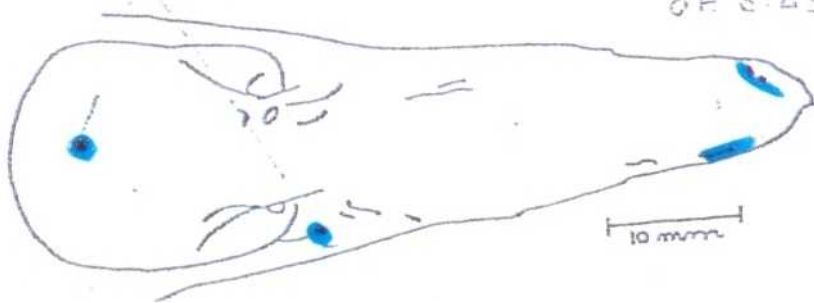
CHICK 3 TOP VIEW OF THE BILL FOR 'CROSS-OVER' ANALYSIS



if 15.02

of 6.43

if 15.02 => cat
of 6.43 => stoat



if 6.85

if 6.85 => stoat

