

APPENDIX I

Broun, T. 1904

VIII. Descriptions of new genera and species of New Zealand
Coleoptera.

Annals and Magazine of Natural History Series 7 Vol. 14 pp. 41-2

Group Cnemacanthidæ.

Mecodema læviceps, sp. n.

Robust, nigrescent, slightly shining; labrum, palpi, antennæ, and femora pitchy red, tibiæ and tarsi rufo-piceous.

Head broad, incurved behind the moderately prominent eyes, almost smooth, having only a few feeble rugæ near the eyes; on the epistome there are two long and three short striæ; labrum rounded, slightly emarginate in the middle, with six setigerous punctures. *Antennæ* with the basal four joints glabrous, the remainder are finely punctate, and gradually become more pubescent towards the extremity, the fifth, however, is nearly nude. *Thorax* $3\frac{1}{4}$ lines in length by $3\frac{3}{4}$ in breadth, apex slightly incurved, base medially emarginate; its sides are only indistinctly crenate and are nearly straight for two-thirds of their length, they are sinuously narrowed backwards towards the obtuse posterior angles; the lateral margins are distinctly explanate near the anterior angles, and less so near the basal fossæ; these last are of moderate size, but appear flattened close to the cariniform margins; the discoidal furrow does not attain the front or base, and is marked with seven or eight punctures, the largest of these is in front; near each side there are some faint striolæ, and along the base there are some short shallow ones. *Elytra* oblong-oval, each with eight well-marked punctate dorsal striæ, which become irregular behind, the punctures, especially towards the sides, are distinct and close; the three interstices nearest the suture are broad and plane, the others become narrower, so that the eighth is almost cariniform, the marginal punctuation is irregular. *Legs* moderately slender, anterior tibiæ with produced outer angles and stout inner spurs.

Underside shining, rufo-piceous, nearly smooth; on each segment, near the middle, there are two setigerous punctures and a large impression at each side, the terminal, in addition thereto, has four punctures at its extremity.

This species is, no doubt, nearly allied to *M. lucidum*, Castelnau, but the postocular punctuation is absent; it is, moreover, a broader insect. The elytra near the base are much broader: in my specimen of *M. lucidum* they are so narrowed that the shoulders become quite obsolete. The external angle of the front tibia is almost obtuse.

Length 13, breadth 4 lines.

Ida Valley.

One individual from Mr. J. H. Lewis.

APPENDIX II

Britton, E.B. 1949

Transactions of the Royal Society of New Zealand 77: 533-581.

Reproduced are:

- (1) the description (p. 564),
- (2) Plate 60 Fig. 9 showing the head, pronotum and shoulders of elytra, and
- (3) Plate 73 Fig. 105, a photograph of a pinned specimen.

35. *Mecodema laeviceps*^s Broun 1904, A., (7), XIV, p. 41.

Figs. 9, 105. *Length*: 27.0–28.5 mm. *Head*: smooth, unpunctured; with 3 very faint wrinkles on each side; transverse depression of the vertex broad and very shallow. *Pronotum*: rather straight sided in the anterior half (Fig. 9), slightly sinuate behind, posterior angles blunt and obtuse; disc with very faint transverse wrinkles which are more deeply impressed at the sides. *Elytra*: intervals 1–5 moderately convex, intervals 6, 7 and 8 strongly convex; interval 9 strongly convex in the apical half; intervals with faint transverse unbranched strigae originating from the striae and extending to the middle of the interval. *Ventral surface*: smooth, unpunctured. *Legs*: posterior femora with 3 setiferous punctures on the posterior face instead of the usual one. *Microsculpture*: strong, isodiametric in the lateral channels of the pronotum and elytra, and in the elytral striae, spreading to cover the intervals in the posterior half.

SOUTH ISLAND. *Otago*: Ida Valley, holotype ♀ and 1 ♀ ex.; Mount Teviot, 19.xi.44 (R. R. Ford), 1 ex.

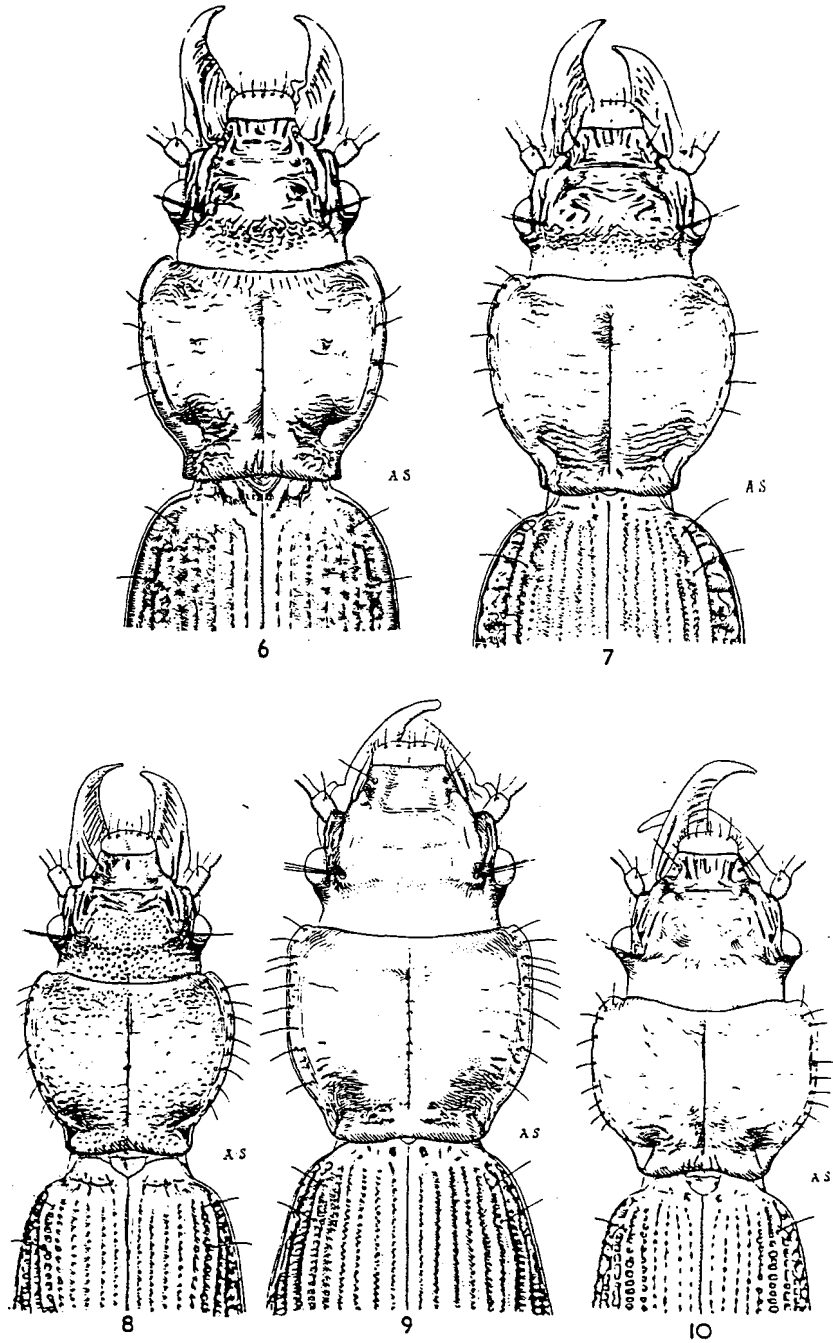


FIG. 6—*Mecodema laterale* Broun. FIG. 7—*Mecodema validum* Broun.
 FIG. 8—*Mecodema impressum* Castelnau. FIG. 9—*Mecodema laeviceps* Broun.
 FIG. 10—*Mecodema gourlayi* sp.n.



FIG. 102—*Mecodema politanum* Broun

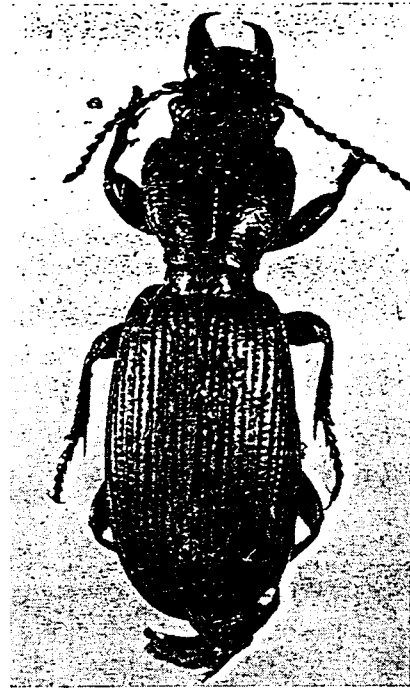


FIG. 103—*Mecodema impressum* Cast.



FIG. 104—*Mecodema gourlayi* sp.n.



FIG. 105—*Mecodema laeviceps* Broun