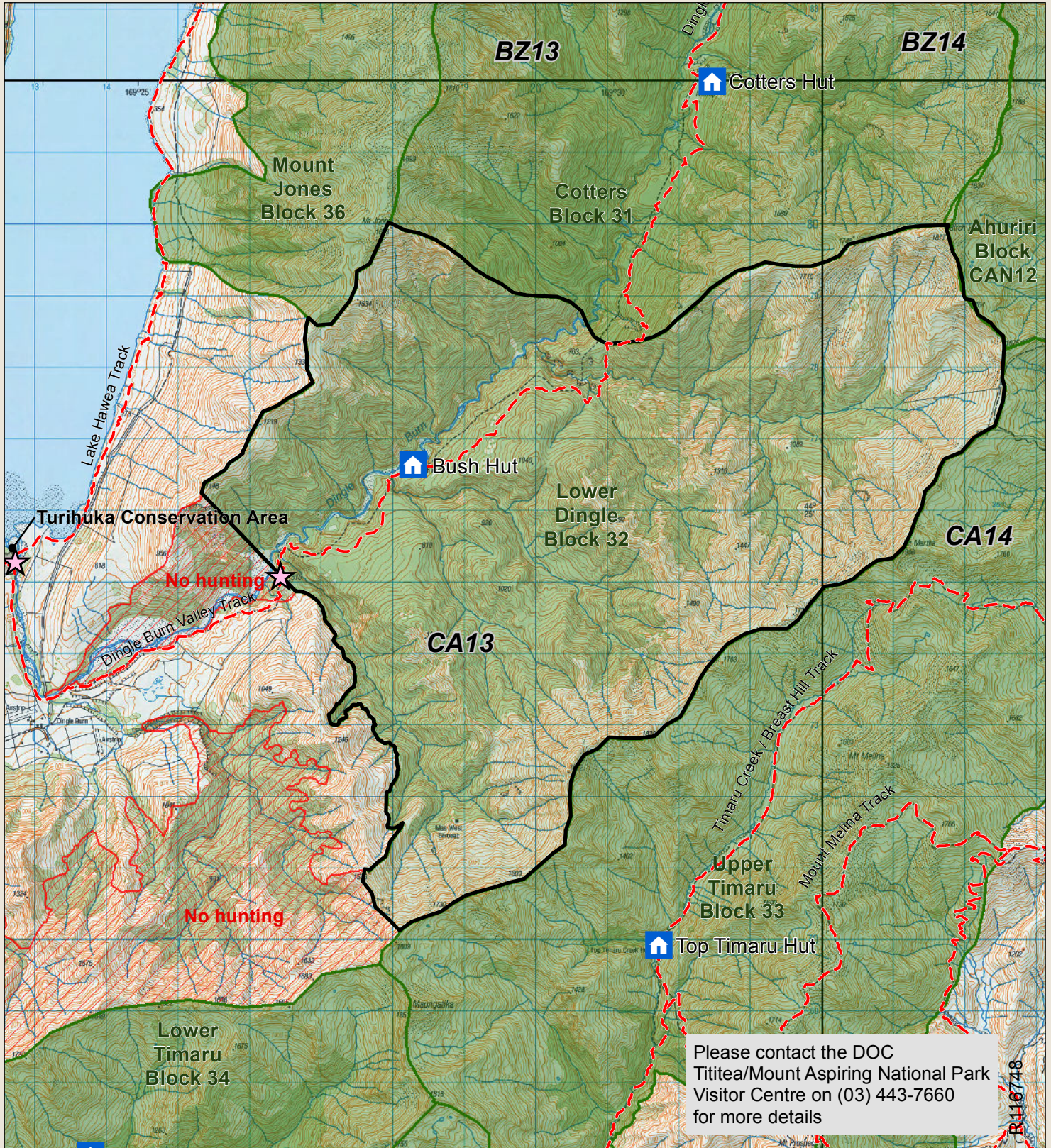




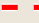

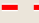



# Hāwea Conservation Park hunting areas

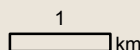


Check your permit and the DOC website for conditions that may apply to this area: [www.doc.govt.nz/hunting](http://www.doc.govt.nz/hunting)



This map is a guide only and should not be used for navigational purposes. We recommend NZTopo50 series map(s)

-  Boundary of this hunting block
-  Hunting is permitted
-  DOC tracks - dog or firearm conditions may apply
-  Hunting is prohibited
-  Tracks
-  DOC Hut
-  Access point - described on DOC website
-  Topo50 Sheetlines



\* No dogs except via helicopter or Ahuriri hunting block entry - Top Dingle Burn.  
\* Balloted ROAR block from mid march to end April annually.