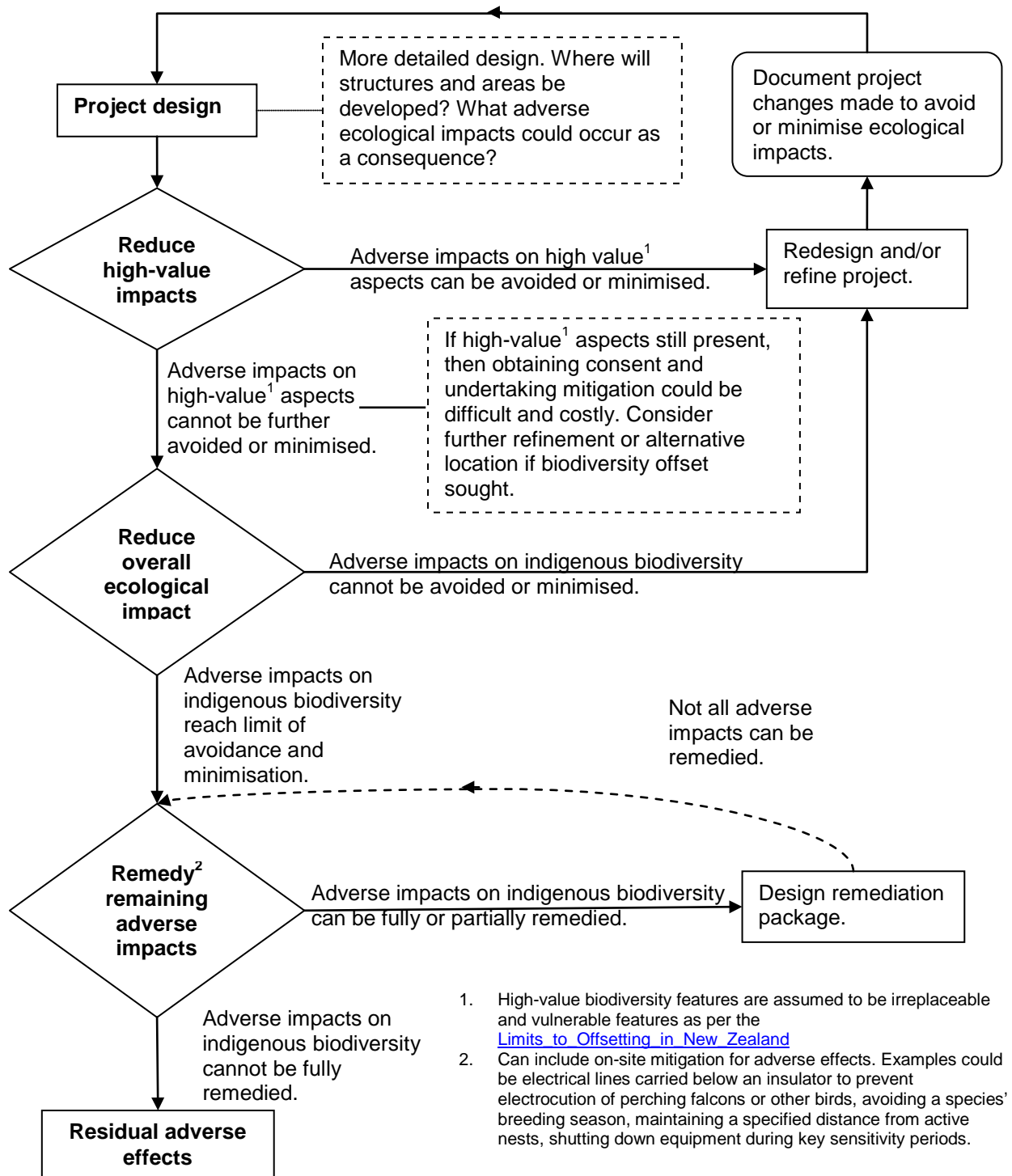


## Refine development/project design

Field work will likely be required to provide more detail. It is possible that irreplaceable and vulnerable values could be discovered. In that case, undertake a more detailed site assessment.



1. High-value biodiversity features are assumed to be irreplaceable and vulnerable features as per the [Limits to Offsetting in New Zealand](#)
2. Can include on-site mitigation for adverse effects. Examples could be electrical lines carried below an insulator to prevent electrocution of perching falcons or other birds, avoiding a species' breeding season, maintaining a specified distance from active nests, shutting down equipment during key sensitivity periods.