

# Conservation volunteer activities

Southland, Fiordland and Otago  
2023-2024



Department of  
Conservation  
*Te Papa Atawhai*

# Contents

Introduction.....	4
What to expect .....	4
What to bring.....	5
Registration .....	5
Working with DOC.....	6
Southland, Fiordland and Otago map.....	8
Southland, Fiordland and Otago conservation volunteer activities .....	9
1. Stewart Island/Rakiura – annual hut maintenance.....	10
2. Stewart Island/Rakiura – Mason Bay dune restoration .....	11
3. Milford Track – Dumpling Hut and track maintenance.....	12
4. Sandfly Bay – wildlife viewing ranger .....	13
5. Piano Flat – historic water race restoration .....	14
6. Moturau Moana – historic native garden maintenance .....	15
7. Stewart Island/Rakiura – hut rangers .....	16
8. Mavora Lakes Hut and facility maintenance .....	18
9. Golden Point historic site maintenance .....	19
10. Nugget Point Lighthouse Reserve – summer rangers .....	20
11. Ulva Island – summer rangers.....	22
12. Hollyford valley – track and hut maintenance .....	24
13. Southland – backcountry track maintenance.....	26
14. Milford Road – historic maintenance .....	27
15. Southland – preservation of historic relics .....	29
16. Papatowai Campsite – maintenance .....	30
17. Skippers Point School – maintenance .....	31
18. Fiordland – lakeside hut maintenance .....	32
19. Port Pegasus/Pikihati – historic tin-mining site maintenance... 33	
20. Burwood Takahē Centre .....	34
21. Stewart Island/Rakiura – Raroa historic house and garden maintenance .....	36
22. Port Craig Hut and South Coast Track – maintenance .....	38

## Other volunteer opportunities..... 39

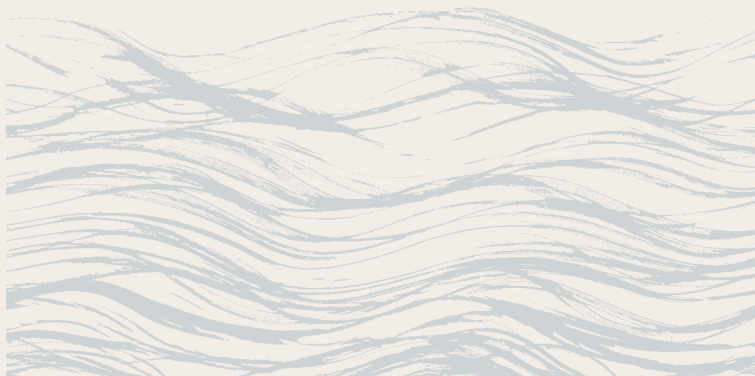
Bluff Hill Motupōhue Environment Trust .....	40
Coal Island Te Puka Hereka .....	41
Coastal Otago.....	42
Hollyford Conservation Trust – Te Roopu Manaaki o Whakatipu Waitai .....	43
Lower Clutha planting days .....	44
Mamaku Point Conservation Trust.....	45
Omaui Landcare Charitable Trust.....	46
Orokonui Living Legends .....	47
Otatara Landcare Group.....	48
Pomona Island Charitable Trust .....	49
Southland Community Nursery and Education Centre.....	50
Stewart Island/Rakiura Community and Environment Trust (SIRCET).....	51
Stewart Island Community Native Plant Nursery.....	52
Urban nature panel superstar .....	53
Whakatipu Wildlife Trust (WWT).....	54
Whakatipu Reforestation Trust.....	55

## Websites for additional opportunities.....55

## Terms and conditions .....

Applying for activities .....	56
Acceptance.....	56
Cancellation .....	56

## Application form.....57



# Introduction

Nau mai, haere mai – welcome to the Department of Conservation’s (DOC’s) volunteer activities booklet, which describes some of the many different ways you can participate in conservation activities around Southland, Fiordland and Otago. These activities provide an opportunity to learn new skills, meet other people, undertake useful conservation work and enjoy Aotearoa New Zealand’s beautiful outdoors.

## What to expect

**ACCOMMODATION:** This is arranged, unless otherwise stated. Volunteers usually stay in basic backcountry huts (outdoor toilets, **no shower**, coal/gas cooking facilities), in DOC houses, on board boats or in tents.

**TRANSPORT:** This will be arranged from the pickup location to and from the worksite, unless otherwise stated.

**FOOD AND COOKING UTENSILS:** These are provided unless otherwise stated. Usually everybody helps to prepare meals.

**EQUIPMENT AND TOOLS:** These are generally provided unless otherwise stated.

**RECREATION:** Meeting people and enjoying their company is an important part of our conservation volunteer activities. Time may be given for participating in recreation activities and visiting local places of interest.

**FITNESS LEVEL:** Most activities take place outdoors and require a reasonable level of fitness and self-motivation. Assessing the suitability of applicants for activities is at the leaders’ discretion.

## FITNESS LEVEL GUIDE

**Low:** Can easily walk up to 2 hours over flat ground.

**Medium:** Can comfortably walk with a 5 kg pack for up to 4 hours over uneven ground.

**High:** Capable of walking with a 10 kg pack for up to 6 hours over uneven ground.

**Very high:** Experienced at walking with a 10+ kg pack for several consecutive days over steep, rough terrain.

## What to bring

Each activity will have its own requirements, so you will be issued with a full equipment list and information pack that is specific to the activity before starting it.

## Registration

Some activities include contact details and registration information on the activity page. For all other activities, please complete the form at the back of this booklet or apply on the DOC website ([www.doc.govt.nz/get-involved/volunteer/](http://www.doc.govt.nz/get-involved/volunteer/)).



# Working with DOC

## Our vision

*Kāore he wāhi i tua atu i a Aotearoa, hei wāhi noho i te ao.*

New Zealand is the greatest living space on Earth.

## Our purpose

*Kia piki te oranga o te ao tūroa, i roto i te ngātahitanga, ki Aotearoa.*

To work with others to increase the value of conservation for New Zealanders.

## Our values

- Kaitiakitanga (guardianship)
- Whanaungatanga (relationships)
- Safety, diversity and wellbeing
- Sustainability

## Our goals

### Our overarching goals

- ▶ To maintain and restore the diversity of Aotearoa New Zealand's natural heritage.
- ▶ To bring Aotearoa New Zealand's history to life and protect it for future generations.
- ▶ To enable whānau, hapū and iwi to carry out their responsibilities as kaitiaki of natural and cultural resources on public conservation lands and waters.
- ▶ To ensure that Aotearoa New Zealand's unique environment and heritage are a foundation for our economic, social and cultural success.
- ▶ To enrich the lives of New Zealanders and international visitors by connecting to Aotearoa New Zealand's nature and heritage.
- ▶ To encourage New Zealanders and international visitors to contribute to conservation.

### Our goals for working with volunteers

- ▶ We recognise volunteers as fundamental to achieving our vision and goals for conservation.
- ▶ We work as one team and with others to capitalise on volunteers' potential.
- ▶ We make it easy and rewarding for people to take action for conservation by volunteering.
- ▶ We deliver high-quality volunteer activities, placing the volunteer at the heart of the experience to grow conservation.
- ▶ We share, support and learn from others within the community to make bigger gains for conservation through volunteering.
- ▶ We celebrate, acknowledge and showcase volunteers' stories and their contributions to conservation.
- ▶ We are recognised for our good practice in volunteer management.



## Southland, Fiordland and Otago map



## Southland, Fiordland and Otago conservation volunteer activities





Photo: Michael Douglass



Photo: Georgia Poole

## Stewart Island/Rakiura – annual hut maintenance

Volunteers are needed to help with the annual maintenance of huts around the coastline of Stewart Island/Rakiura. The focus will be on the huts around Paterson Inlet/Whaka a Te Wera and/or the North West Circuit.

This is an ideal opportunity to visit the picturesque, rugged coastline of the island while doing worthwhile work interspersed with bird watching, photography, hunting and/or fishing (permits required).

Tasks will include painting, a full interior clean down and light building repairs.

### STEWART ISLAND/RAKIURA

3 volunteers for 8 days

Tuesday 12 September –  
Tuesday 19 September 2023

#### FITNESS/SKILL LEVEL:

Medium to high. Volunteers must be agile and capable of getting in and out of a small boat confidently. They must also be able to carry personal gear and lots of

heavy (up to 15kg) work equipment from the beach landings to the huts.

**ACCOMMODATION:** A variety of basic backcountry huts.

**PICKUP/DROP-OFF LOCATION AND TIMES:** Meet at the Rakiura National Park Visitor Centre, Stewart Island/Rakiura at 8.30am on Tuesday 12 September. Volunteers will be returned to the same location at around 3.00pm on Tuesday 19 September.

#### CONTRIBUTION TOWARDS FOOD AND TRANSPORT:

There is no charge for this activity. However, volunteers will need to make their own travel arrangements to and from Stewart Island/Rakiura.

1

2

## Stewart Island/Rakiura – Mason Bay dune restoration

This is a fantastic opportunity for people who want to visit remote areas of Stewart Island/Rakiura while also gaining biodiversity field experience. Volunteers will undertake weed control in remote sand dune environments on the west coast of Stewart Island/Rakiura. The weed control will target pest plant species like tree lupin, and weeds will be pulled by hand and then sprayed with herbicide. Volunteers will enjoy amazing views of the island as they fly from Oban to the work sites on the west side of the island.

### STEWART ISLAND/RAKIURA

3 volunteers for 8 days

Tuesday 12 September –  
Tuesday 19 September 2023

#### FITNESS/SKILL LEVEL:

A high level of fitness is required as the work is arduous and requires climbing up steep sandy slopes. Volunteers must be agile and capable of getting in and out of a

helicopter or small aircraft. They must also be able to carry personal gear and heavy (up to 15kg) work equipment from the beach landings to the huts. There will be long days spent working on the beach and walking long distances in all weather conditions. Volunteers with previous spraying experience and a Growsafe certificate would be very useful on this trip.

**ACCOMMODATION:** A variety of basic backcountry huts.

**PICKUP/DROP-OFF LOCATION AND TIMES:** Meet at the Rakiura National Park Visitor Centre, Stewart Island/Rakiura at 8.30am on Tuesday 12 September. Volunteers will be returned to the same location at around 3.00pm on Tuesday 19 September.

#### CONTRIBUTION TOWARDS FOOD AND TRANSPORT:

There is no charge for this activity. However, volunteers will need to make their own travel arrangements to and from Stewart Island/Rakiura





3

Photo: DOC

## Milford Track – Dumping Hut and track maintenance

This is a fantastic and rare opportunity to spend a week on a popular track in Fiordland before the masses of people arrive for the busy summer season. Learn about the area's interesting history and take a side trip to see the magnificent Sutherland Falls with its staggering 580-m drop.

Tasks will include hut cleaning, minor building repairs, track maintenance and a general tidy of the surrounding area.

If the weather is unsuitable and we are unable to reach Dumping Hut, work will be undertaken on the Kepler Track at Moturau and Shallow Bay huts instead.

Milford Track  
FIORDLAND NATIONAL PARK

4 volunteers for 5 days

Monday 18 September –  
Friday 22 September 2023

**FITNESS/SKILL LEVEL:**  
Medium.

**ACCOMMODATION:**  
Dumping Hut and the staff quarters.

**PICKUP/DROP-OFF  
LOCATION AND TIMES:**  
Meet at the DOC

workshop, 19 Caswell Road, Te Anau at 9.00am on Monday 18 September. Volunteers will be returned to the same location at 4.00pm on Friday 22 September.

**CONTRIBUTION TOWARDS FOOD AND TRANSPORT:**  
\$120 per person.



4

Photo: Karen Connor

## Sandfly Bay – wildlife viewing ranger

Sandfly Bay is one of the Otago Peninsula's most popular destinations, featuring hoiho / yellow-eyed penguins, rāpoka / New Zealand sea lions and other wildlife. Volunteers will educate visitors about the penguins and how to behave around wildlife.

Sandfly Bay  
OTAGO PENINSULA,  
DUNEDIN

Late afternoon until  
early evening, several  
nights per month

Mid-October 2023 –  
mid-April 2024

**FITNESS/SKILL LEVEL:** Medium.

Beach access is via a steep sand dune.

**ACCOMMODATION:**  
Not provided.

**LOCATION:** Volunteers will need to make their own way to Sandfly Bay each evening, which is a 20-minute drive from Dunedin.

**CONTRIBUTION TOWARDS FOOD AND TRANSPORT:**

There is no charge for this activity. However, volunteers will need to provide their own transport or we may be able to arrange transport with other volunteers.

**TO REGISTER / FOR FURTHER INFORMATION:** To book, contact the DOC Dunedin Visitor Centre on 027 408 3353. Volunteers must be able to commit to several nights a month. Training will be provided. For further information, visit [www.doc.govt.nz/otagovolunteers](http://www.doc.govt.nz/otagovolunteers).



5

Photo: DOC

## Piano Flat – historic water race restoration

Volunteers will carry out maintenance on the historic water race in the Piano Flat area, the only known operational water race in Southland. The work will involve clearing weeds, cutting back vegetation, earthworks and fluming maintenance. This beautiful location has great opportunities for trout fishing, bush walks and photography.

Piano Flat, Waikaia  
Forest  
NORTHERN  
SOUTHLAND

4 volunteers for 5 days

TRIP A:  
Monday 16 October –  
Friday 20 October 2023

TRIP B:  
Monday 4 March –  
Friday 8 March 2024

### FITNESS/SKILL LEVEL:

Medium to high. There is some steep terrain in the area and this trip may involve working in the rain. Basic carpentry skills would be useful but are not essential.

**ACCOMMODATION:** Local accommodation will be arranged in Waikaia. Successful applicants will be notified.

**PICKUP/DROP-OFF LOCATION AND TIMES:** Meet at the DOC workshop (at the rear

of Marshall Industries), 193 Bond Street, Invercargill at 8.30 am on the day the trip starts. Alternatively, volunteers can meet at Piano Flat – please advise the trip leader if you wish to do this. Volunteers will be returned to the DOC workshop at around 4.00pm on the last day.

**CONTRIBUTION TOWARDS FOOD AND TRANSPORT:**  
\$160 per person.



6

Photo: Christina Paterson

## Moturau Moana – historic native garden maintenance

Tucked away on the north shore of Halfmoon Bay with views into Bragg Bay, Butterfield Beach and beyond are the picturesque gardens of Moturau Moana. Originally the site of Noeline Baker's Dutch colonial home, the property was gifted to the New Zealand Government in the 1940s. Miss Baker was awarded the Loder Cup in 1949 for her keen interest in Aotearoa New Zealand's native plants and for making the gardens available to the public.

Although the homestead burnt down in 1967, the local community board still maintains the gardens with DOC's assistance, helping the Stewart Island/Rakiura community to retain an important visitor site.

Tasks will include tree trimming, weeding, planting, garden maintenance and tidying.

STEWART ISLAND/  
RAKIURA

3 volunteers for 5 days

Monday 9 October –  
Friday 13 October 2023

### FITNESS/SKILL LEVEL:

Medium. May involve working in the rain, mud and other coastal conditions, as well as long periods of bending and/or kneeling.

**ACCOMMODATION:**  
Local shared accommodation – details will be confirmed with the successful applicants.

**PICKUP/DROP-OFF LOCATION AND TIMES:** Meet at the Rakiura National Park Visitor Centre, Stewart Island/Rakiura at 8.00am on Monday 9 October. Volunteers will be returned to the same location at around 4.00pm on Friday 13 October.

**CONTRIBUTION TOWARDS FOOD AND ACCOMMODATION:**  
\$80 per person.





7

Photo: DOC

## Stewart Island/Rakiura – hut rangers

This is an excellent opportunity to experience the backcountry of Stewart Island/Rakiura. Hut rangers will be based at either Port William Hut or North Arm Hut on the Rakiura Track. This area has significant historical value and there is also a good chance of seeing kiwi in the wild, so make sure to bring your camera!

Tasks will include greeting visitors, checking hut tickets, pest control, track maintenance and cleaning hut facilities. Safety equipment will be supplied but volunteers are expected to bring their own boots, gaiters and rain gear.

### STEWART ISLAND/ RAKIURA

1–2 volunteers for  
2 weeks per trip

TRIP A: November 2023

TRIP B: April 2024

### FITNESS/SKILL LEVEL:

Medium. Volunteers will be working 4–6 hours per day. They must be good with people and self-motivated. Comprehensive training will be provided and volunteers must have a current first aid certificate. Applicants will be police vetted for this role.

**ACCOMMODATION:** Port William and North Arm huts have private hut warden quarters. Each hut has solar lighting and gas cooking facilities and can comfortably accommodate two people. This opportunity may suit a couple or two friends.

**PICKUP/DROP-OFF LOCATION AND TIMES:** Meet at the Rakiura National Park Visitor Centre, Stewart Island/Rakiura. Dates and times will be confirmed with the successful applicants.

**CONTRIBUTION TOWARDS FOOD AND TRANSPORT:** There is no charge for this activity. However, volunteers will need to make their own travel arrangements to and from Stewart Island/Rakiura and will also need to provide their own food on their days off in Oban. Reimbursement for food will be provided for one person while in the field – any partners or friends accompanying the volunteer must provide their own food.



Photo: Aristya Marzuki



8

Photo: Chris Garden

## Mavora Lakes Hut and facility maintenance

The Mavora Lakes area is an impressive landscape of serene lakes, mountains, open tussock, grasslands and beech forest, offering visitors a range of activities, including camping, fishing, mountain biking, tramping and water sports. With its large campground and five backcountry huts, the area is very popular in the summer months. This is a fantastic opportunity to come and explore this beautiful place.

Tasks will include hut cleaning, building repairs, campsite maintenance, track maintenance and setting up hut water supplies before the busy summer season starts.

Mavora Lakes  
SOUTHLAND

3 volunteers for 5 days

Monday 6 November –  
Friday 10 November 2023

**FITNESS/SKILL LEVEL:**

Medium. Carpentry/building skills would be very useful on this trip.

**ACCOMMODATION:**

Backcountry huts and possibly a night or two camping.

**PICKUP/DROP-OFF LOCATION AND TIMES:** Meet at the DOC workshop, 19 Caswell Road, Te Anau at 9.00am on Monday 6 November. Volunteers will be returned to the same location at 4.00pm on Friday 10 November.

**CONTRIBUTION TOWARDS FOOD AND TRANSPORT:**

\$100 per person.



9

Photo: Paul Mahoney

## Golden Point historic site maintenance

This is an amazing new opportunity to explore remains from the gold mining days at Golden Point Historic Reserve, home to the only complete stamper battery in Aotearoa New Zealand that is still in working order. Volunteers will help with the repair and maintenance of this significant historic site, with tasks including painting, vegetation control and minor repairs.

Macraes Flat  
CENTRAL OTAGO

8 volunteers for 5 days

Monday 6 November –  
Friday 10 November 2023

**FITNESS/SKILL LEVEL:**

Medium. Volunteers must be capable of climbing a ladder. Painting, building and scrub bar experience would also be useful on this trip.

**ACCOMMODATION:**

Dorm-style bunkrooms at the Macraes Flat field base. Hot showers, electricity and kitchen facilities are available, as well as limited cell phone coverage.

**PICKUP/DROP-OFF LOCATION AND TIMES:** Meet at the Macraes Flat field base, 497 Redbank Road, RD3, Macraes Flat at 9.00am on Monday 6 November. Volunteers will be returned to the same location at 3.00pm on Friday 10 November.

**CONTRIBUTION TOWARDS FOOD AND TRANSPORT:**

\$150 per person.

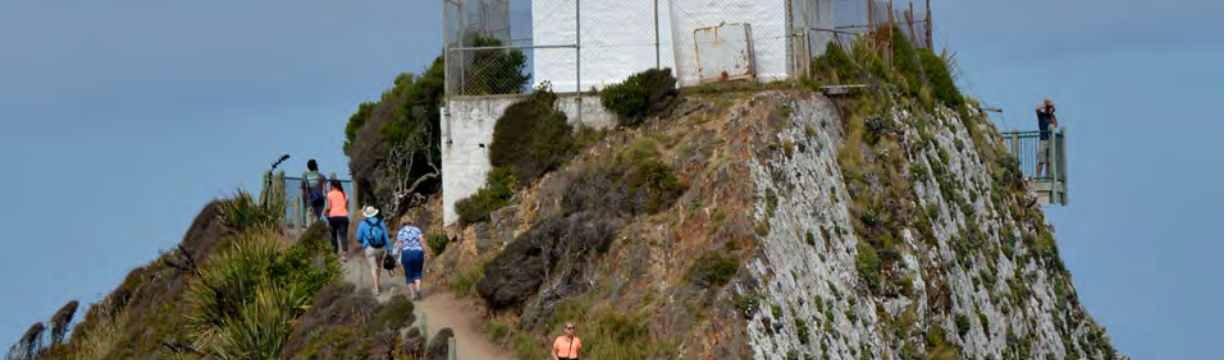


Photo: Shellie Evans

## Nugget Point Lighthouse Reserve – summer rangers

Nugget Point / Tokata Point is a popular tourist destination and home to rare endemic plant and animal species, such as the hoiho / yellow-eyed penguin. Rangers are needed to provide assistance and conservation education to visitors, as well as to maintain facilities and clean toilets as required – due to high visitor numbers, the facilities must be clean and tidy at all times. This a great opportunity for a couple or two friends.

### THE CATLINS

2 volunteers for 2 weeks per trip

#### TRIP A:

Monday 13 November –  
Monday 27 November  
2023

#### TRIP B:

Monday 27 November –  
Monday 11 December  
2023

#### TRIP C:

Monday 11 December –  
Wednesday 27 December  
2023

#### TRIP D:

Wednesday 27 December  
2023 – Monday 8 January  
2024

#### TRIP E:

Monday 8 January –  
Monday 22 January 2024

#### TRIP F:

Monday 22 January –  
Monday 5 February 2024

#### TRIP G:

Monday 5 February –  
Monday 19 February 2024

#### TRIP H:

Monday 19 February –  
Monday 4 March 2024

**FITNESS/SKILL LEVEL:** Low. Rangers need to be visible in the reserve for 4–6 hours per day, particularly around the viewing area in the evenings. The tracks around the reserve are well formed and an easy gradient. Volunteers need to have good communication skills and enjoy talking to people from the local area, as well as other parts of Aotearoa New Zealand and overseas.

**ACCOMMODATION:** Former lighthouse keeper's residence (managed by DOC) – a fully-furnished, four-bedroom brick house at the top of the reserve. A hot shower and laundry facilities are available, and all kitchen appliances and equipment are provided. Each volunteer will have their own bedroom, but the kitchen/living area and bathroom may be shared from time to time with DOC staff working in the area.

**PICKUP/DROP-OFF LOCATION AND TIMES:** Meet at the DOC Owaka Field Centre, 20 Ryley Street, Owaka at 9.00am on the first day. Volunteers will finish at 10.00am on the final day.

**CONTRIBUTION TOWARDS FOOD AND TRANSPORT:** There is no charge for this activity. However, volunteers will need to provide their own food and transport. Due to the isolated location of Nugget Point / Tokata Point, volunteers must have their own vehicles.





11

Photo: DOC

## Ulva Island – summer rangers

Ulva Island is the jewel in the crown of Rakiura National Park. This predator-free, open island sanctuary is just 8 minutes by boat across Paterson Inlet/Whaka a Te Wera from Golden Bay and has abundant birdlife, rich forest, golden sand beaches and a variety of well-formed walking tracks.

This is a rare opportunity to stay in this island paradise while acting as a roving ranger during the height of the visitor season.

Tasks will include track maintenance, weed surveillance, visitor facility maintenance, cleaning toilets, biosecurity advocacy, monitoring visitor behaviour and checking traps. There will also be ample time for other pursuits, such as bird watching and photography.

Ulva Island  
STEWART ISLAND/  
RAKIURA

1–2 volunteers for  
3–4 weeks per trip

November 2023 –  
April 2024

**FITNESS/SKILL LEVEL:** Medium.

Good communication skills and an interest in conservation are essential. Some experience with GPS would be an advantage. Applicants will be interviewed for their suitability.

**ACCOMMODATION:** Rangers will be expected to reside on the island. A single-room basic hut is

located a short walk from the island's jetty in Post Office Cove. The hut has solar lighting and gas cooking facilities and can comfortably accommodate two people, so this opportunity may suit a couple or two friends. Water is supplied from a rainwater tank and there is a solar shower and long-drop toilet. Occasional trips off the island are possible and may be arranged on a per case basis.

**PICKUP/DROP-OFF LOCATION AND TIMES:** Meet at the Rakiura National Park Visitor Centre, Stewart Island/Rakiura at 10.45 am. Dates will be confirmed with the successful applicants, so please indicate your preferred date on your application form.

**CONTRIBUTION TOWARDS FOOD AND TRANSPORT:**

There is no charge for this activity. However, volunteers will need to make their own travel arrangements to and from Stewart Island/Rakiura. Return transport between Oban and Ulva Island is provided. Food will also be provided for up to two volunteers for the duration of their stay.



Photo: Zoe Caals



12

Photo: DOC

## Hollyford valley – track and hut maintenance

This is a fantastic opportunity to experience part of a popular track in Fiordland and to learn about the area's interesting history.

The first afternoon will consist of a health and safety briefing for all volunteers, after which the group will help arrange food and equipment for the following day. Everyone will then be flown to the huts, enjoying spectacular views of the Hollyford area.

Volunteers will work alongside DOC rangers to undertake tasks such as hut cleaning, structure maintenance, track maintenance and trimming back vegetation.

There may also be an opportunity to stay at Big Bay Hut and carry out work on the hut and surrounding area.

### FIORDLAND NATIONAL PARK

4 volunteers for 9 days

Monday 27 November –  
Tuesday 5 December 2023

#### **FITNESS/SKILL LEVEL:**

Medium to high.

#### **ACCOMMODATION:**

The first night will be spent at the local holiday park in Te Anau (this will be organised for the group). The remainder of the trip

will be based at various huts along the Hollyford Track.

**PICKUP/DROP-OFF LOCATION AND TIMES:** Meet at the DOC workshop, 19 Caswell Road, Te Anau at 1.00pm on Monday 27 November. Volunteers will be returned to the same location in the early afternoon on Tuesday 5 December.

**CONTRIBUTION TOWARDS FOOD AND TRANSPORT:** \$300 per person.



Photo: Shellie Evans





Photo: Keri Tuna

## Southland – backcountry track maintenance

This is a great chance to explore some of Southland's backcountry tracks. The exact location of the trip will be determined closer to the start date, but areas that may be visited include the Blue, Takitimu and Eyre mountains.

Tasks will include clearing windfalls, clearing vegetation using scrub bars and hedge trimmers, and re-marking the tracks using orange poles and triangles.

### SOUTHLAND

3 volunteers for 5 days

Monday 13 November –  
Friday 17 November 2023

### FITNESS/SKILL LEVEL:

Medium to high.  
Backcountry tramping experience is recommended as the terrain can be uneven, muddy and steep in places. Volunteers must be able to

carry personal gear and work equipment for long periods of time.

**ACCOMMODATION:** Backcountry huts or tents.

**PICKUP/DROP-OFF LOCATION AND TIMES:** Meet at the DOC workshop (at the rear of Marshall Industries), 193 Bond Street, Invercargill at 8.30am on Monday 13 November. Volunteers will be returned to the same location around 4.00pm on Friday 17 November.

**CONTRIBUTION TOWARDS FOOD AND TRANSPORT:** \$200 per person.



Photo: DOC

## Milford Road – historic maintenance

This is a fantastic opportunity to explore Milford Sound/Piopiotahi while helping with a range of work along the Milford Road and the sound to maintain local walks and historical sites. Tasks will include painting, clearing vegetation, small building repairs and historical maintenance.

### Milford Sound/Piopiotahi and Milford Road FIORDLAND NATIONAL PARK

4 volunteers for 5 days

Monday 15 January –  
Friday 19 January 2024

### FITNESS/SKILL LEVEL:

Low. This trip is suitable for people who are less active but can still walk for 1–2 hours without a pack.

### ACCOMMODATION:

DOC staff quarters at Knobs Flat (on the Milford Road) and Milford Sound. Both houses have bunkbeds, a kitchen, a fire and a hot shower available, as well as great views!

**PICKUP/DROP-OFF LOCATION AND TIMES:** Meet at the DOC workshop, 19 Caswell Road, Te Anau at 9.00am on Monday 15 January. Volunteers will be returned to the same location at 4.00pm on Friday 19 January.

**CONTRIBUTION TOWARDS FOOD AND TRANSPORT:** \$100 per person.





Photo: Thomas Wright

## Southland – preservation of historic relics

This is a wonderful opportunity to discover several of Southland's historic relics and help to preserve them for future generations. Volunteers will be based in Invercargill for the week and will travel to multiple locations around Southland. Experiences will include exploring the gold mining and saw milling relics in Longwood Forest, the hauler in Waipohatu Recreation Area, the bucket dredge at Waipapa Point, the coastal warning system (radar) on top of The Bluff/Motupōhue, and the Gunpit Coastal Defence Camp in Bluff.

Tasks will include clearing vegetation, removing dirt, moss and lichen from the relics, and applying metal preservative to help preserve the relics for years to come and prevent further deterioration.

### SOUTHLAND

4 volunteers for 5 days

Monday 22 January –  
Friday 26 January 2024

### FITNESS/SKILL LEVEL:

Low to medium.

Most sites are easily accessible, but volunteers will be required to walk for 2–3 hours in the bush on relatively flat terrain.

**ACCOMMODATION:** Volunteers will need to arrange their own accommodation in Invercargill.

**PICKUP/DROP-OFF LOCATION AND TIMES:** Meet at the DOC workshop (at the rear of Marshall Industries), 193 Bond Street, Invercargill at 8.30 am on Monday 22 January. Volunteers will be returned to the same location at the end of each day around 4.00 pm.

### CONTRIBUTION TOWARDS FOOD AND TRANSPORT:

There is no charge for this activity. However, volunteers will need to provide their own food for the week. DOC will provide transport to the different work locations each day.



16

Photo: John Peterson

## Papatowai Campsite – maintenance

Nestled in native bush is an old DOC ranger house beside the Papatowai Campsite, which has easy access to the beautiful beach and estuary. Nearby is the Tahakopa Bay Scenic Reserve and many bush walks.

We require assistance to give the campsite and area surrounding the DOC house a general tidy up. Tasks will include painting, minor building repairs, amenity cleaning, vegetation trimming and weeding.

### CATLINS

4 volunteers for 5 days

Monday 19 February –  
Friday 23 February 2024

### FITNESS/SKILL LEVEL:

Low to medium. Painting, decorating and carpentry skills would be useful.

**ACCOMMODATION:** Fully furnished, three-bedroom DOC house at Papatowai.

A hot shower and laundry

facilities are available, and all kitchen appliances and equipment are provided.

**PICKUP/DROP-OFF LOCATION AND TIMES:** Meet at the DOC Field Centre, 20 Ryley Street, Owaka at 8.30am on Monday 19 February. The activity will finish at Papatowai at 4.00pm on Friday 23 February.

### CONTRIBUTION TOWARDS FOOD AND TRANSPORT:

\$150 per person.



17

Photo: DOC

## Skippers Point School – maintenance

This is a fantastic opportunity to travel through Skippers Canyon and explore Mount Aurum Recreation Reserve, learning about the rich history of the area, from early sheep farming to the first gold miners, while also contributing to the upkeep of Aotearoa New Zealand's historic heritage.

The remnants of Skippers township contain nationally significant historic buildings from the early gold rush era.

Volunteers will carry out maintenance on the schoolhouse, which will include painting and a general tidy up of the surrounding area.

Skippers, Mount Aurum  
Recreation Reserve  
QUEENSTOWN/  
WHAKATIPU

3 volunteers for 5 days

Monday 19 February –  
Friday 23 February 2024

### FITNESS/SKILL LEVEL:

Low. The Skippers area has full vehicle access so volunteers will only be required to walk short distances.

### ACCOMMODATION:

Four-bunk hut with a hot shower and barbecue facilities.

**PICKUP/DROP-OFF LOCATION AND TIMES:** Meet at the DOC workshop, 1 Arthurs Point Road, Queenstown at 10.00am on Monday 19 February. Volunteers will be returned to the same location at around 12.00pm on Friday 23 February.

**CONTRIBUTION TOWARDS FOOD AND TRANSPORT:** There is no charge for this activity.





18

Photo: DOC

## Fiordland – lakeside hut maintenance

This is an amazing opportunity to explore Fiordland's beautiful lakes. Volunteers will carry out maintenance on huts around two or three of these lakes, with possible visits to Lake Manapouri, Lake Te Anau, Lake Hauroko or Monowai Lake.

Tasks will include cleaning, small building repairs, painting, removing rubbish and clearing vegetation.

### FIORDLAND NATIONAL PARK

3 volunteers for 5 days

Monday 4 March –  
Friday 8 March 2024

**ACCOMMODATION:** Basic backcountry huts. Volunteers are welcome to bring their own tents if they prefer more privacy.

**PICKUP/DROP-OFF LOCATION AND TIMES:** Meet at the DOC workshop, 19 Caswell Road, Te Anau at 9.00am on Monday 4 March. Volunteers will be returned to the same location in the early afternoon on Friday 8 March.

**CONTRIBUTION TOWARDS FOOD AND TRANSPORT:** \$125 per person.

**FITNESS/SKILL LEVEL:** Medium.

Volunteers must be agile and capable of getting in and out of a small boat confidently. They must also be able to carry personal gear and lots of heavy work equipment from the beach landings to the huts.



19

Photo: DOC

## Port Pegasus/Pikihatiti – historic tin-mining site maintenance

This activity is situated in a remote area of the Rakiura National Park on Stewart Island/Rakiura and involves maintaining many historical sites that were associated with tin mining in the area during the late 1800s.

Tasks will include track clearance, re-digging drains, pulling seedlings in a significant area of ground-sluciced tailings, restoration work on the hydraulic sluicing guns and historic site monitoring.

### Port Pegasus/Pikihatiti STEWART ISLAND/ RAKIURA

2 volunteers for 10 days

March 2024 (exact dates to be confirmed in December 2023)

**FITNESS/SKILL LEVEL:**

Very high. This activity involves a minimum of 3 hours tramping each day and the work being undertaken is very arduous, so volunteers must be comfortable doing physical activity for 8 hours per day. Volunteers must also have a current first aid certificate.

**ACCOMMODATION:** Will be confirmed with successful applicants.

**PICKUP/DROP-OFF LOCATION AND TIMES:** Volunteers will meet outside the Stewart Island Experience Visitor Terminal in Bluff at 8.30am, where they will be collected by either the *Southern Winds* or the *Hananui*. Volunteers will be returned to Bluff after 2.00pm on the final day.

**CONTRIBUTION TOWARDS FOOD AND TRANSPORT:** \$350 per person.





20

*Photo: Ashleigh Morrow*

## Burwood Takahē Centre

Volunteering at the Burwood Takahē Centre will provide you with the opportunity to contribute to the Takahē Recovery Programme while also learning about this threatened species, DOC's captive breeding programme and the challenges these birds face. A major highlight is viewing takahē up close in their natural environment and learning about the conservation management techniques the Recovery Team is employing to work towards the programme's goal of returning takahē to the wild.

Volunteers will work with DOC rangers at the Burwood Takahē Centre, carrying out a variety of tasks to help keep the takahē safe and healthy. Tasks will include weekly feeding, checking and re-baiting the trapping network in and around the pens, as well as other general maintenance.

Burwood Bush  
SOUTHLAND

4 volunteers for 5 days

Sunday 24 March –  
Thursday 28 March  
2024

**FITNESS/SKILL LEVEL:** High.  
This activity involves physical outdoor work for 6–8 hours per day on uneven terrain. Good hand strength is also required when working with traps and prior experience is recommended.

**ACCOMMODATION:** Shared accommodation in a fully furnished cottage at the Burwood Takahē Centre. Hot showers, laundry facilities, kitchen appliances and equipment are provided.

**PICK UP/DROP-OFF LOCATION AND TIMES:** Meet at the Burwood Takahē Centre after 4.00pm on Sunday 24 March. The address will be given to the successful applicants.

**CONTRIBUTION TOWARDS FOOD AND TRANSPORT:**  
There is no charge for this activity. However, volunteers will need to provide their own transport to Burwood and food for the week.

**IMPORTANT INFORMATION:** The nearest town with groceries and supplies is a 30-minute drive away in Te Anau. There are no public transport options, so you will need your own vehicle.

*Photo: DOC*



21

Halfmoon Bay. Photo: Lyn Trewella

## Stewart Island/Rakiura – Raroa historic house and garden maintenance

Raroa house and gardens were established in 1934 and are the former residence of Captain George Turner, an avid conservationist who recognised the importance of protecting walks in the vicinity of Halfmoon Bay that had been undamaged by early milling and land clearance. George planted many Aotearoa New Zealand natives on the 1.6 hectares of land now known as the Raroa Scenic Reserve.

This is a great opportunity to help restore this historic property on Stewart Island/Rakiura. Tasks will include painting, cleaning, weeding and basic building maintenance. There will also be time to visit some of the local tracks and other areas of interest around Halfmoon Bay.

STEWART ISLAND/  
RAKIURA

4 volunteers for 5 days

Monday 29 April –  
Friday 3 May 2024

**FITNESS/SKILL LEVEL:** Medium.  
May involve working in the rain, mud and other coastal conditions, as well as long periods of bending and/or kneeling.

**ACCOMMODATION:** Will be confirmed with the successful applicants.

**PICKUP/DROP-OFF LOCATION AND TIMES:** Meet at the Rakiura National Park Visitor Centre, Stewart Island/Rakiura at 8.30 am on Monday 29 April. Volunteers will be returned to the same location at around 4.00 pm on Friday 3 May.

**CONTRIBUTION TOWARDS FOOD AND TRANSPORT:** There is no charge for this activity. However, volunteers will need to make their own travel arrangements to and from Stewart Island/Rakiura. Food, accommodation and transport will be provided by DOC on the island.



Raroa House. Photo: DOC





22

Photo: Rachael Egerton

## Port Craig Hut and South Coast Track – maintenance

The Port Craig area has an amazing story to tell, with many relics remaining today – and on a clear day, the coastal and mountain views are breathtaking.

The first morning will consist of a health and safety briefing for all volunteers, after which the group will help arrange food and equipment. Volunteers will then be in for a spectacular treat as they are flown to Port Craig by helicopter.

Tasks will include track work, clearing vegetation and minor structure maintenance. There will also be time to explore this wonderful part of southern Fiordland.

FIORDLAND NATIONAL PARK

4 volunteers for 8 days

Tuesday 4 June –  
Tuesday 11 June 2024

### **FITNESS/SKILL LEVEL:**

Medium to high. Volunteers must be capable of carrying a full tramping pack for up to 6 hours, and extended periods of time may be spent using a scrub bar.

**ACCOMMODATION:** The trip will be based on the South Coast Track, mainly at the Port Craig School Hut.

**PICKUP/DROP-OFF LOCATION AND TIMES:** Meet at the DOC workshop, 19 Caswell Road, Te Anau at 9.00 am on Tuesday 4 June. Volunteers will be returned to the same location in the early afternoon on Tuesday 11 June.

**CONTRIBUTION TOWARDS FOOD AND TRANSPORT:** \$300 per person.

## Other volunteer opportunities



Photo: Sabine Bernert





Photo: Dawn Patterson

## Bluff Hill Motupōhue Environment Trust



BLUFF

Bluff is a town and seaport that is situated 30 km south of Invercargill. It is overlooked by The Bluff/Motupōhue, a culturally, recreationally and ecologically important area that is one of the last populated places in Aotearoa New Zealand where the forest meets the sea.

The Bluff Hill Motupōhue Environment Trust, formed in 2008, is dedicated to the restoration and protection of the natural environment on and around Motupōhue. It is involved in pest control, revegetation, species translocation, education and raising public awareness, and aims to provide an environment where native birds, plants and invertebrates not only survive but thrive on and around Motupōhue.

Volunteer opportunities include working control lines (clearing overgrown vegetation, rebaiting stations and cleaning out traps) on a weekly, bi-weekly or monthly basis. This work takes 2–4 hours depending on the control line and you can work alone or as part of a team with alternating work periods. An experienced line worker will train you on the first day on your line, and basic tools and equipment will be provided.

This is a great chance to get fresh air and exercise while enjoying bird song and experiencing the satisfaction of catching pests and helping to preserve this important area.

The Trust relies on volunteers to run its projects and is always keen to welcome new people.

**FITNESS/SKILL LEVEL:** Medium to high.

**TO REGISTER/FOR FURTHER INFORMATION:**

Visit the Trust's website and Facebook page at [www.motupohue.nz](http://www.motupohue.nz) and [www.facebook.com/BHMET](http://www.facebook.com/BHMET) or email [info@motupohue.nz](mailto:info@motupohue.nz).



Photo: DOC

## Coal Island / Te Puka Hereka



Coal Island,  
Preservation Inlet  
FIORDLAND  
NATIONAL PARK

There will be  
numerous trips  
throughout the year

The South West New Zealand Endangered Species Charitable Trust was established in 2004 and includes representatives with private, government and iwi interests. The Trust has a close working relationship with DOC.

In 2005, the Trust developed and implemented a plan to rid Coal Island of red deer,

stoats and mice. With the initial eradication now complete, it is essential that work continues to keep the island pest free so that it can flourish and to allow the introduction of endangered native birds, invertebrates, lizards and plants. To help achieve this, volunteers are needed to help conduct several trap checks throughout the year.

**TO REGISTER/FOR FURTHER INFORMATION:**

Visit the Trust's website and Facebook page at [www.coalisland.co.nz](http://www.coalisland.co.nz) and [www.facebook.com/tepukahereka.coalisland](http://www.facebook.com/tepukahereka.coalisland).



Photo: Karen Connor

## Coastal Otago

### DUNEDIN

Conservation groups around Dunedin and the coastal Otago area are keen to hear from new volunteers. Joining a community group is a great way to meet other people, engage in meaningful conservation work and access beautiful areas of Coastal Otago that are often easily missed.

**FOR FURTHER INFORMATION:** Email [volunteerscoastalota@doc.govt.nz](mailto:volunteerscoastalota@doc.govt.nz) or visit the Conservation Volunteers Coastal Otago Facebook page at [www.facebook.com/Conservationvolunteerscoastalotago](http://www.facebook.com/Conservationvolunteerscoastalotago).



Photo: Ngāi Tahu Tourism

## Hollyford Conservation Trust – Te Roopu Manaaki o Whakatipu Waitai



### FIORDLAND NATIONAL PARK

Martins Bay lies at the end of the Hollyford valley, just north of Milford Sound/Piopiotahi. This 'biodiversity hotspot' has a range of landscapes, habitats, flora and fauna – both marine and terrestrial – that are unparalleled anywhere else in Aotearoa New Zealand.

The Hollyford Conservation Trust, established in 2014, aims to protect, enhance and restore the native flora and fauna of the lower Hollyford valley through intensive pest control over a 2600-hectare area. The Trust undertakes regular stoat trap checks and bait station work to suppress rats, stoats and possums to low levels. This has resulted in an incredible return of birdlife to the valley in the 9 years the Trust has been operating.

The Trust welcomes volunteers to assist with vegetation clearing and track maintenance on our network of over 200 km of lightly marked bait station and trapping lines, as well as other projects as they arise, such as replacing traps, weed control, bait station work and general maintenance. Volunteers must have a high level of fitness and be familiar with backcountry travel. Preference is given to volunteers with track-cutting experience.

This is an amazing opportunity to visit a remote and beautiful part of Fiordland and contribute to a successful predator control project.

**FITNESS/SKILL LEVEL:** Moderate to high. Volunteers should have a moderate or high level of fitness and basic bush navigation skills.

**ACCOMMODATION:** Provided at Martins Bay.

**FOR FURTHER INFORMATION:**

Visit [www.hollyfordconservationtrust.org.nz](http://www.hollyfordconservationtrust.org.nz) or email [info@hollyfordconservationtrust.org.nz](mailto:info@hollyfordconservationtrust.org.nz).

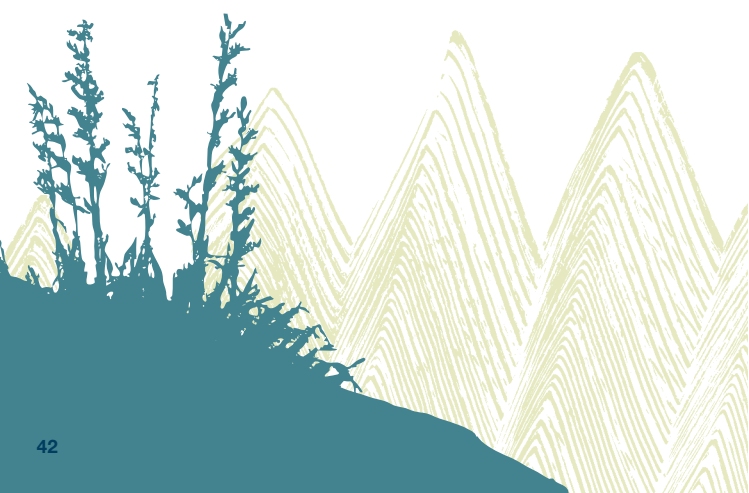




Photo: Herb Chrostphers

## Lower Clutha planting days

### DUNEDIN

The lower Clutha planting days offer a great opportunity for hands-on involvement in important local conservation projects. As well as visiting beautiful locations, you will be improving the health of freshwater ecosystems and helping to secure a future for the remarkable species that depend on them.

A day out in the field with our rangers will mostly involve planting native species such as harakeke/flag, pūrei/Carex sedge, tī kōuka/cabbage tree and toetoe. It might also involve laying out plants in the best places for growth and survival, as well as the important task of official photographer to record the good work being achieved.

**FITNESS/SKILL LEVEL:** Low. There will be a variety of tasks to suit everyone and no previous experience is required as a demonstration will be given.

### TO REGISTER/FOR FURTHER INFORMATION:

Email [volunteerscoastalota@doc.govt.nz](mailto:volunteerscoastalota@doc.govt.nz) or register online at [www.doc.govt.nz/get-involved/volunteer/in-your-region/otago/clutha-planting-days/registration/](http://www.doc.govt.nz/get-involved/volunteer/in-your-region/otago/clutha-planting-days/registration/).



Photo: DOC

## Mamaku Point Conservation Trust

### STEWART ISLAND/RAKIURA



Mamaku Point  
CONSERVATION RESERVE

The Mamaku Point Conservation Trust, established in 2017, is guardian of the Mamaku Point Conservation Reserve, an ecological restoration project that encompasses the entire peninsula beyond the Lee Bay and Horseshoe Bay beaches on Stewart Island/Rakiura. This 158-hectare reserve includes ancient native podocarp forest and areas that were previously grazed as farmland. It is protected by a 2.1-km-long predator-proof fence that protects more than 125 species of native birds, plants and invertebrates from invasive predators.

The Trust welcomes local or visiting volunteers to help with a range of projects, such as track clearance, weed control, fence maintenance, replanting and restoration of the old school camp.

**FITNESS/SKILL LEVEL:** Moderate. Volunteers should have a moderate level of fitness and basic bush navigation skills.

**FOOD:** Volunteers will need to provide their own food (which may be prepared in the reserve's kitchen facility).

**ACCOMMODATION AND TRANSPORT:** Volunteers who are visiting the island will be provided with accommodation within the reserve, as well as transport to and from the ferry/flight terminal.

**FOR FURTHER INFORMATION:** Visit [www.mamakupoint.nz](http://www.mamakupoint.nz) or contact Antony – phone 021 949 960 or email [antony@mamakupoint.nz](mailto:antony@mamakupoint.nz).





Photo: DOC

## Omaui Landcare Charitable Trust

### OMAUI SCENIC RESERVE

On the south coast of Aotearoa New Zealand, approximately 25 minutes southwest of Invercargill, lies the beautiful Omaui Scenic Reserve.

Management of this reserve is assisted by the Omaui Landcare Charitable Trust – a small and dedicated pest-control group that was established in 2013 and is made up of local residents as well as people from Invercargill and beyond. The Trust is currently restoring the ecosystem at Omaui to provide a place where native species are thriving!

The Trust is always keen to welcome new volunteers, so please come and lend a hand with renewing baits and gas packs in our network of Goodnature A24 traps during August and February. This is a great opportunity to make a difference while getting fresh air and exercise and enjoying the stunning views.

**FOR FURTHER INFORMATION:** Visit the Trust's Facebook page at [www.facebook.com/OmauiLandcareCharitableTrust](https://www.facebook.com/OmauiLandcareCharitableTrust) or contact John Collins – phone 022 635 1224 or email [omauilandcaregroup@gmail.com](mailto:omauilandcaregroup@gmail.com).



Photo: Chris Baillie

## Orokonui Living Legends

### Orokonui Scenic Reserve, Waitati NORTH OTAGO

Regular working days take place throughout the year

The Orokonui Scenic Reserve is a 28-hectare tidal estuary at the base of the Orokonui valley and the southern reach of Blueskin Bay. It is important for whitebait and wading birds and is a peaceful recreation area for the residents of Waitati.

Orokonui Living Legends aims to transform the low-lying rank pasture in this area into a thriving natural wetland, much like it might have been more than 150 years ago. By establishing and growing native plantings, the restored habitat at Orokonui Scenic Reserve will link the Orokonui Ecosanctuary (307 hectares of 100-year-old regenerating forest) with Blueskin Bay to create a single 'mountains to sea' ecosystem of indigenous vegetation that provides foraging habitat for birds.

Workdays take place fortnightly on Sundays from September to May, starting at 10.00 am and finishing at 12.00 pm. There are no workdays from June to August.

**TRANSPORT:** Transport is available from the Otago University Bookshop, 378 Great King Street, North Dunedin at 9.40 am – please book a seat with the organiser. Alternatively, volunteers can meet at Waitati at 10.00 am. Volunteers will be emailed prior to each workday advising which site in Waitati they will be working at.

### TO REGISTER / FOR FURTHER INFORMATION:

Please phone the DOC Dunedin Office on 03 477 0677 or email [chrisbaillie77@gmail.com](mailto:chrisbaillie77@gmail.com).



Photo: DOC

## Otatara Landcare Group



INVERCARGILL

Since 2000, the Otatara Landcare Group, along with many volunteers, has put a lot of time into restoring a 14-hectare area of pasture grass that is located between two remnants of nationally significant native tōtara

forest. To date, the Bushy Point Restoration Project has seen 30,000 native plants being planted in this magnificent area.

The Landcare Group also organises predator trapping over 90 hectares around Bushy Point as part of the Otatara Pestbusters programme.

There are often opportunities to volunteer at this site and any help you can give is welcomed.

**FOR FURTHER INFORMATION:** Visit [www.otataralandcare.org.nz](http://www.otataralandcare.org.nz) or contact Chris Rance (03 213 1161) or Barry Smith (03 213 1150).



Photo: Lynley King

## Pomona Island Charitable Trust



LAKE MANAPOURI

Since 2005, the Pomona Island Charitable Trust has been helping to maintain Pomona Island in Lake Manapouri as a predator-free sanctuary where native bird species can thrive. Home to the critically

endangered Haast tokoeka, as well as the mohua/yellowhead, South Island robin, kea and kārearea / New Zealand falcon, Pomona Island is an accessible location for visitors to see, hear and learn about the flora and fauna that are native to Fiordland.

Regular day trips are run throughout the year so that volunteers can undertake trap checks to help keep the island free of introduced predators.

**TO REGISTER / FOR FURTHER INFORMATION:** Visit the Trust's website and Facebook page at [www.pomona-island.org.nz](http://www.pomona-island.org.nz) and [www.facebook.com/pomonarona](http://www.facebook.com/pomonarona), or email [pomona.rona@gmail.com](mailto:pomona.rona@gmail.com) to be added to their volunteer email list and receive information on future working bees on Pomona Island.



Photo: DOC

## Southland Community Nursery and Education Centre



The Southland Community Nursery at Otatara near Invercargill gives volunteers the chance to grow their own locally sourced native plants for conservation activities.

OTATARA

Training days for plant propagation and a wide range of nature-related workshops are available throughout the year.

Volunteers can also lend a hand in the nursery or assist with school visits to the Education Centre on site.

### FOR FURTHER INFORMATION:

Visit [www.southlandcommunitynursery.org.nz](http://www.southlandcommunitynursery.org.nz) or contact Chris Rance – phone 03 213 1161 or email [rances@southlandcommunitynursery.org.nz](mailto:rances@southlandcommunitynursery.org.nz).



Photo: Willy Gamble

## Stewart Island/Rakiura Community and Environment Trust (SIRCET)



STEWART ISLAND/RAKIURA

SIRCET has been carrying out pest control and habitat restoration in a 210-hectare area on the edge of Oban township for the past 19 years. It maintains lines of rat and possum traps, controls invasive weeds, maintains a native planting restoration site at Lonnekers Beach / Lee Bay and

has a community native plant nursery. SIRCET's trapping efforts have significantly reduced pest numbers, allowing native birds to flourish, while the nursery produces native plants for planting sites and to enhance local gardens, providing habitat for native birds and invertebrates.

The Trust relies heavily on volunteers and has a variety of jobs to suit all fitness levels, including nursery work, trap construction, trap checks and monitoring, and track maintenance. Volunteers are welcome to help out for a few days or a few months.

**ACCOMMODATION:** May be available.

**FOR FURTHER INFORMATION:** Visit the SIRCET website at [www.sircet.org.nz](http://www.sircet.org.nz) or contact SIRCET – phone 0204 167 4160 or email [pest-manager@sircet.org.nz](mailto:pest-manager@sircet.org.nz).





Photo: Willy Gamble

## Stewart Island/Rakiura Community Native Plant Nursery

### STEWART ISLAND/ RAKIURA

The Stewart Island/Rakiura Community Native Plant Nursery is a great resource for the local community,

propagating eco-sourced native species to replace weeds and helping with restoration activities around the township and in Rakiura National Park. The nursery produces native plants for planting sites and to enhance local gardens, providing habitat for native birds and invertebrates. Plants are also available to local residents for a donation. The nursery relies heavily on volunteer support, with community members and visiting school groups giving their time to propagate and raise seedlings.

**FOR FURTHER INFORMATION:** If you are visiting Stewart Island/Rakiura and would like to help, contact SIRCET – phone 0204 167 416 or email [pest-manager@sircet.org.nz](mailto:pest-manager@sircet.org.nz).



Photo: DOC

## Urban nature panel superstar

### DUNEDIN

Dunedin is known as the wildlife capital of New Zealand, with special creatures and places for people to connect with.

Urban nature panels have been placed in various locations around Dunedin to encourage people to pay attention to different elements of nature within the city. The panels have short thought-provoking statements with engaging images that provide a link to further information so that people can connect to something they may not have known about before.

The trust is looking for individuals or groups to help rotate urban nature panels across the city at the beginning of each season. By looking after the panels, volunteers will play a part in helping connect people to nature.

**FITNESS/SKILL LEVEL:** Medium. Most panels are easily accessible by road, but volunteers will need to be able to carry the signs and equipment. A demonstration and tools will be provided; however, volunteers will need their own transport.

**FOR FURTHER INFORMATION:**  
Email [volunteerscoastalota@doc.govt.nz](mailto:volunteerscoastalota@doc.govt.nz).



Photo: © Brendan Bombaci (kairologic.com)

## Whakatipu Wildlife Trust (WWT)



WHAKATIPU BASIN/  
QUEENSTOWN

The WWT, formed in 2017, is committed to creating and maintaining a predator-free environment throughout the greater Lake Wakatipu area to enable birds and other native wildlife to flourish. It is

comprised of several like-minded community groups who undertake pest control within the area.

Fortunately, there are pockets of native forest in the Whakatipu basin that are easily accessible, many of which have populations of native birds that need protection from introduced pests, particularly rats, stoats and possums. These birds include tūi, korimako/bellbird, kārearea/New Zealand falcon, kererū/New Zealand pigeon, pīwakawaka/fantail, titipounamu/rifleman, yellow-crowned kākārīki and kea, to name just a few.

The WWT is working towards the Government's Predator Free 2050 goals and welcomes volunteers to assist its member groups with their trapping endeavours. Trapping sites range from Glenorchy at the head of the lake through to Fortune or Bobs Cove and Queenstown, as well as sites around the lake from Kelvin Heights through to Wye Creek. There are also opportunities to volunteer in Arrowtown and the Gibbston valley.

### TO REGISTER / FOR FURTHER INFORMATION:

Visit [www.whakatipuwildlifetrust.org.nz](http://www.whakatipuwildlifetrust.org.nz) or email [hello@whakatipuwildlifetrust.org.nz](mailto:hello@whakatipuwildlifetrust.org.nz).



Photo: Whakatipu Reforestation Trust

## Whakatipu Reforestation Trust



WHAKATIPU BASIN/  
QUEENSTOWN

The Whakatipu Reforestation Trust has been working with the community to grow and plant native plants, including threatened species, throughout the Whakatipu basin in and around Queenstown since 2013.

This is creating wildlife corridors that attract native birds and insects back to the basin, significantly enhancing the region's biodiversity.

The Trust welcomes volunteers to help out at the nursery every Wednesday and on community planting days throughout autumn and spring. All public planting days are advertised on the Trust's Facebook page:

[www.facebook.com/wrtqt.org.nz](http://www.facebook.com/wrtqt.org.nz).

The Trust also works with local schools to inspire students to embrace kaitiaki/stewardship of the natural environment.

**FOR FURTHER INFORMATION:** Visit [www.wrtqt.org.nz](http://www.wrtqt.org.nz) or contact the volunteer coordinator – email [volunteer@wrtqt.org.nz](mailto:volunteer@wrtqt.org.nz).

## Websites for additional opportunities

Department of Conservation  
[www.doc.govt.nz](http://www.doc.govt.nz)

Southland Ecological Restoration Network (SERN)  
[www.sern.org.nz](http://www.sern.org.nz)

New Zealand Trust for Conservation Volunteers (NZTCV)  
[www.conservationvolunteers.org.nz](http://www.conservationvolunteers.org.nz)

Conservation Volunteers New Zealand  
[www.conservationvolunteers.co.nz](http://www.conservationvolunteers.co.nz)

## Terms and conditions

### Applying for activities

One application form should be completed for each person (photocopy extra copies if required) and sent to Department of Conservation, PO Box 743, Invercargill 9840. Do not send any money with your application. Alternatively you can apply online at [www.doc.govt.nz/get-involved/volunteer](http://www.doc.govt.nz/get-involved/volunteer).

When considering your activity options, take into account the fitness level required, the working conditions and your availability.

### Acceptance

You will receive confirmation of your booking once you have been accepted for your chosen conservation activity. Every effort will be made to notify you within a reasonable timeframe, but please note that if you are applying months in advance, you may not receive notification of acceptance until closer to the activity's scheduled date.

Due to the popularity of volunteer activities, we are unable to guarantee that all applicants will be accepted for a particular activity. Many activities are oversubscribed, in which case ballots may be conducted.

We will advise on any changes or additional details concerning the activity. If you are applying as a couple or with friends, please specify this on your application form.

### Cancellation

If you are no longer able to attend an activity, please notify the Volunteer Coordinator as soon as possible - phone 03 211 2400 or email [invercargill@doc.govt.nz](mailto:invercargill@doc.govt.nz). Please note that last-minute volunteer cancellations may result in the whole activity being cancelled.

Volunteers who cancel with at least 4 weeks' notice are eligible for a full refund. Cancellations within 4 weeks of the activity commencing are not eligible for a refund.

Extreme weather conditions (eg flooding, snow) may make it impractical to carry out the activity as defined here. In such cases, we will make every effort to provide an alternative activity. If this is not possible, we reserve the right to cancel the activity, in which case a full refund will be made.

## Application form

**One application form required per person.**

Note: 18 years is recommended as the minimum age without parental supervision. There is no upper age limit.

First name: .....

Surname: .....

Address: .....

.....

.....

Postcode: ..... Email address: .....

Telephone (day): ..... DOB: .....

Male

Female

Gender diverse

Choose not to specify

**List the activities you are applying for below**

(in order of preference):

Activity no:      Activity name and date:

.....

.....

.....

.....

Do you wish to participate in more than one activity (if spaces are available)? Yes/No

Do you have any skills/experience that might be useful (eg track construction, painting)?

.....

Do you wish to have your contact details sent to other volunteers on the same activity for transportation arrangements?

Yes/No

Do you have a current first aid certificate?

Yes/No





Please state any medical conditions (eg diabetes, heart condition, asthma, allergies, food intolerance):

Are you dependent on any medication?

Yes/No

Please provide details: .....

Dietary needs (eg vegetarian, vegan):

Contact details of next-of-kin in case of an emergency:

Name: .....

Address: .....

Relationship: ..... Phone: .....

Please add me to the mailing list to receive the next conservation volunteer activities booklet.

Send to:

Conservation Volunteer Coordinator

Department of Conservation

PO Box 743

INVERCARGILL 9840

Phone: (03) 211 2400

Email: [invercargill@doc.govt.nz](mailto:invercargill@doc.govt.nz)



## Care for Aotearoa



### Protect nature

Keep your distance and don't feed wildlife. Follow any rules restricting dogs, fires, drones or vehicles.



### Be prepared

Stay safe in the outdoors by following the Land Safety Code.

- ▶ Choose the right trip for you.
- ▶ Understand the weather.
- ▶ Pack warm clothes and extra food.
- ▶ Share your plans and take ways to get help.
- ▶ Take care of yourself and each other.



### Keep NZ clean

Take all rubbish with you and use toilets where provided.



### Show respect

Respect others, respect culture.



Department of Conservation  
*Te Papa Atawhai*



Te Kāwanatanga  
o Aotearoa  
New Zealand Government



**For more information,  
contact:**

**Conservation Volunteer Coordinator**

Department of Conservation  
PO Box 743  
INVERCARGILL 9840

**PHONE:** (03) 211 2400

**EMAIL:** [invercargill@doc.govt.nz](mailto:invercargill@doc.govt.nz)

**[www.doc.govt.nz](http://www.doc.govt.nz)**

Cover: Volunteers oiling the bucket dredge. *Photo: Amy Duffill-Brookes*

Back: North Mavora Lake. *Photo: Pania Dalley*

This information was accurate at the time of printing.  
For the latest information on DOC's policies and facilities,  
visit [www.doc.govt.nz](http://www.doc.govt.nz).

*Published by:*

Department of Conservation  
Murihiku/Invercargill Office  
PO Box 743  
Invercargill 9840

June 2023

*Editing and design:*

Te Rōpū Ratonga Auaha, Te Papa Atawhai  
Creative Services, Department of Conservation

This publication is produced using paper sourced from  
well-managed, renewable and legally logged forests.



**Te Kāwanatanga  
o Aotearoa**  
New Zealand Government