

WEST COAST *TAI POUTINI*
CONSERVATION BOARD



Annual Report 1 July 2013 to 30 June 2014

Treetop Walkway September 2013



Last meeting of current Board 28 April 2014 Hokitika (Absent C Backes and J Jones)



**WEST COAST *TAI POUTINI*
CONSERVATION BOARD**

ANNUAL REPORT
1 July 2013 to 30 June 2014

Presented to the New Zealand Conservation Authority
Pursuant to Section 6(O) of the Conservation Act 1987

ISSN 1172-918X (Print)
ISSN 1179-2647 (Online)

Serviced by Department of Conservation
Private Bag 701
HOKITIKA

INTRODUCTION

This report is presented to the New Zealand Conservation Authority pursuant to section 6(O) of the Conservation Act 1987. Copies of the report have been circulated to individuals and organizations with an interest in the Board's activities.

Members of the public are welcome to attend Conservation Board meetings. If you would like more information on the West Coast *Tai Poutini* Conservation Board please see the website www.conservationboards.org.nz or contact the Board Support Officer at the Department of Conservation in Hokitika, phone (03) 756 9154.

Functions

The West Coast *Tai Poutini* Conservation Board is an independent advisory body for public conservation land while the Department of Conservation is the day-to-day manager. The Board has a number of statutory roles under various Acts including:

- the recommendation of a West Coast Conservation Management Strategy (CMS) to the New Zealand Conservation Authority (NZCA) for approval,
- advising the Department of Conservation and the NZCA on how conservation management strategies and plans will be put into practice,
- reporting on the implementation of the CMS,
- the approval of Conservation Management Plans,
- the recommendation of National Park Management Plans to the NZCA for approval,
- advising the Department of Conservation and NZCA on conservation matters, and proposed changes to the status of land of national and international significance,
- liaising with the Fish and Game Council on conservation matters, and
- carrying out other powers delegated by the Minister of Conservation, the Conservation Act or any other Act.

Area of Responsibility

The area of responsibility for the West Coast *Tai Poutini* Conservation Board is the West Coast from north of Karamea south to Big Bay (refer to the map at the

end of the report). This area corresponds to that of the West Coast Region, South Island, except for Kahurangi National Park (which is the responsibility of the Nelson Marlborough Conservation Board), Arthur's Pass National Park (Canterbury Aoraki Conservation Board) and Mt Aspiring National Park (Otago Conservation Board). The area also extends out to the twelve-nautical mile limit with respect to coastal and marine issues, and out to the 200 nautical mile limit with respect to marine mammal issues.

Westland *Tai Poutini* National Park and Paparoa National Park lie completely within the Board's jurisdiction. The overlap of the Nelson Marlborough, Canterbury Aoraki and Otago Conservation Boards with the West Coast Region necessitates close co-operation with those Boards and at times the West Coast *Tai Poutini* Conservation Board advocates for cross-boundary issues. The Board's area also shares common boundaries with the Southland Conservation Board.

Approximately twenty-five percent of all public conservation land in New Zealand lies within the West Coast Region. The large number of issues which are of interest to the Board include:

- ecosystem management and management of plant and animal species such as mistletoe, Westland petrel/*taiko*, white heron/*kotuku*, blue duck/*whio*, rowi (formerly Okarito brown kiwi), Haast *tokoeke*, great spotted kiwi/*roa*, mohua and Powelliphanta species;
- management of recreational facilities;
- management of historic sites;
- concession activities, including those relating to recreation and tourism activities, grazing, industrial use, baches, filming, gravel extraction, and;
- mining and access arrangements and
- marine protection.

The West Coast *Tai Poutini* Conservation Board has a responsibility to the people of the West Coast, and the wider New Zealand population, to ensure these lands and waters, and the biodiversity which they contain, are protected and enhanced.

The total area of the West Coast Region comprises 1,913,000 ha. Of this total approximately 84% (1,610,000 ha) is contained within the boundary of the West Coast *Tai Poutini* Conservation Board's area of jurisdiction.

Features of the Area

Paparoa National Park	39023 ha
Westland <i>Tai Poutini</i> National Park	131330 ha
Victoria Conservation Park	204675 ha
Scenic Reserves -114	79405 ha
Historic Reserves - 19	12644 ha
Recreation Reserve - 92	402 ha

Ecological Areas – 45	216506 ha
Amenity Areas – 21	17098 ha
Stewardship Areas 390	845383 ha
Wilderness Areas – 3	111602 ha

N.B. These are the areas the Department administers. For example, most Historic Reserves and Recreation Reserves are either controlled and managed by or vested with local authorities or an incorporated society.

Membership

The names, locations of the members of the West Coast *Tai Poutini* Conservation Board and attendance at meetings from 1 July 2013 to 30 June 2014 are shown below. The Board's co-opted member Paula Sheridan (Okarito) was appointed to the Board along with four other new members appointed 1 May 2014. A further three new members term commences on 1 July 2014.

**Clare Backes	Hokitika	3
*Stewart Robertson	Greymouth	6
*Jane Jones	Westport	3
*Doug Baker	Greymouth	6
Terry Scott	Oxford	5
Kori Hutana	Hokitika	4
^Mike Legge	Charleston	6
Kim Thomas	Westport	6
#Paula Sheridan	Okarito	4

New Board Members appointed 1 May 2014

Paulette Birchfield	Greymouth
David Carruthers	Hokitika
Dan Moloney	Westport
Robert Roney	Greymouth
Paula Sheridan	Okarito

New Board Members appointed 1 July 2014

Veronica Baldwin	Greymouth
John Taylor	Reefton
Coraleen White	Westport

* Members whose term expired but were extended to 30 April 2014

**Member resigned

Member co-opted to Board 21 September 2012 to 30 April 2014

^ Reappointed for a further term

Overall attendance by members has been high. Some members also represented the Board at other meetings, i.e. NZ Conservation Authority December meeting, multi party talks and Conservation Inc.

Conservation Board Meetings

During the reporting period the West Coast *Tai Poutini* Conservation Board held six formal meetings, and only one half day field inspection. With the timeframe of the conservation board review, one two day meeting was cancelled and replaced by two one day meetings. Members have used email extensively to consider and discuss advice, submissions and other issues between Board meetings.

5 July 2013 Hokitika

Four members travelled to Nelson to meet with the Minister of Conservation on 21 May, where they were informed of the Minister's decision on the access arrangement for the Escarpment Mine. This was reported back to Board in July meeting.

The Board received a letter from Forest and Bird requesting certain information in the form of an affidavit. The Board decided not to provide the affidavit. They considered that the relevant information the board was prepared to provide relating to the access arrangement was accessible in the public domain.

The Board were involved with multi party talks relating to the potential reserve on the Buller coal plateaux and agreed to the same confidentiality clause other parties had agreed to.

At this meeting various Departmental Permissions staff attended and had valuable discussions with Board on concessions/mining and statutory land management. They explained to Board the processes and timeframes the Permissions team are required to work to. The Department have established a new database that will be able to generate mining reports similar to those the board receives for concessions. The Statutory Land Advisor provided a document on land status definitions which was a very useful document and would be added to Induction Toolbox for new members.

Technical Advisor Marine also attended the meeting and gave a presentation on the West Coast marine environment. The Board members were of the opinion that it was important to give marine issues a higher profile.

Board members were involved with the Westland National Park Management Plan Partial Review panel and attended regular meetings.

Departmental staff were undergoing a major restructuring process which was proving very stressful. All staff should anticipate knowing the outcome by the end of August.

19 September 2013 - Hokitika

A CMS workshop was held to set in place a way of moving forward for better reporting. Board member Jane Jones led the Board in developing a traffic light dashboard as a template for monitoring the CMS. A short break in the afternoon was taken to visit to the Treetop Walkway at Mahinapua. The monitoring workshop continued until early evening.

With the commencement of the new structure on 2 September, the Board meeting coincided with a visit from newly appointed Director General, Lou Sanson. This was a significant opportunity for the Board to meet with Director General and have some good general discussion.

20 September 2013

Westpower gave a further presentation on their proposals for a hydro scheme at Waitaha, and indicated they would inform the Board of future progress.

The Board were advised that text for the Westland National Park Management Plan Partial Review had not been finalised. A special meeting would be arranged for this to be formally presented to the Board.

Board members were briefed on the Department's new structural changes, including the new Partnerships and Services teams. The former West Coast Conservancy was now part of the North and Western South Island Region, i.e. Kaikoura, Nelson and West Coast. The structure is driven by desire to work more effectively with the community, business and iwi to achieve more conservation.

The Minister appointed a Review Panel to determine how Boards will fit with the new DOC management structure. The Board were concerned with the composition of the panel, which did not appear to have sufficient Conservation Board representatives. They were also concerned with the short timeframe for the process, which didn't appear to involve public consultation. The Board made their recommendations to the Minister and hoped that their recommendations would be useful in discussions with the Review Panel.

The Board had concerns over a company proposing to drill for ilmenite at Maher Swamp. With the Permissions Manager present at the meeting, many of the Boards questions were clarified.

24 October 2013

This half day special meeting was held so the Department could formally present the Board with the partial review of the Westland National Park Management Plan. The partial review was presented by Kate Brooking (RMA National Planning Advisor) and Ian Wightwick (Technical Advisor, Recreation Hokitika). They were able to answer any further questions from Board. Both Stewart Robertson and Mike Legge from the Board had been heavily involved with the review process and were on the panel for the hearings, held earlier in the year. Once the partial review was received it was classed as a public document. The Board would advise its position re the partial review, in discussion with the Department, at the next meeting

21 November 2013

The Board met in Hokitika for a discussion on their next steps towards the Westland National Park Management Plan Partial Review. The CMS reporting template was finalised. While meeting in Hokitika, it was more convenient for DOC personnel to attend and speak to their relevant reports, rather than having to travel to Franz the next day.

22 November 2013 – Franz Josef

The Board were satisfied with the final document of the Westland National Park Management Plan Partial Review, and the process leading to this final document. The Board agreed with the amended Westland National Park Management Plan Partial Review (as presented on 24 October 2013) and recommended its approval to NZ Conservation Authority. The Board decided the Chair would attend and present the plan at the NZ Conservation Authority meeting in December.

Protection for Mokihinui was discussed, and it was decided to ask NZCA to review this at their April 2014 meeting.

An idea had been mooted by two board members for a proposed National Park in South Westland. Further information was needed for discussion at next Board meeting.

With the new DOC structure now in place, the Minister has implemented a review of the 14 Conservation Boards with the intention of realigning them to the regional structure. A meeting was held in Wellington at very short notice in October 2013. A questionnaire was circulated for Boards to complete and these along with other questions were discussed at the meeting. Terms of Reference for the review panel were seen as being very narrow.

Deputy Chair Mike Legge presented a paper at Conservation Inc Conference held in Dunedin on 17-18 October 2013. West Coast Board were the only Conservation Board to make a presentation. Mike spoke about the functional role of conservation management, Board functions, powers and scope of responsibility.

He listed some of the issues the West Coast *Tai Poutini* Conservation Board faced, such as mining and rehabilitation, high impact tourism, concessions, marine and marine protected areas.

Minister of Conservation, Dr Nick Smith opening the Conference and covered a wide range of topics – including future direction; ensuring science based approach to conservation; marine conservation; funding; restructuring and marine protection

The Board received an Official Information Request 28 September. After consultation with the Department's Legal Section, the information requested was not released under Official Information Act, Section 9(2) (a) and also Privacy Principles 10(b) and 10(e) apply.

The Board gave its support to Nelson Marlborough Conservation Board re the continuation of mountain biking in Kahurangi National Park following a three year trial, i.e. 1 May to 30 September.

28 February 2014 - Hokitika

Chair attended the NZCA meeting in December and presented draft Partial Review of Westland National Park Management Plan. The NZCA were supportive and will refer the draft plan to the Minister of Conservation for comment, prior to its final decision.

Board members were finding it hard to commit to future meetings when their future as Board members was uncertain.

C Backes and P Sheridan prepared a proposal to change the land status of public conservation land, not already in the Schedule 4 National Parks in *Te Waihipounamu* – South West New Zealand World Heritage area, to national park. The Board moved a motion that they investigate the change of areas of stewardship land to a better protected status.

28 April 2014 - Hokitika

This was the final meeting for many Board members, with only three existing members appointed to the new Board. The Minister had staggered terms, with one, two and three year terms, starting 1 May 2014 or 1 July 2014.

The Board moved to accept the finalised draft CMS Reporting document and it be submitted to the Department. It also suggested it be included in the Induction Toolkit for new Board members.

A new Community Conservation Partnership Fund had been launched and was available to community groups. Board was asked to nominate a Board member to

attend the meeting in Murchison in May, where they would assess all bids received.

STATUTORY FUNCTIONS - CONSERVATION ACT

Section 4-- This Act shall so be interpreted and administered as to give effect to the principles of the Treaty of Waitangi

The West Coast *Tai Poutini* Conservation Management Strategy has been approved pursuant to this section.

The Board periodically received reports from the West Coast *Tai Poutini* Region *Pou Kura Taiao*. These reports provide a summary of key *Kahui Kaupapa Atawhai* issues and events.

Section 6M (1) (a) To recommend the approval by the Conservation Authority of conservation management strategies, and the review and amendment of such strategies, under the relevant enactments:

The West Coast CMS became operative in April 2010 and in the past year the Board has not recommended any changes to the Authority.

Section 6M (1) (b) To approve conservation management plans, and the review and amendment of such plans, under the relevant enactments:

The Board made no such approvals in the past year.

Section 6M (1) (c) To advise the Conservation Authority and the Director-General on the implementation of conservation management strategies and conservation management plans for areas within the jurisdiction of the Board:

The Board has not received the annual CMS implementation monitoring report from the Department since September 2012.

The Board recognises that much of its perception of CMS implementation results from the routine interaction with the Department. The Status Reports at each meeting are particularly useful in this regard.

The Board can report that the West Coast *Tai Poutini* Conservation Management Strategy is being implemented effectively.

The CMS is a complex management tool which is held in the highest regard by the Board. The Board takes every opportunity to remind local authorities of its statutory significance and what it means in terms of the will of the community.

There were presently some tensions associated with the CMS implementation.

The CMS has a 10-year vision yet shorter term departmental statements of intent and financial imperatives appear to disregard the CMS.

These tensions result in some decisions which in this Board's opinion are inconsistent with CMS policies.

Some decisions relating to bach concessions are minor examples of this.

Lastly, on the matter of CMS implementation and its reporting, the restructuring of the Department has to date not addressed how it will integrate with CMS's and their territorial areas of responsibility management.

Section 6M (1) (d) To advise the Conservation Authority or the Director-General— (i) On any proposed change of status or classification of any area of national or international importance;

The Board provided advice on proposed additions to National Parks (see later reference relating to the National Parks Act).

A recommendation was also made to the NZCA that an area of the Denniston Plateau be given reserve status, and is still being pursued.

The Board has continued to attend multi-party talks, with the objective of establishing consensus on identifying such a potential reserve.

Section 6M(1) (d) To advise the Conservation Authority or the Director-General (ii) On any other conservation matter relating to any area within the jurisdiction of the Board

Land exchanges and disposals

The Board provided comment on land disposals and exchange of public conservation land using a set of Board-approved guidelines for assessing the information on these applications. The applications considered by the Board during the year included:

Proposed Disposal L & M Molloy, Harihari

This application was for the proposed disposal of 4.5 ha of conservation land on the south bank of the Wanganui River, Harihari. The Board supported this proposal as the land was of low conservation value and agreed that a fair market price should be negotiated.

Proposed Disposal, Waimunga

This proposed disposal was for an area of approximately 31.47 ha of public conservation land. The Board considered the reasons listed for disposal of this land were sound; namely the legislative requirements were being met, the modified nature of the land, and the land's history of use. The Board gave its

support but also urged that conditions be part of the sale i.e. that the adjacent forest be protected by adequate fencing; that agreed boundary exclude the small area of unmodified forest in the north west corner of the land, and that a fair market price was negotiated.

Proposed Land exchange, Punakaiki

This application was received by Punakaiki Farms Limited (N Mouat). The offer was to exchange 35.3 ha of land adjoining the Punakaiki River, for 4.1886ha of land to the north of Punakaiki Township. The land that Mr Mouat wished to acquire from the exchange adjoins Paparoa National Park. The Board supported the proposed exchange and considered the proposal to be consistent with the CMS.

Concessions

The Board provided advice to the Department on the concession applications that met the concession trigger mechanisms. The Department continued to provide fortnightly summaries of concessions received. This summary allowed the Board to be aware of concession applications that would be sent to the Board in the future and also allowed it to signal to the Department any application that it would like to see. The Board requested draft determination reports for comment which provided more information on which to base considered advice.

Due to stringent timeframes these reports were not always able to be provided. Regular reports on concessions continued to be provided by the Department for Board meetings. The Board continues to work with Permissions staff on streamlining consultation trigger mechanisms and other processes to benefit both parties.

The Board has provided advice on a range of concessions. Some of the more topical ones are included below:

South Westland Area School – hut relocation, Saltwater Lagoon

This application was for relocation of an existing hut due to the issues relating to erosion of the hut's present location. The Board agreed with the relocation. The Board advocated for special treatment of the concession, as it considered that an educational resource, which is consistent with the CMS – “Section 3-2 Relationship with People and Organisations Policies: appropriate use of public conservation lands as an educational resource should be encouraged and facilitated”. A reduction in fee was suggested by the Board. The Department's response confirmed an excellent outcome was achieved, with the fees being waived.

Buller Coal Limited –intention to grant an easement for widening and use of the Whareatea Road, Denniston Plateau

The Board had previously made a submission against the granting of resource consent for Buller Coal to be able to mine for coal on the plateau. The easement

concession was directly associated with the proposed coal mine, providing a haul road for the coal to be removed from the Plateau.

The Board was concerned with the proposed destruction of the unique sandstone pavement environment and its associated ecosystem, the impossibility of rehabilitation of the site and the proposals for controlling acid mine drainage. They also considered open cast mining to be an inappropriate use of the Denniston Plateau because of the assessment of and intention for the landscape described in the CMS. The Board's advice was to decline this application and they requested to view the final report to the decision-maker.

Arnold Contracting – Tatare Stream, Gravel extraction

This application was to remove large rocks from the Tatare Stream. Board suggested this would alter the flow dynamics of the stream. By altering the dynamics upstream there was the possibility of increasingly significant flow issues further downstream, with consequences such as increased erosion and flooding. Board were also concerned on the impact this operation would have on whoo population. The Board requested further information be supplied by the applicant.

Franz Josef Glacier Guides, Helicopter landing Luncheon Rock

In this application the concessionaire was seeking a longer term for their concession. As the Westland National Park Management Plan is currently under partial review, the Board considered that a concession for a period of one year should be granted until the partial review was completed. This would allow for any recommendation relating to access concessions to be provided to the concessionaires.

Franz Josef Glacier Guides – Concession variation

This was an application for a variation to allow abseiling in the Franz Josef glacier valley. The Board recommended that the concession be granted for one year only, and was subject to review following the interim concession period. The Board considered this as a new concession application, rather than a variation.

A total of 27 bach applications have been granted by the Department this year, made up of one new application and 26 re-issues. The Board made comment on all of these applications.

Access Arrangements

The Board also provides advice on access arrangements applied for under the Crown Minerals Act 1991. As these concern access to public conservation land the applications needed to be considered under the Conservation Act 1987 and therefore the Board is consulted. The applications on which the Board provided advice included:

New Creek Mining – Orikaka Ecological Reserve

The initial application submitted was referred back to the applicant as further information was required relating to the impacts of the operations on water quality and local species management. The Board found the findings outlined in the Departments report, were too subjective. The Board believed the Orikaka Ecological Reserve should continue to be protected and that mining was inconsistent with the conservation purposes for which the land was held. Low altitude forests are poorly represented in the Buller and Reefton Ecological Districts and are important habitats for native birds. The Board's advice was to decline this application.

Buller Coal Ltd – Denniston Plateau, Access Arrangement Variations

The Board had concerns relating to the additional drilling programme proposed by this application. The Board was aware of the higher-level discussions taking place regarding the development of a 'reserve' and/or 'protected' area and considered that this should be taken into consideration when applying for the additional drilling sites. Board were primarily concerned with the damage to flora and fauna that would occur during the drilling operation. The Board provided advice that the application should be declined.

Petroleum Creek Ltd – Blair Road, Kotuku

The application related to drilling (exploratory or otherwise) for petroleum. The Board felt it was inappropriate to allow prospecting on the conservation estate, particularly when there were conservation values specific to the area.

The Board's advice was to decline this application. It was noted that there was a significant footprint for this proposed operation, which did not protect the natural environment and cannot be remedied or mitigated by the application.

Visitor Assets

The development of visitor assets continued to interest the Board. Much work was carried out over the West Coast Region. The Conservation Board received regular reporting on progress with capital projects at its two monthly meetings.

Heaphy Track

Funding was approved for upgrading sections of the track over the next two years to bring up the Great Walks stand. Design work was being carried out for the replacement of the 26 bunk James MacKay Hut to a 28 bunk hut. The new hut is expected to be completed by late September 2014.

The main objective of this programme of work is to encourage greater use of the Heaphy Track and ensure that the track, and bridges meet the service standards for a Great Walk.

The third year of the Heaphy Track mountain bike trial concluded at the end of September. Visitor booking data shows that a considerable number of people are using the track during the mountain bike season i.e. 1 May – 30 September, with numbers steadily increasing.

Manson-Nicholls Memorial Hut

A business case was submitted for the replacement of the Manson-Nicholls Memorial Hut at Lake Daniels. The scope of the project had been expanded to establish a camping area beside the hut and upgrade the composting toilets and waste water treatment system at the site. Lake Daniels has become a popular tramping destination. The replacement of the hut together with improved camping area and track upgrade will encourage more families and young people to tramp to the lake and enjoy the high biodiversity values of the area. Unfortunately this case had to be deferred to allow further information to be gathered on the potential use of the area in the future and a decision made on the appropriate size of the replacement hut. The business case will be resubmitted in 2017/18.

Hokitika Gorge extension

Another business case was submitted for the extension of the walking track up the true left (south bank) of the Hokitika Gorge. The project proposal was for the construction of a new 83m suspension bridge near the top of the gorge and the inclusion of three new viewing areas to allow visitors to enjoy the unique and different views of the gorge. This project proposal was modified to include an extension of the existing walking track and the construction of one new viewing platform to allow visitors to see up the gorge.

Welcome Flat Hut

The refurbishment of the Welcome Flat hut was completed and the department celebrated the completion of the project on 9 November 2013.”

Lake Matheson

All work associated with the construction of the new public toilets, associated waste water disposal system and car park at Lake Matheson were completed. The site received a Green Flag Award for excellence in January 2014. Green Flag is an international award scheme that recognises best practice in park management

Ship Creek *Tauparikaka*

The walking tracks and interpretation at Ship Creek *Tauparikaka* were upgraded. This site also received a Green Flag Award which acknowledged the quality of detail and planning that had gone into the upgrade and management of this Icon destination.

Species and Other Issues

The Board received regular species updates in the Status Report which is presented at every meeting, including information on Powelliphanta snails, freshwater fish and inanga, bats, kiwi species, marine mammals, mohua, kea, whio protection, some plant species and predator control.

Section 6M Functions of Boards (1) – (f) To liaise with any Fish and Game Council on matters within the jurisdiction of the Board:

The two organisations exchanged copies of minutes and agendas and issues of interest were noted at Board meetings.

Section 6M Functions of Boards (1) – (g) To exercise such powers and functions as may be delegated to it by the Minister under this Act or any other Act.

The Board was not delegated any such powers or functions.

Section 6N Powers of Boards

- (1) Every Board shall have all such powers as are reasonably necessary or expedient to enable it to carry out its functions.
- (2) Without limiting the generality of subsection (1) of this section, each Board may
 - (a) Advocate its interests at any public forum or in any statutory planning process; and
 - (b) Appoint committees of members and other suitable persons, and delegate to them functions and powers.

Pursuant to the above and in accordance with our CMS, the Board used its powers to advocate for conservation both on and off public conservation land and for both local and national conservation issues. It also maintained two committees and a series of topic leaders.

Conservation Advocacy

The Board is on the mailing list of all West Coast local authorities and received copies of some notified resource consent applications, proposed changes to or reviews of district plans, Long Term Council Community Plans and reports on other regional issues or programmes. It used its resource consent trigger mechanisms to identify those matters likely to have significant impacts on conservation values and to decide whether or not to become involved.

A submission was made on the West Coast Regional Council proposed changes to Regional Policy Statement

The Department kept the Board informed about planning issues through regular reports at Board meetings.

Other Conservation Issues

The Board made Submissions on the following:

National Policy Statement for Freshwater Management Policy 2011

Conservation Services Programme Annual Plan 2014/15

Board member Dr M Legge provided information papers to Board members on Sodium Nitrite and information relating to anticoagulant pest control agents.

DOC Restructuring

The Board has major concerns over the role Boards, their conservancies and CMS's will play in the future under the new structure. The absence of considerations of conservancies and CMS's in the early planning of the restructuring may create difficulties in enacting current legislation.

Appointment of Committees

With the pending Board restructure, committees were left as status quo.

<u>Committee</u>	<u>Membership</u>
Concessions	Michael Legge (Chair), Clare Backes, Doug Baker, Jane Jones, Terry Scott, Kim Thomas, Stewart Robertson (ex officio)
Planning	Stewart Robertson (Chairperson), Jane Jones, Kim Thomas, and Clare Backes

Special Interest Topics

Historic Heritage and Appreciation

Jane Jones and Kim Thomas

Science and Biodiversity

Michael Legge and Doug Baker

Tangata Whenua Liaison

Terry Scott

OTHER RESPONSIBILITIES UNDER CONSERVATION ACT

Co-opting Members of the Board

Paula Sheridan was co-opted on to the Board at the 21 September 2012 meeting, and was to continue in this role until new Board announced.

BOARD FUNCTIONS UNDER THE NATIONAL PARKS ACT 1980

Section 47 Procedure for preparing and reviewing management plans

The Westland National Park Management Plan Partial Review has continued to be a major topic at Board meetings throughout the year. Stewart Robertson and Mike Legge were on the hearing panel which involved two days of submitters addressing the panel and speaking to their submission. They attended several meetings around this topic which is ongoing. Stewart attended the NZCA meeting in December to present the final text.

LIAISON

General Comment on Liaison

The Board considers that contact by members of the West Coast *Tai Poutini* Conservation Board with the community is very important. The webpage has been used to good advantage with contact details for members, meeting agendas, confirmed minutes and the Status Report from each meeting being provided. The Board's annual report and the West Coast Conservation Management Strategy can also be accessed on this site.

Board members also have contact with a broad range of people, community groups and organisations. Several Board members maintain contact with conservation groups, recreation groups, the tourist industry, and agricultural organisations. Board members either attend meetings or receive minutes and agendas and report back to Board meetings about any concerns of interest to the Board.

There is a representative from the Board at the Stockton Environmental Consultative Group meetings, and one Board member has regular contact with the executive of the local Federated Farmers, which keeps the Board informed of relevant issues.

Public forums continue to be offered at each Board meeting with half an hour being set aside for members of the community to raise conservation issues with the Board. Unfortunately no members of the public used this opportunity of address the public forum over the last year.

The media on the West Coast were sent copies of the Board agendas and meeting papers, and were welcome to attend all Board meetings. A press release from the Board after meetings is seen as an important element of public relations

Other Boards and the NZCA

Liaison with neighbouring Boards was maintained principally through the exchange of minutes and agendas.

Although NZCA liaison person Dr Gerry McSweeney was unable to attend Board meetings, he is in regular contact with the Board Chair.

Community

The West Coast is a region of small communities. Board members are often well known in their local communities and have regular contact with members of the public. Where possible the Board tries to meet with local community groups while on field inspections.

Board members are invited to join in activities organised by the Department and other conservation groups to celebrate national events. This gives members a chance to interact with other groups and to learn more about the Department's work.

Local Government

The Board appreciates the opportunities to meet with representatives of the four local Councils as there are a number of regional issues in which it is interested. The Board has had regular contact with all territorial authorities through its concerns about outstanding natural features and landscapes, significant natural areas, proposed reviews of district plans and getting involved in consultation over the councils' Long Term Council Community Plans.

Iwi

The Board is working to further develop its relationship with the Papatipu Runanga on the West Coast and Te Runanga o Ngāi Tahu. Two members of the Board are nominated by Ngāi Tahu, as required under the Ngāi Tahu Settlement Act 1998. They provide input on iwi issues and a Maori perspective to other issues. *Pou Kura Taiao* provides a report when time permits.

MESSAGE FROM CHAIR – STEWART ROBERTSON 1 July 2013 - 28 April 2014

The past year has been a busy one for the Board. Working with the newly fashioned management structure of the Department is still sorting itself out. However the excellent relationships which exist between Board and Department staff provide the best environment for these times.

Our Board Servicing Officer Mary-Anne Thorpe is to be thanked for her effective and good natured work on our behalf.

Recent changes to Board membership are also significant with three members being re-appointed and seven new members.

We are losing the following five members and thank them wholeheartedly for their commitment to the Board:

Clare Backes who chaired the Board for two years and has left to travel extensively in South America. Clare was a strong and effective advocate for reclassifying valuable stewardship land.

Doug Baker who had a background in hunting and bushwork and in his time on the Board received an award for voluntary predator control work.

Kim Thomas who lived in Westport and kept us informed about events up there (and there were a lot!).

Jane Jones who in her one term on the Board, initiated rigorous debates. She was largely responsible for fashioning the new CMS reporting template.

Stewart Robertson - six and a half years on Board and Chair following Clare Backes resignation.

Featuring large in the work done over the last year is the completion of the partial review of the Westland *Tai Poutini* National Park Management Plan. This represented an enormous commitment to accurately reflect the views of the public on access to the Westland glaciers and their valleys.

Another outstanding achievement was to prepare a CMS reporting template which should serve well for the future use by this Board (and perhaps others?). The task of simplifying CMS reporting has troubled the Board for several years.

Departmental changes together with the recommendations in the recent review of Conservation Boards do divert attention, but the main focus of the Board continues to be the implementation of our CMS as required by statute.

Fortunately this Board's members are involved in their communities, in touch with their views, and work hard between Board meetings. It's a privilege to serve with them.



Stewart Robertson
Chairperson
01.07.13-28.04.14

MIKE LEGGE 29 April 2014 – 30 June 2014

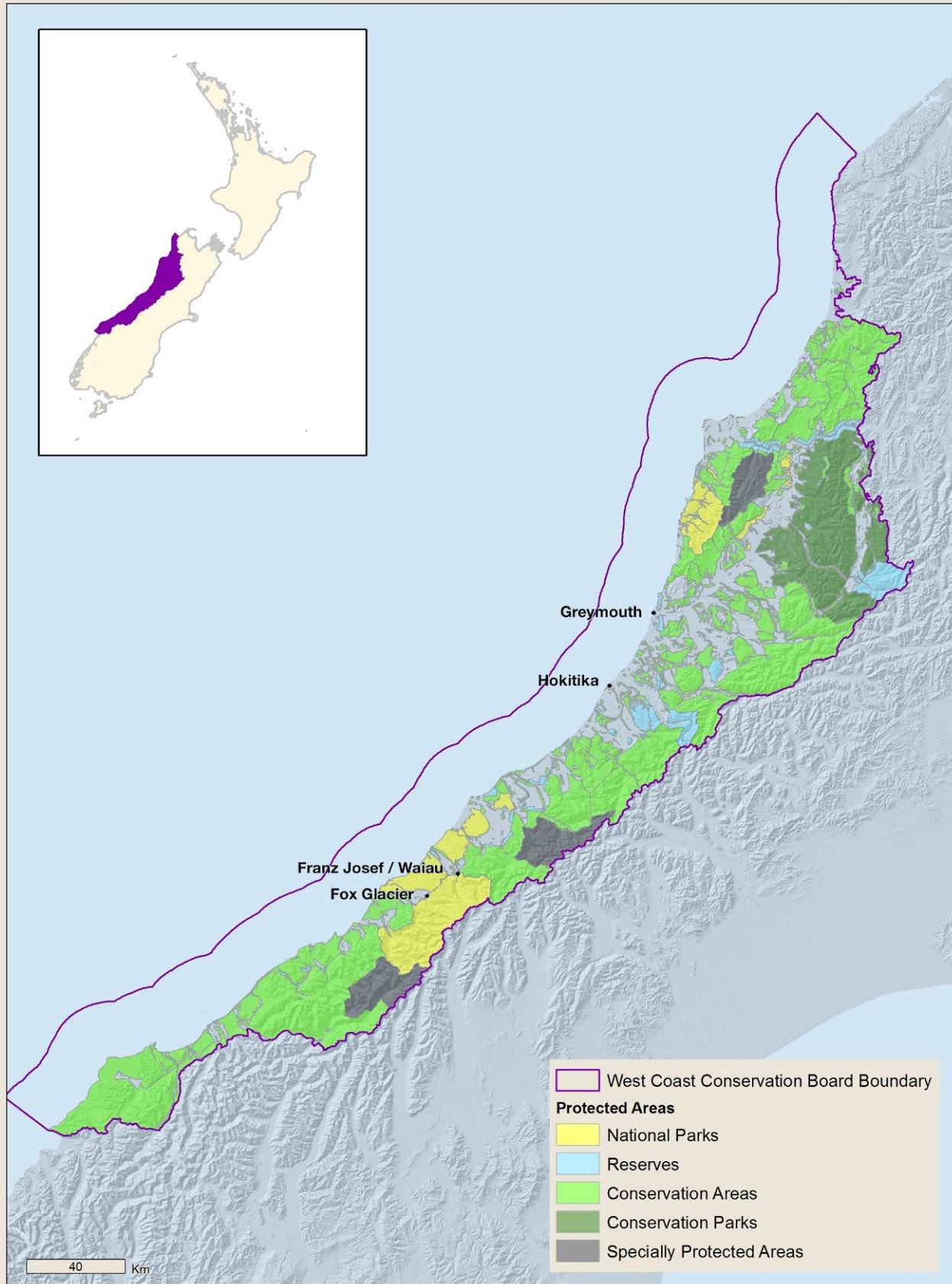
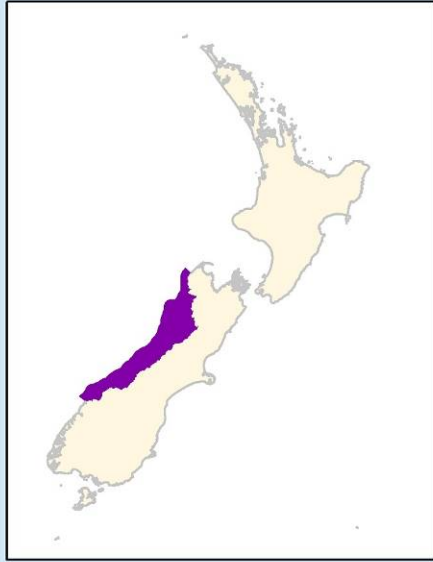
As the incoming Chair of what effectively was a new Board it was a challenge to consider how best to maintain the continuity of the previous Board, the excellent relationships with the Department of Conservation and ensure that the new Board members understood the functional roles of the Conservation Board. The shift from Deputy Chair of the previous Board to Chair of a newly appointed Board is significant and I would like to acknowledge the work Mary-Anne Thorpe (Board Support Officer) undertook to make the transition as seamless as possible.

As Stewart has indicated, there were many skills brought to the Board table by the previous Board members and I wish to acknowledge the work the outgoing Board members undertook to ensure a well informed and active Conservation Board. Although Stewart has not indicated in his part of the report, I would like to acknowledge his integrity and skills as a Chair and his passion for ensuring details were correct especially in planning and related processes.

The appointments of the new Board members was staggered and this represented a problem of when best to hold the first Board meeting, which was eventually convened in July and will be reported in the next Annual Report.

A handwritten signature in black ink, appearing to read 'M. Legge', with a large, sweeping flourish extending to the right.

Mike Legge (Dr)
Chairperson
29.04.14-30.06.14



-  West Coast Conservation Board Boundary
- Protected Areas**
-  National Parks
-  Reserves
-  Conservation Areas
-  Conservation Parks
-  Specially Protected Areas

40 Km

NZGD 2000 New Zealand Transverse Mercator
 Not for publication nor navigation
 Crown Copyright Reserved.
 © Geographix
 © CNES 2004-2010 Spot Image
 Scale at A4 = 1:2,000,000
 Produced by: aevans
 Date Produced: 28-Aug-14
 DOC, Geospatial Services



West Coast *Tai Poutini* Conservation Board Boundary



newzealand.govt.nz

File path: \\chccosvr1\gis5\GIS\Projects2014\SouthIsland\R49700_WestCoast_ConservationBoard\WestCoast_ConservationBoard_20140827.mxd