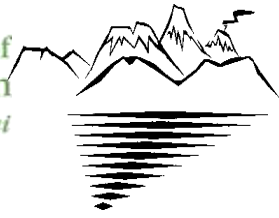
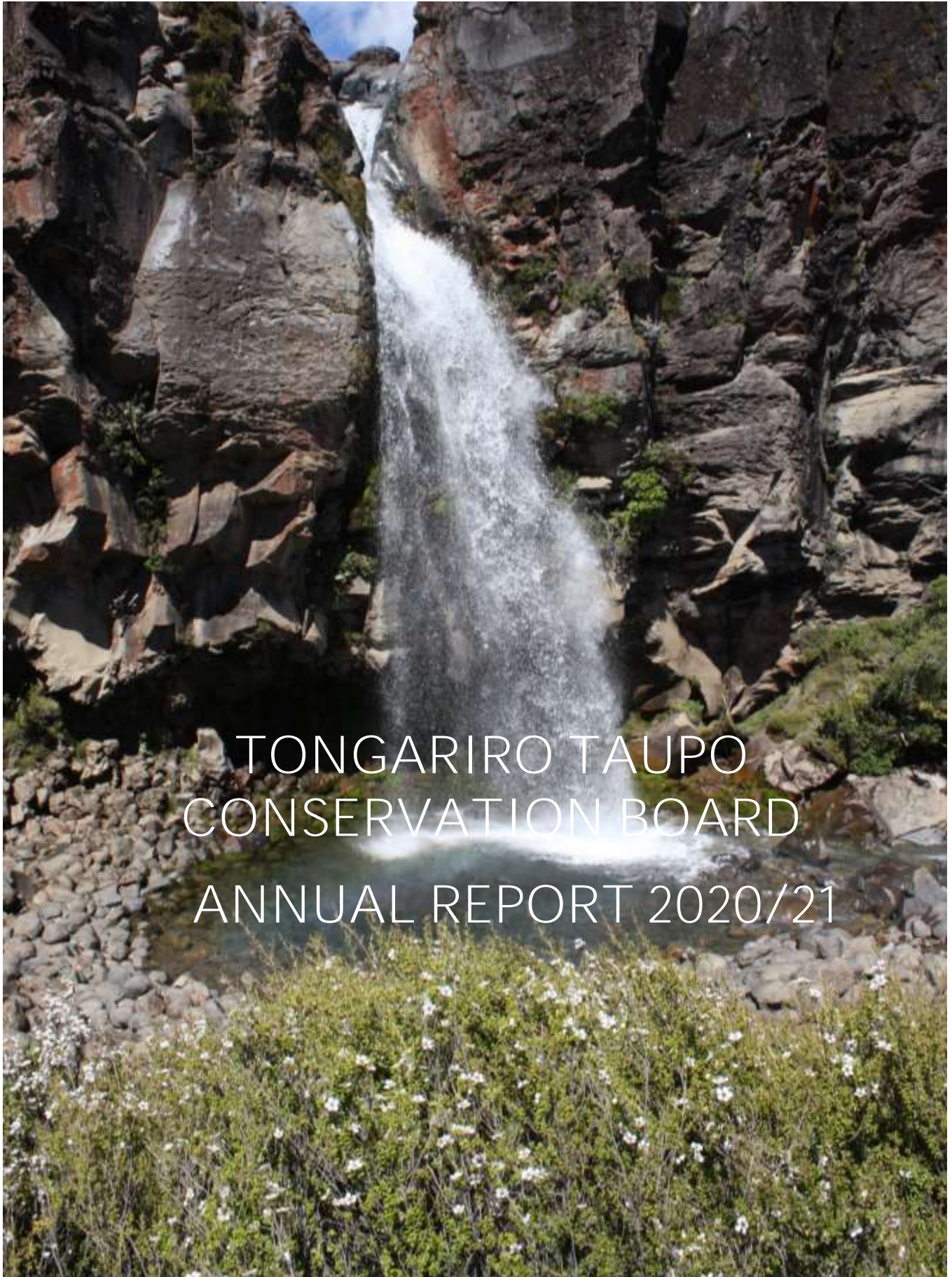




Department of
Conservation
Te Papa Atawhai



Tongariro/Taupo Conservation Board Meeting
Te Poari Papa Atawhai o Tongariro Taupo



TONGARIRO TAUPO
CONSERVATION BOARD
ANNUAL REPORT 2020/21

Tongariro Taupo Conservation Board

Annual Report 2020/21

Presented to the New Zealand Conservation Authority pursuant to
Sections 6 (0) of the Conservation Authority Act 1987

Published by:

Tongariro Taupo Conservation Board

C/- Department of Conservation

37 Motutaiko Street

PO Box 523, Taupo 3330

This report is presented to the New Zealand Conservation Authority as required by the Conservation Act and distributed to interested parties. Members of the public are welcome to attend Conservation Board meetings. If you would like more information on the Tongariro Taupō Conservation Board please see the website www.conservationboards.org.nz or contact the Board Support Officer, at the Department of Conservation in Taupo phone (07) 376 0072 or e-mail tongarirotaupoconservationboard2@doc.govt.nz.

CONTENTS

1	Chairperson's Report	3
2	Introduction	5
3	Conservation Board Region	6
3.1	Conservation Features of the Area	7
4	Board Functioning	7
4.1	Board Functions under Section 6m of the Conservation Act 1987	7
4.2	Powers of the Board Under Section 6n of the Conservation Act 1987	8
4.3	Board Functions under Section 30 of the National Parks Act 1980	8
4.4	Board Membership	8
4.5	Member Profiles	9
4.6	Board Meetings	11
4.7	Attendance	11
4.8	Field Trips and Site Inspections	12
4.9	Board Committees	12
4.10	Department Involvement in Board meetings	13
4.11	Board Work Plan	13
5	Statutory Activity	13
5.1	Conservation Management Strategy (CMS)	13
6	Advice and Advocacy	13
6.1	Authority Liaison	14
6.2	Department Advice	14
6.3	Community Advocacy and Involvement	14
6.4	Community Visibility	14
6.5 D	District and Regional Council Advocacy and Advice	14
	Appendix 1 – Annual Work Plan	15

1 Chairperson's Report

As for most people in Aotearoa, 2020 was a difficult year and the pandemic and its impact on our community was constantly in the background which created a level of uncertainty. But for all that it was one in which the Board charted its own direction in a number of ways.

First up was the loss of our Chair of six years, John Bishara. John had completed three terms on the board and was not reappointed, leaving the members feeling the loss of a leader of such standing in the community and a senior kaumātua of Ngāti Tūwharetoa. He led the Board through the period following on from the review of conservation boards and got the Board to where it stood in July 2020. The members have really felt the loss of John's wisdom over the last twelve months.

The Tongariro Taupō Conservation Board (the Board) decided to focus its work plan down to a very few priorities. The top priority was to develop and enhance relations with the four main Iwi of the rohe. Its plan was to meet with Ngāti Tūwharetoa, Uenuku, Ngāti Rangī and Ngāti Haua at least once during the year. This ambition was enhanced by the Statutory appointment of Te Ngaehe Wanikau as a representative of Ngāti Tūwharetoa and Dave Milner from Ngāti Rangī.

An early highlight was meeting with representatives of Uenuku at National Park Township. This included both an informal discussion, and a visit to the Pou-whenua in the village. Surprising to the Board was learning that the Office of Treaty Settlements was proposing that Uenuku and Ngāti Haua were only being offered a shared seat on the Board as part of their settlements. The Board resolved to write to the Minister to advocate the importance of a full seat for all four of the significant Iwi in its rohe. At the same time, it offered a co-opted position on the Board to a representative of both Uenuku and Ngāti Haua, until such time as they both have their own Statutory seats, through their Settlement. The Board was delighted when both accepted the invitation.

The second significant step the Board took this year was to agree to adopt a co-chair model to better reflect partnership. The Māori members of the Board were asked for their recommendations on how to give effect to this, and on their recommendation, it was agreed that the co-chair position would be filled by a statutory or co-opted member from the Iwi in who's rohe the Board was meeting. This new co-governance model will be fully implemented in the 2021/22 year.

Lack of progress and resources to progress the review of the out-of-date Conservation Management Strategy (CMS) continues to be a real frustration to the Board. It is accepted that there are many other regions with out of date plans, but Tongariro Taupō is an area with huge pressures on quite fragile and vulnerable ecosystems. Tongariro National Park is a dual World Heritage Site, so we are very concerned that planning documents at all levels are out of date by some years – which compromises the World Heritage status. The decisions to centralise both planning and other specialist services has had an ongoing negative impact on the management of protected lands. The lack of resources has had a huge impact on management planning and public input. In 2021/22, the Board will look at ways of working with its Iwi partners to progress a proper review of the plans for protecting nature in its rohe and facilitating its enjoyment.

A further frustration relates to the fact that there is no direct link between the CMS and the Department's budget. The Board is adamant that it needs to be consulted in respect of priorities – to give effect to the CMS – but to date this has not been happening. An undertaking has now been given by the Director General and Operations Director that this will happen in future.

As is common for other Board's, a very restricted Board budget stops us getting both independent advice and having the time and resources to investigate and visit areas of concern. For example, the Kaimanawa Conservation Park is seriously threatened by deer browsing and now beech die back. It is an area where helicopter access is necessary to review the extent of the problem, but so far this has been precluded by a lack of funds. It is recognised that there are limited funds available to the Department, but that is a further reason for proper planning in the management of such sacred taonga and for community input through the conservation boards.

Another priority for the year, was to take the opportunity to use the collapse of international tourism to rethink the way visitor use is managed, especially in Tongariro National Park, where numbers were threatening to overwhelm capacity and seriously impact on both natural and cultural/spiritual values, especially in a dual World Heritage Area. Progress with this has been disappointing as the Board is very much captured by the actions being taken by the Department and other parts of Government. Most of the issues of concern to the Board are also of concern to our Iwi partners and it is hoped that we can support them to see a review of policy.

I would like to recognise and thank the wonderful members of the Board. The ability to share our passion, knowledge and wisdom gives the Board a real potential to further both nature conservation and the implementation of the principles of the Treaty of Waitangi. Without going through the huge contributions of many members, I would like to recognize the contribution of two members not reappointed to the Board at the end of the year. The first is our Deputy Chair, Chloe Walker who had only completed a single term. Chloe brought a range of management, commercial, land use and conservation skills to the Board and was a key member over her three years. The other is Peter Zimmer, who over his 7 years on the Board provided essential experience on outdoor pursuits like climbing. He also took a wide interest in community representation and developing our partnership with Iwi. Although he had completed two full terms his special experience will be missed.

I would also like to thank the Department staff that do achieve so much in the Board's rohe and provide advice to it. I would especially like to note the contribution of our Board Support Officer, Jade Pederson and Statutory Manger, Libby O'Brien for their support during the year and finally, Damian Coutts, Operations Director for his support and positive relationship with the Board.



Mike Britton
Board Chairperson

2 Introduction

Welcome to the 2020-2021 Tongariro Taupō Conservation Board Annual Report.

Section 6(O) of the Conservation Act requires conservation boards to provide the New Zealand Conservation Authority (the Authority) with an annual report as soon as practical after 30 June each year. In recognition of this requirement the Tongariro Taupō Conservation Board submits this annual report.

Conservation boards are appointed by the Minister of Conservation under section 6(P) of the Conservation Act 1987. Board functions are outlined in section 6(M) and the powers, which enable the conservation boards to carry out those functions, are under 6(N) of the Act.

Conservation boards are independent advisory bodies, established by statute. They represent the community and offer interaction between communities and the Department of Conservation (the Department), within their area of jurisdiction.

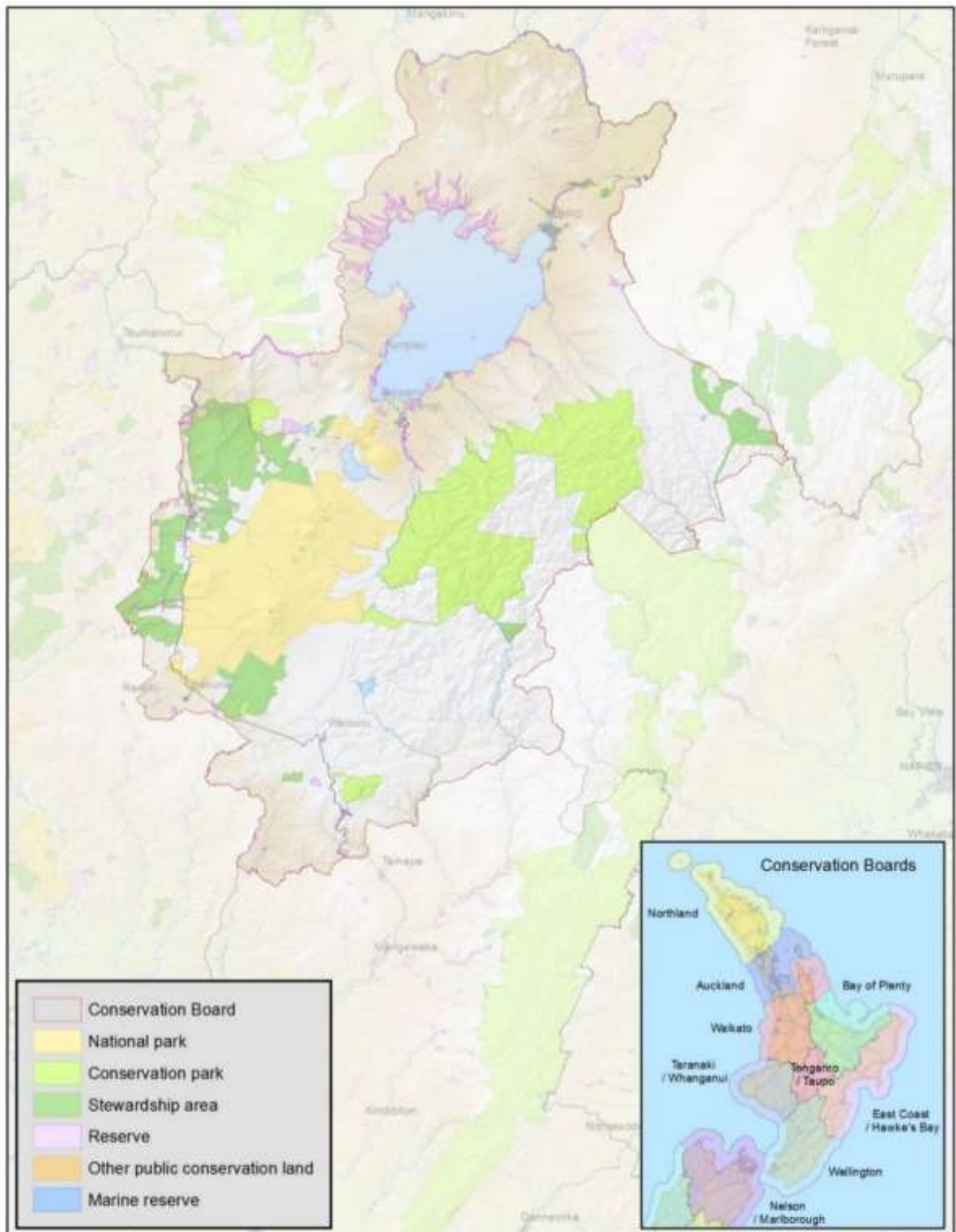
Conservation boards have several statutory roles under various Acts including:

- the recommendation of the Tongariro Taupō Conservation Management Strategy (CMS) to the Authority for approval
- advising the Department and the Authority on how conservation management strategies and plans will be put into practice
- reporting on the implementation of the CMS
- the approval of Conservation Management Plans (CMP)
- the recommendation of National Park Management Plans (NPMP) to the Authority for approval
- advising the Department and Authority on conservation matters, and proposed changes to status of land of national and international significance
- liaising with the regional Fish and Game Council on conservation matters
- carrying out other powers delegated by the Minister of Conservation, the Conservation Act or any other Act.

Conservation boards also have several functions under section 30 of the National Parks Act 1980. These functions include recommending the review or amendment of NPMPs and recommending approval of these plans by the Authority.

3 Conservation Board Region

The Tongariro Taupō Conservation Board's area of jurisdiction covers an area of approximately 780,000 hectares, with approximately 219,000 hectares of Public Conservation Land.



Tongariro / Taupo Conservation Board

Tongariro National Park lies within the Board's jurisdiction.

A large number of issues which are of interest to the Board include:

- Ecosystem management and management of plant and animal species such as kiwi and whio.
- Forest canopy collapse such as in the Kaimanawa Conservation Park.
- Management of recreational facilities - in particular the Tongariro Alpine Crossing, which continues to be one of the most traversed alpine tracks in the world with a significant international audience creating unique management challenges for the Department.
- Management of historic sites such as Opepe Historic Reserve.
- Concession activities and, in particular, those relating to recreation and tourism activities at key sites such as Tongariro National Park, Huka Falls and Five Mile Bay.

3.1 Conservation Features of the Area

The main features of Public Conservation Land and Waters within the Board's boundaries are:

- Tongariro National Park – 79,669 ha
- Kaimanawa Forest Park – 74,532 ha
- Kaweka Forest Park – 39 ha
- Scenic Reserves – 8,762 ha
- Historic Reserves – 186 ha
- Recreation Reserves – 1,192 ha
- Ecological Area – 2,140 ha
- Scientific Reserves - 342 ha
- Stewardship Areas – 50,674 ha

Te Urewera, Whanganui National Park and Whirinaki Te-Pua-a-Tane Forest adjoin the Board's area of jurisdiction

Tongariro National Park is registered on the New Zealand World Heritage List.

4 Board Functioning

4.1 Board Functions under Section 6m of the Conservation Act 1987

The functions of the Board are:

- 1) To recommend the approval by the Authority of conservation management strategies, and the review and amendment of such strategies, under the relevant enactments
- 2) To approve conservation management plans, and the review and amendment of such plans, under the relevant enactments
- 3) To advise the Authority and the Director-General on the implementation of Conservation Management Strategies and Conservation Management Plans for the area within the jurisdiction of the Board
- 4) To advise the Authority or the Director-General
- 5) On any proposed change of status or classification of any area of national or international importance; and
- 6) On any other conservation matter relating to any area with the jurisdiction of the Board

- 7) To liaise with any Fish and Game Council on matters within the jurisdiction of the Board
- 8) To exercise such powers and functions as may be delegated to it by the Minister under this Act or any other Act.

4.2 Powers of the Board under Section 6n of the Conservation Act 1987

- 1) Every Conservation board shall have all such powers as are reasonably necessary or expedient to enable it to carry out its functions.
- 2) Without limiting the generality of subsection (1), each conservation board may –
 - a) Advocate its interests at any public forum or in any statutory planning process; and
 - b) Appoint committees of members and other suitable persons, and delegate to them functions and powers.
- 3) The power conferred by subsection (2)(a) shall include the right to appear before courts and tribunals in New Zealand and be heard on matters affecting or relating to the Board's functions.

4.3 Board Functions under Section 30 the National Parks Act 1980

- 1) to recommend management plans, and the review or amendment of such plans, for parks within the jurisdiction of the Board in accordance with sections 45 to 47:
- 2) to consider and determine priorities for the implementation of management plans for national parks:
- 3) to make recommendations to the Minister for the appointment of honorary rangers under section 40:
- 4) to review and report to the Director-General or the Authority, as appropriate, on the effectiveness of the administration of the general policies for national parks within the jurisdiction of the Board:
- 5) to give advice to the Director-General or the Authority—
 - a) on the interpretation of any management plan for a park; and
 - b) on any proposal for the addition of land to any national park or the establishment of a new national park; and
 - c) on any other matter relating to any national park, —within the jurisdiction of the Board.

4.4 Board Membership

The number of member positions include the statutory position held by Te Ariki Sir Tumu Te Heuheu and were appointed by the Minister of Conservation for the reporting year.

Two members' term of office expired on 30 June and there were two new members appointed, Karen Grimwade and Dave Milner. Mike Britton was reappointed to the Board as Chair.

The following table lists the membership of the Board between 1 July 2020 and 30 June 2021 and their term of office.

Board member	Area	Term start	Term end	Term served
Te Ariki Sir Tumu Te Heuheu	Tūwharetoa	1998	Life Member	22
Mike Britton	Wellington	2014	2023	7
Peter Zimmer	Ruapehu	2014	2021	7
Georgina (Honey) Winter	Raetihi	2018	2021	3
Hinemoa Wanikau	Turangi	2018	2021	3
Chloe Walker	Atiamuri	2018	2021	3
Te Ngaehe Wanikau	Turangi	2019	2022	2
Amoa Hawira	Raetihi	2019	2022	2
Murray Wilson	Ruapehu	2019	2022	2
Dave Milner	Masterton	2020	2023	1
Karen Grimwade	Auckland	2020	2023	1

Table 1: Board membership

4.5 Member Profiles

Mike Britton, Chair, Wellington

Mr Britton is Chief Executive of the Environmental Law Initiative Trust. He has experience in drafting National Park and Conservation Acts, creating management plans, policy development and acting in committees. He has previously been involved in managerial and director roles within the Fish and Game Council and Forest and Bird Protection Society. His outdoor recreation interests are tramping, walking, restoration and fishing.

Te Ariki Sir Tumu Te Heuheu, Statutory Position, Turangi,

Sir Tumu is Paramount Chief of Ngāti Tūwharetoa and is a direct descendant of Horonuku Te Heuheu who in 1887, as Paramount Chief of Ngāti Tūwharetoa, *tukua* the mountains of Tongariro to the people of New Zealand. He is Chairperson of Tūwharetoa Māori Trust Board, Lake Taupō Forest Trust, and Lake Rotoaira Forest Trust.

He sits on many national boards as either chair or a member. In the 2004/2005 honours list he was made a Distinguished Companion of the New Zealand Order of Merit. As New Zealand's delegate to the UNESCO World Heritage Committee he was elected Chairperson in 2006.

Peter Zimmer, Board Member, Ruapehu

Mr Zimmer works as group support officer for New Zealand Land Search and Rescue. He has a practical background in farming and a degree in agricultural science. He has worked for over 20 years as an independent guide and instructor in the outdoors. His outdoor recreation interests are mountaineering, skiing, mountain biking, kayaking and trout fishing. As a hobby he enjoys researching and exploring historical, cultural, and geological sites in and around Tongariro National Park.

Georgina Winter, Board Member, Raetihi

Mrs Winter is an Independent Business and Project Management Consultant. She is the Chair of Ruapehu Health Ltd (General Practice) Board of Directors and holds qualifications in Māori and Administration, Mātauranga Māori and Business Management. Mrs Winter is passionate about the wellbeing of her community, her marae and iwi. Conservation and addressing climate change ranks high on her list of priorities. She enjoys gardening and spending time with her family.

Hinemoa Wanikau, Board Member, Turangi

Mrs Wanikau works in administration management / governance servicing for Te Kotahitanga Ngāti Tūwharetoa, the Post Settlement Governance Entity. She has extensive experience and acumen in business administration and management, environmental planning, and review of policies and processes between hapu and government authorities. She has an interest in geothermal activity and water quality.

Chloe Walker, Board Member, Atiamuri

Mrs Walker works as a consultant for the Tutukau Group and has a background in business and policy development. She is currently a board member for the Taupō Chamber of Commerce and has been a council representative in Taupō. She holds a Bachelor of Arts in International Politics. Mrs Walker enjoys gardening, fishing and boating.

Te Ngaehe Wanikau, Board Member, Turangi

Mr Wanikau is a nominee of Te Kotahitanga o Ngāti Tūwharetoa. He has experience in environmental policy, planning and analysis, and consultation with local governments and authorities. His particular interest is in providing a cultural perspective to conservation board deliberations. His outdoor recreation interests are fishing and food gathering.

Amoa Hawira, Board Member, Raetihi

Mrs Hawira is currently studying towards an Undergraduate Degree in Environmental Management and has a strong community and cultural presence in the rohe.

She is working for Ngā Waihua o Paerangi (formally Ngāti Rangi Trust) within the Taiao unit as a Kairangahau Taiao (Environmental Researcher), and is heavily involved with Para Kore Inc. She has affiliations to Ātihaunui a Pāpārangi, Uenuku / Tamakana / Tamahaki, Ngāti Tūwharetoa, Ngāti Kahungunu and Ngāti Rangi.

Murray Wilson, Board Member, Ruapehu

Mr Wilson is a District Councillor for the Ruapehu District Council National Park Ward and National Park Community Board. He has experience in community consultation, advocacy, and projects on public land.

Dave Milner, Board Member, Masterton

Mr Milner is a Ngāti Rangi nominee. He has excellent engagement with hapū/iwi and hapori whānui, and skills in influencing engagement for kaitiaki and hapū/iwi in policy. He has deep understanding, and respect for, Mātauranga Māori.

Karen Grimwade, Board Member, Auckland

Karen is a researcher and writer, with special interest in local history. She has previously worked for the Department of Conservation in Tongariro in various roles. She has a degree in History and a Masters in Cultural Heritage Management. Karen is a member of the Project Tongariro Executive committee and puts conservation at the head of her list of interests. She is a long time Ruapehu skier, a regular tramper, an aspirational gardener and an ex-volunteer firefighter.

4.6 Board Meetings

The Board held six meetings during the reporting period.

Board meeting date	Meeting location and venue
15 July 2020	Doc office, Taupo
17 September 2020	Doc Office Turangi
19 November 2021	The Park Motel, National Park Village
28 January 2021	Te Pae Tata, Ohakune
25 March 2021	Doc Office, Taupo
27 May 2021	Doc Office Turangi

Table 2: Board meeting dates and location

4.7 Attendance

The table below summarises the number of Board meetings attended by members out of the total number of meetings held during the year.

Members attended other meetings and events in their role as Board members, including subcommittee meetings and representative roles.

Board member	Board meetings
Te Ariki Sir Tumu Te Heuheu	-
Mike Britton	6/6
Peter Zimmer	5/6
Georgina (Honey) Winter	5/6
Hinemoa Wanikau	3/6
Chloe Walker	6/6
Te Ngaehe Wanikau	4/6
Amoa Hawira	5/6
Murray Wilson	6/6
Dave Milner	4/6

Karen Grimwade	6/6
----------------	-----

Table 3: Board meeting attendance

4.8 Field Trips and Site Inspections

Field trips are an excellent opportunity for Board members to become more aware of conservation issues within their region.

Field trip date	Field trip destination and purpose
18 November 2020	Due to the ongoing restraints of COVID throughout 2020, the number of field trips that the Board were able to undertake were unfortunately limited to just one. In November, there was a visit to the site of the newly completed Park & Ride facility in National Park, followed by a presentation from Uenuku regarding the proposed Pokaka Eco Sanctuary. The Board then took a walk along the Ruapehu Cycle Trail from Erua Road to Road Bridge. The Board agreed that this field trip was extremely valuable especially the time spent with Uenuku.

Table 4: Field trips and site inspections

4.9 Board Committees

Membership of Board committees is reviewed regularly. The board reviewed the values and principles to align all sub-committees with Nga Pou o Te Pae Maunga.

Committee name	Members
Strategic Planning Policy Partnerships and CMS	Karen Grimwade– Chair Dave Milner Mike Britton Georgina Winter
World Heritage – Pae Maunga	Georgina Winter – Chair Hinemoa Wanikau Peter Zimmer
Statutory Process	Chloe Walker - Chair Peter Zimmer

Table 5: Committees

Strategic Planning Policy Partnership and CMS

The purpose of this subcommittee was to advise the Department on conservation management processes including CMS review, CMS Monitoring, NMPs and business planning generally. During the reporting year the sub-committee met twice to discuss the purpose, process, and direction of the CMS. The subcommittee, with a special effort by Karen Grimwade, completed a review of the current CMS and the progress made with its implementation.

This will form the basis of work during the next twelve months to start the review process, hopefully being able to bring in some planning support with some assistance of the Department.

The Board also made submissions to the Options Development Group and on the Management Plan Review currently under way, stressing the importance of planning to ensure measured and careful guardianship of our natural taonga and also providing a process for public input into how these precious places are used and protected.

World Heritage – Pae Maunga

The purpose of this subcommittee was to provide an advisory role in relation to the dual World Heritage Status of Tongariro National Park.

Statutory Processes

The purpose of this subcommittee was to provide advice and advocacy on Resource Management Act (RMA) processes, concessions, major works approvals and service delivery. The committee has a formal role in relation to concession applications on the Tongariro Alpine Crossing (TAC) as part of the NPMP. Advice was given on a number of applications, especially the proposal to locate a zip line in the vicinity of the Huka Falls. Longer serving members of the Board were frustrated that, despite an undertaking given by the then General Manager of Ruapehu Lifts, public access into Happy Valley was cut off by the gondola development. Protecting the right of public access to protected lands managed by the Department is a priority for the Board.

4.10 Department Involvement in Board meetings

Department staff regularly attended throughout the year and public forums were offered at each Board meeting for members of the public to raise conservation issues with the Board.

4.11 Annual Work Plan

Please refer to Appendix 1 for the full Board Annual Work Programme.

5 Statutory Activity

5.1 Conservation Management Strategy (CMS)

The Board has continued to monitor the Tongariro Taupō CMS and receive updates from the Department. Over a number of annual reports the Board has expressed concern at the delays in the review of the Tongariro Taupō CMS, and considers that with the signing of the Treaty Settlements with the principal Iwi in the region, and given their key role in the development of CMS, this has become very urgent. This is further covered in the Chair's report.

The gap between what is expected of the Conservation Boards and the reality of the resources and Departmental support is wide in regard to CMS development. This has been and is an ongoing source of frustration for previous and current board members. We are constantly seeking a positive way forward – which is proving difficult without resources or support from planning staff.

6 Advice and Advocacy

All Board members have responsibility for liaising with other groups when opportunities arise, and some members have specific roles in liaison. The Board appointed various members to liaise with other groups and agencies.

Board member	Liaison with
Chloe Walker	Bay of Plenty Conservation Board
Dave Milner	Wellington Conservation Board
Karen Grimwade	Waikato Conservation Board
Peter Zimmer	Taranaki/Whanganui Conservation Board

Amoa Hawira	East Coast/Hawkes Bay Conservation Board
-------------	--

Table 6: Board liaisons and representatives

6.1 Authority Liaison

Maxine Shortland has been the New Zealand Conservation Authority (NZCA) liaison to the Board. Her input and involvement in meetings has been extremely valuable to the board. The Board would also like to record its appreciation of Dame Kerry Prendergast who preceded Maxine as Authority liaison.

6.2 Department Advice

The Board provided advice to the Department where required throughout the year.

6.3 Community Advocacy and Involvement

The Board believes working with conservation organisations and members of the public is very important. Meetings provide opportunities for the public to attend Board meetings where advertised.

Members of the public attended the Public Forum at several of the year's meetings and a range of issues were raised. The Board appreciated their input and efforts made to attend the meetings and responded by letter with a response to questions asked or concerns raised.

Public forum issues raised were:

Stewart Barclay, Adrift Tongariro

Attended the public forum as a representative for the guiding and transport community to discuss matters that are affecting guiding concessionaires with regards to the timing around concession processes.

Mark Frederick, Owhango Alive

Presented to discuss the slip on the Ohinetonga Loop Track.

Simon O'Neill, National Park Community Representative

On behalf of the local community, Mr O'Neill gave some feedback on the Ohinetonga Trail. They would like more communication around what is happening with the repairs to the track. He also expressed his concern about the current condition of parts of the Tongariro Alpine Crossing track and the level of maintenance.

Cam Speedy and John Cook, Central North Island Sika Foundation

Attended the Public Forum to present their research and management Proposal Plan for the culling of deer in the Kaimanawa and Kaweka Ranges.

6.4 Community Visibility

The Board maintains a presence on the Department's website. Updates from the Board were provided throughout the year on activities undertaken.

6.5 District and Regional Council Advocacy and Advice

The Board appreciates the opportunities to meet with representatives of the four local Councils as there are several regional issues in which it is interested.

Appendix I –Annual Work Plan

Tongariro Taupo Conservation Board Work Programme

1 July 2020 – 30 June 2021

Work Programme Overview

This Board decided to simplify its work programme and focus on the issues the Board felt significant for its rohe. Attention to the Minister’s letter of expectation was taken into account, but as usual, its late arrival meant it was not available at the time our work programme was set.

1	Relationship with Iwi	Develop and enhance relations with our four main Iwi.	Meetings held with Ngāti Tuwharetoa, Uenuku and Ngāti Rangī during the year. Uenuku and Ngāti Haua invited to have a co-opted representative on the Board Co-chair model of governance with Iwi representatives assuming the co-chair position depending on the area in which meeting are held.
2	Visitor and tourist management and facilities	Overview of the impact of visitors on the conservation land and natural taonga within the Board’s rohe and the provision, use and maintenance of the facilities they need. Take advantage of the reset in visitor numbers as a result of Covid-19 and the closure of borders to promote new policies which allow enjoyment of national park/world heritage area by the community while controlling impact. Work with Iwi partners, the Department, district councils and other agencies to control and manage visitor numbers to a sustainable level.	This is a great opportunity, but the main Board input has been response to planning by the New Zealand Conservation Authority (the Authority) and the Department. Progress has been made in looking at issues in relation to overcrowding on the Tongariro Alpine Crossing and associated with the ski fields. Parking issues on the state highway adjacent to the Ketetahi Road continue to concern the Board and what should be an easy fix seems to be lost in bureaucratic inaction.
3	Conservation Management Strategy (CMS)	Monitor the implementation of the current CMS by the Department. Provide advice to the Department, the Authority and the Minister of Conservation on the budget allocated for management in the Board’s rohe. In consultation with Iwi partners (as far as possible) begin reviewing some key	As noted in the Chair’s report significant progress has been made in reviewing progress in implementing the present plan and starting to identify matters to be addressed as the review is progressed. We continue to seek some access to resources and planning support from the Department.

		policy or new policy requirements in advance of beginning the formal review of the CMS.	
4	Biodiversity	<p>Provide an overview and advice to the Department on the implementation of the New Zealand Conservation Strategy</p> <p>Support the Department in conversations about predator control actions.</p> <p>Monitor management of deer populations by the Department and hunter groups.</p>	<p>Regular reports received from the Director evaluated and recommendations made.</p> <p>Participation by community groups in biodiversity protection encouraged and facilitated.</p> <p>A greater acceptance in the community of the necessity to undertake aerial pest control to protect the biodiversity in our rohe.</p> <p>Annual report on deer control received from the Director each year. Close liaison maintained with the Sika Foundation on deer and pest control in Kaimanawa Conservation Park.</p>
	Liaison roles – other boards, statutory relationships; Fish & Game etc.	<p>Appoint Board Members to Liaison roles, including neighbouring boards and encourage regular contact.</p> <p>Invite representative from other boards to attend TTCB meetings.</p> <p>Participate in conservation board chair huis.</p>	<p>Regular updates to the boards from those in Liaison roles, and Hui's arranged where applicable where matters of mutual interest are being considered.</p>
	Working with the Department	<p>Provide advice to the Department on any Concessions or issues they require consideration from the Board.</p> <p>Provide advice to the Department on any Concessions requiring Board input.</p> <p>Advocate on behalf of the Department anything that enables the Department to fulfil their roles and obligations in the Bay of Plenty.</p> <p>Advocate for the environment locally and nationally.</p>	<p>Board agendas revised to be future focussed.</p> <p>Advice provided on concessions that will potentially impact on conservation values or increase pressure on the areas involved.</p> <p>The Board has expressed concern during the year at the lack of timely advice on issues or matters which, while sometimes are mainly operational, are still of significance to the Board and the community to which it relates. A system has been set up to provide more routine information updates.</p> <p>Seek to support Department of Conservation staff in their roles and encourage them to include the Board in information and communications that are</p>

			of relevance to the Board and the local community.
--	--	--	--