

# Tongariro/Taupo Conservation Board

Te Poari Papa Atawhai  
o Tongariro/Taupo

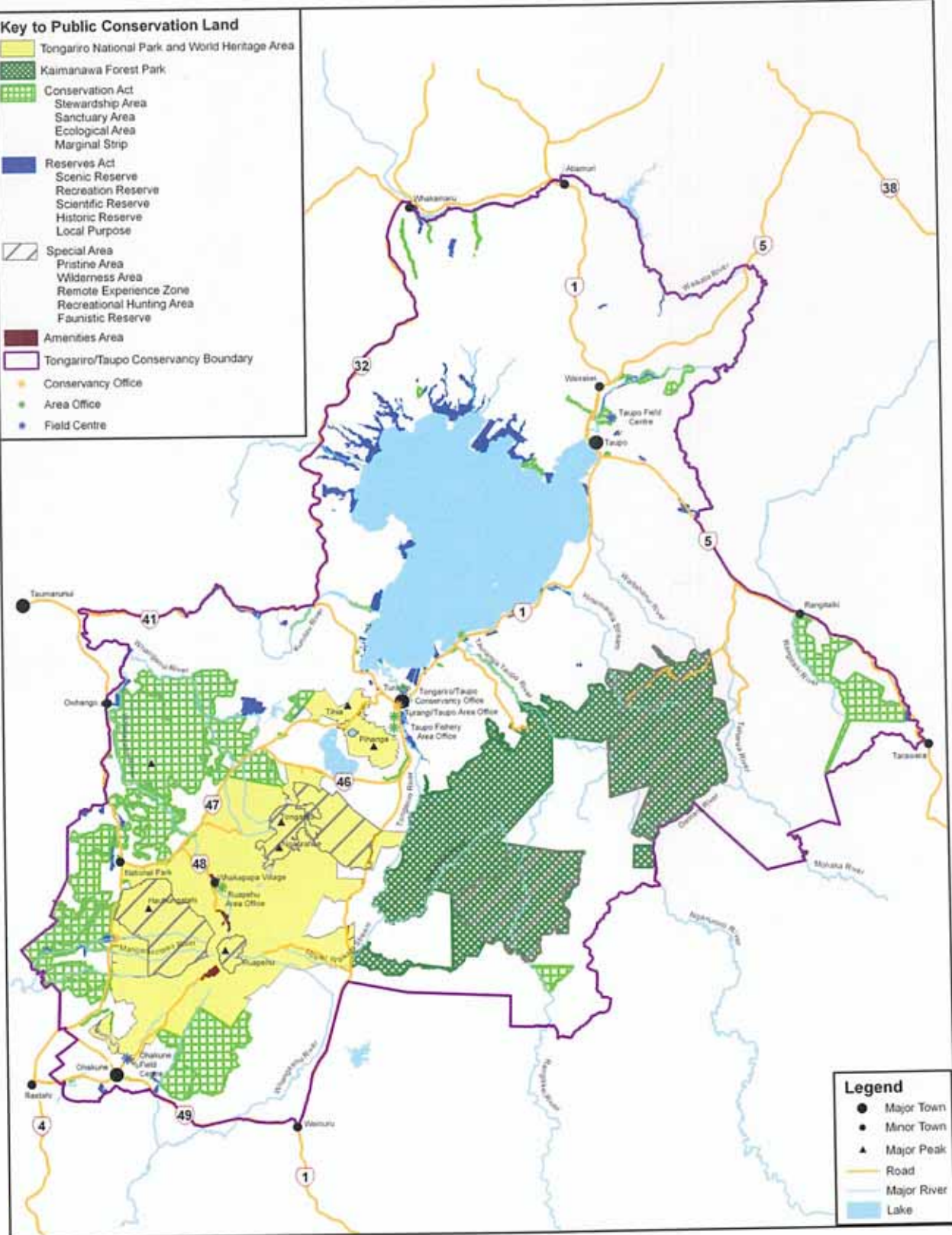
**Annual Report**  
**July 2006 - June 2007**



# Tongariro/Taupo Conservancy

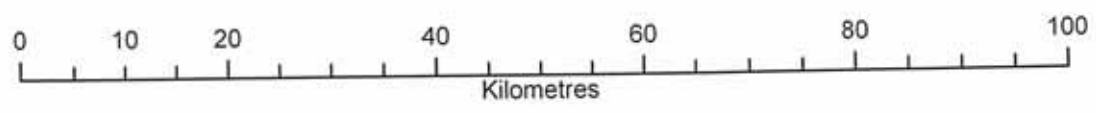
**Key to Public Conservation Land**

- Tongariro National Park and World Heritage Area
- Kaimanawa Forest Park
- Conservation Act
  - Stewardship Area
  - Sanctuary Area
  - Ecological Area
  - Marginal Strip
- Reserves Act
  - Scenic Reserve
  - Recreation Reserve
  - Scientific Reserve
  - Historic Reserve
  - Local Purpose
- Special Area
  - Pristine Area
  - Wilderness Area
  - Remote Experience Zone
  - Recreational Hunting Area
  - Faunistic Reserve
- Amenities Area
- Tongariro/Taupo Conservancy Boundary
- Conservancy Office
- Area Office
- Field Centre



**Legend**

- Major Town
- Minor Town
- Major Peak
- Road
- Major River
- Lake



# Tongariro/Taupo Conservation Board

Te Poari Papa Atawhai  
o Tongariro/Taupo

Annual Report  
1 July 2006 - 30 June 2007

Presented to the New Zealand Conservation Authority  
pursuant to Section 60 of the Conservation Act 1987

Serviced by  
Department of Conservation  
Private Bag  
Turangi, New Zealand

**Cover Photo:** The Middle Range Summit in the Kaimanawa Forest Park during a Board inspection on 11 October 2006. **Photo:** Les Molloy (Board Member)

© Copyright 2007, New Zealand Department of Conservation

ISSN 1176-6735

## INTRODUCTION

### Functions

The Tongariro/Taupo Conservation Board is an independent advisory body, appointed by the Minister of Conservation. The Board has a number of statutory roles, which include:

- the development of the Tongariro/Taupo Conservation Management Strategy (CMS) and the recommendation of this to the New Zealand Conservation Authority (NZCA) for approval
- advising the Department of Conservation and the NZCA on how conservation management strategies and plans will be put into practice
- monitoring the implementation of the CMS
- the approval of Conservation Management Plans
- the recommendation of National Park Management Plans to the NZCA for approval
- advising the Department of Conservation and NZCA on conservation matters, proposed changes to the status of land with national and international significance, and new walkways,
- liaising with the Fish and Game Council, and
- carrying out other powers delegated to them by the Minister of Conservation, the Conservation Act or any other Act.

### Area of Responsibility

The Tongariro/Taupo Conservancy covers 780,000 hectares, of which approximately 217,000 hectares is administered by the Department of Conservation. It is also the area of responsibility for the Tongariro/Taupo Conservation Board (refer to the Map). The conservancy is unique in that it has no ocean coastline and includes the Lake Taupo sport fishery.

The Conservancy is dominated by the volcanic landscape of Tongariro National Park, the beech forest and tussock ranges of Kaimanawa Forest Park and by New Zealand's largest lake, Lake Taupo. Tongariro, Erua and Rangataua Conservation Areas to the east and south of the national park, play a valuable part in terms of their ecological features and recreational opportunities.

Tangata whenua - Ngati Tuwharetoa, Ngati Rangi and Ngati Tahu Iwi - have long had a special relationship and history with the mountains, lakes, waterways and geothermal features of this area. Tongariro, New Zealand's first national park, grew from the Ngati Tuwharetoa gift of its mountains to the nation in 1887. The park received World Heritage status in 1988 for natural landscape values and in 1993 for its cultural landscape values, recognising the special significance of the mountains to Tuwharetoa and Wanganui iwi.

The Conservancy contains many rare, uncommon, vulnerable or threatened native plants, birds, communities and ecosystems. Managing these in light of weeds, predators, fires and other threats remains an ongoing

challenge.

Lake Taupo and its tributaries provide opportunities for world-class fishing and numerous other forms of water recreation. Tongariro/Taupo Conservancy manages the sport fishery in partnership with Ngati Tuwharetoa, as prescribed by the Maori Land Amendment and Maori Land Claims Adjustment Act 1926.

The landscape of the area is unique in New Zealand and large numbers of national and international visitors come here for sightseeing and recreation. Tongariro National Park is the most visited national park in New Zealand and numbers are expected to rise further. In contrast, the surrounding mountain ranges retain a feeling of remoteness and isolation which is increasingly sought by recreationists - New Zealanders in particular.

A large number of issues occur on these lands which are of interest to the Board. These include:

- management of plant and animal species such as the blue duck (whio), kiwi (western North Island Brown), and 2-3 species of mistletoe.
- management of recreational facilities such as huts and tracks
- management of historic sites
- concession activities, including those relating to recreation and tourism, grazing, research, and leases.

The Tongariro/Taupo Conservation Board has a responsibility to the people of the Tongariro/Taupo district, and the wider New Zealand population, to ensure these lands and the biodiversity which they contain are protected and enhanced.



**Right:** Looking out at Lake Taupo from Middle Range Summit, Kaimanawa Forest Park.

**Photo:** Jo Hood

## Membership

The names, locations of the members of the Tongariro/Taupo Conservation Board, and attendance at meetings from 1 July 2006 to 30 June 2007 were as follows:

Sue Carson	Rotorua	4
Ngaire George	Rotorua	1
Sarah Gibb	Taupo	5
Maree Gurney	Marton	5
Rob Lester#	Turangi	4
Bruce Jefferies*	Taupo/Wanaka	1
Betsan Martin	Wellington/Te Rangiita	5
Les Molloy	Wellington	6
Richard Pirere	Ohakune	3
Judy Reid#	Wellington	4
Brian Robinson	Taupo	6
Warwick Silvester*	Hamilton	2
Tumu te Heuheu	Taumarunui	0
Alex Wilson	Rotorua	6

\*Members whose terms expired at 31 August 2006

#Members who were newly appointed 1 September 2006



**Right:** Tongariro Taupo Conservation Board  
**Back Row from Left:** Richard Pirere, Betsan Martin, Warwick Silvester\*, Sarah Gibb, Alex Wilson, Brian Robinson  
**Front Row from Left:** Maree Gurney, Les Molloy  
**Absent:** Ngaire George, Sue Carson, Tumu te Heuheu, Judy Reid, Rob Lester  
**Photo:** Jo Hood

## Conservation Board Meetings

The Tongariro/Taupo Conservation Board held six formal meetings, including four field inspections, during the reporting period.

### *17 August 2006*

The Board had a field trip up to the Turoa Skifield to meet with Ruapehu Alpine Lifts to discuss their operations and works that were planned for the summer.



**Right:** Board members and DOC planner Ro Cudby, Maree Gurney and Sarah Gibb getting ready to head back after field trip to Turoa.

**Photo:** Jo Hood

### *18 August 2006*

This meeting was held at the Powderhorn Chateau, at Ohakune. The Board had a CMS monitoring report presentation on Recreation Concessions. The Board also discussed the issues they wished to take to the New Zealand Conservation Authority at their October meeting as they were meeting in the Tongariro/Taupo Conservancy. The issues were water quality - Lake Taupo and Carla Wilson's report on Conservation Boards. Sue Carson presented the Boards response to Carla Wilson's research on Conservation Boards.

### *11 October 2006*

There was a joint Department and Board workshop to discuss the draft Kaimanawa Forest Park Management Plan.

In the afternoon the Board had a field trip into the Kaimanawa Forest Park in helicopters. This field trip was to investigate the issues at remote experience zones. We stopped on top of the Island Range, on the East Taupo land in the upper Rangitikei River and at Motumatai.



**Right:** Les Molloy, Sue Carson and Bruce Jefferies on the field trip into the Kaimanawa Forest Park.  
**Photo:** Jo Hood



### ***12 October 2006***

This meeting was held at the Department of Conservation office in Turangi. This was the last meeting for members Bruce Jefferies and Warwick Silvester. The Board had a CMS monitoring report presentation on Tongariro-Ruapehu. The Board joined the New Zealand Conservation Authority for part of their meeting. Firstly to see the signing off of the Tongariro National Park Management Plan, a real milestone, then for a presentation on the Heather Beetle and lastly to give a presentation on some of the issues that the Tongariro/Taupo Conservation Board felt had nationally significance. These issues were decided at the 18 August meeting.

### ***13 October 2006***

Joint field trip with the New Zealand Conservation Authority. The day started with a visit to the South Taupo Wetland where they had a boat trip out into the wetland to see a community partnership in action. They then headed to Access 10 in the Kaimanawa Forest Park where they had a picnic lunch. It was then off to Kapoors Road in the Tongariro Forest where they received presentations on the values of the Tongariro Forest, Kiwi management and 1080 operations, who management and lastly the 42 Traverse.

### ***8 December 2007***

This was a regular meeting held in Turangi. Many Board members had attended the Conservation Awards the night before. It was exciting to see Warwick Silvester a previous Board member receive an award. The Board received a CMS monitoring report presentation on Plateau Forests. The Board also had a presentation from Ruapehu District Council on their District Plan review.

**Right:** Paul Green, Tongariro/Taupo Conservator presenting a Conservation Award to Warwick Silvester.  
**Photo:** Pete Devlin



### ***16 February 2007***

The meeting was held at the Department of Conservation Offices in Turangi. They received a presentation from Harry Keys on the Crater Lake and managing volcanic risk in the Tongariro National Park. The CMS monitoring report presentation at this meeting was on Freshwater Fisheries (a) Indigenous (b) Sports.

### ***12 April 2007***

The Board went on site visit to Turoa Skifield to see the new chairlift and snow making facilities that RAL had been constructing over summer. This was a follow up from the site visit of 17 August 2006.

**Right:** Board members being shown the new chairlift and snow making facilities at Turoa by Dave Mazey from RAL.  
**Photo:** Herwi Scheltus



*13 April 2007*

This was a regular meeting in Turangi. The Board had come to the end of the first round of CMS monitoring reports so had a discussion about how they wanted the next round run. A further discussion on this matter is due to take place in October 2007. The Board had a presentation from John Gibbs on the Taupo Sports Fishery.

*16 June 2006*

The Board met in Turangi. The Board received a presentation from Horizons Regional Council giving an update on the 'One Plan' (Regional Plan). The Board also received and signed off on the Kaimanawa Forest Park Management Plan. The CMS monitoring report received was on Protection of Historic Resources.

## STATUTORY FUNCTIONS - CONSERVATION ACT

### **Conservation Management Strategy**

The Tongariro/Taupo Conservation Management Strategy was approved in May 2002 and has a lifetime of ten years.

The Board has initiated the process of CMS monitoring reporting which has been ongoing since 2004. The Board was briefed on five of the 20 sections of the CMS. The sections covered were:

#### **Recreation Concessions**

The Board agreed with the suggestions for future reviews to be implemented. They were:

- Outcomes at places including thresholds of acceptable activity for all users (as outlined in the Concessions review)
- Include more specific monitoring reporting measures in the CMS
- Include key performance indicators to assess conservation outcomes

The Board also accepted the need for the department to develop environmental user impact measures to start being able to quantify impacts and therefore restrict the number of recreation concessions in a particular area if needed.

#### **Tongariro-Ruapehu**

The Boards response is yet to come.

#### **Plateau Forests**

The Board stated that the Department is to be highly commended on it's efforts towards conservation of endangered species on the Plateau Forests. The programmes for the protection and study of both Kiwi and Blue Duck are contributing significantly to the preservation and proliferation of these species. The studies underway are scientifically sound and will result in an increased understanding of these endangered species. These programmes will serve as models for future studies of

these species in other areas and of other endangered species.

#### **Freshwater Fisheries (a) Indigenous (b) Sports**

The Boards response is yet to come.

#### **Protection of Historic Resources**

The Boards response is yet to come.

#### **Achieving Conservation on Areas Not Administered by the Department**

The Boards response to this report which was heard last year is to support the recommendations made that:

The Department "*incorporate objectives for ....protection on private land of key habitats and sites within the conservancy's strategic directions for biodiversity*".

and

further models of partnership with hapu be considered in pursuing biodiversity goals within the conservancy.

#### **Visitor Information and Community Involvement.**

Board's response from last years report. The Board recommended that:

- While generally the conservancy is able to meet and implement the provisions of section 3.6 the Board would recommend for the future:
- Expansion of community involvement through continued resourcing of well established organisations such as the Tongariro Natural History Society and Tongariro National Trout Centre Society. These organisations have shown how, with DOC support, they can greatly assist the department in achieving the principles of section 3.6.
- Investigate and follow up opportunities to work more closely with schools, both those in the conservancy and those which visit the area, possibly through funding and resourcing external organisations to assist the department in meeting its CMS obligations.
- The future consideration of the inclusion of a section on interpretation and another on conservation education - on, for and about the environment, in the CMS.
- The Board is aware a conservancy public awareness strategy is being prepared and recommend this be an opportunity to address the apparent omission of interpretation and conservation education from the CMS.

## **Change of status or classification**

There has been no progress on the addition of Rangataua Forest to the Tongariro National Park or the gazettal of Tongariro Forest as a conservation park. These areas are currently subject to a Treaty of Waitangi claim.

The gazettal of the proposed scenic reserve at Huka Falls is currently on hold due to outstanding Treaty issues.

## **Advice on Other Conservation Matters**

The Board was consulted by or gave advice to the Department and NZCA on the following:

### ***Concessions***

The Board continued to give advice to the Department on a number of concession applications that were forwarded to the Board provided approval criteria mechanisms were met. The department continued to provide a summary of concessions currently being processed at Board meetings.

The concessions considered by the Board during this report period include the following:

#### **Dare 2 Sweat Events Limited**

This application was for a permit to hold a proposed multi sport event. The Board did not have any issues with this application but if the concession was granted the Board felt the event would need to be closely monitored, assessed for effects and reviewed annually.

#### **Taupo Te Kohanga Reo**

This application was for a lease to locate their Kohanga on part of the Scannell Street Local Purpose Reserve. The Board had no issues with this application.

#### **GNS Science**

This application was for an easement to locate lahar monitoring equipment at the rim of Mt Ruapehu Crafter Lake. The Board had no issues with this application.

### ***Liaison with Fish and Game Council***

An Eastern Fish and Game Council representative continues to be informed of the Board's work through agenda papers and minutes.

## **Powers of Boards**

### ***Conservation Advocacy***

When appropriate the Board has become involved in advocating for conservation mainly through submissions on resource consents, or through regional and district plans.

The Boards Statutory Planning subcommittee identifies those consents with likely significant impacts on conservation values and then makes a decision on whether or not to include a submission.

The Department kept the Board regularly informed about planning issues through regular reports at Board meetings.

Much of the work undertaken by the Statutory Planning subcommittee this year has focussed on the Taupo West area of the Conservancy. This area is undergoing intense pressure from development applications that place significant pressure on this scenic area. Applications for large developments opposite the DOC Whakaipo Bay Scenic Reserve (Lakeview Ventures) and one development (Sade Developments) surrounded by the Whakaroa Point Recreation Reserve, Whakaipo Bay Scenic Reserve and Whakaipo Bay Recreation Reserve were opposed in the submissions lodged by the Board, both to Taupo District Council (TDC) for planning consent and Environment Waikato (EW) for water takes and discharge and earthworks. TDC and EW have now approved one of the applications from Lakeview Ventures but the Board does not have the resources to appeal this decision or to support any appeals by other parties.

The reasons for the opposition were: adverse cumulative effects that would endanger the existing landscape and amenity values and rural character of the area. The Whakaipo Bay Recreation Reserve and Whakaroa Point are valued for their outstanding landscape and vegetation attributes and setting in the rural environment. There were also environmental concerns for the Mapara stream and the waters of Whakaipo Bay where algal blooms are already occurring.

During the year, the Board commented on TDC District Plan Variations 19-21 and the Growth Management Strategy. The topic of 'Outstanding Landscapes and Natural Areas' received good recognition but now clearly needs to be followed up with appropriate regulations. Similarly, 'Lake Water Quality' was deemed important, but most of the new planned growth areas are close to the shores of Lake Taupo. The Board was also keen to see that a green belt around the Lake would ultimately be established.

The main points of our submission on EW Proposed Waikato Regional Plan Variation 5 - Lake Taupo Catchment, namely increasing the amount of nitrogen reduction, setting a tighter time frame for this reduction and a fairer nitrogen allocation option, were not upheld by the hearings committee. Six major parties are appealing the decision on these and other points. Although the Board is in support of a number of these parties it does not have the resources to join the appeal process.

## **Appointment of Committees**

The following Board subcommittees functioned from 1 July 2006. After the appointments of new Board members in October 2006, membership of the committees was revised and approved at the February 2007 meeting. Members whose term expired at 31 August 2006 are marked with an \*. Members who were newly appointed 1 September 2006 are marked with an #.

### ***Concessions***

Sarah Gibb (facilitator), Maree Gurney, Richard Pirere, Ngaire George, Sue Carson.

### ***Crater Lake***

Brian Robinson (facilitator), Warwick Silvester\*, Rob Lester#, Richard Pirere, Betsan Martin.

### ***Management Planning***

Warwick Silvester\* (facilitator for TNPMP), Les Molloy (facilitator for KFPMP), Bruce Jefferies\*, Maree Gurney, Betsan Martin, Rob Lester#.

### ***Statutory Planning***

Brian Robinson (facilitator), Bruce Jefferies\*, Betsan Martin, Ngaire George, Judy Reid#.

### ***CMS Monitoring***

Sue Carson (facilitator), Les Molloy, Brian Robinson.

### ***Recreation***

Bruce Jefferies\* (facilitator), Maree Gurney (new facilitator), Les Molloy, Rob Lester#, Sarah Gibb, Judy Reid#.

## OTHER RESPONSIBILITIES UNDER THE CONSERVATION ACT

### Co-opting Members of the Board

Bruce Jefferies was co-opted on to the Board until the Kaimanawa Forest Park Management Plan was approved. The KFP Management Plan was approved at the 15 June 2007 meeting.

## BOARD FUNCTIONS UNDER THE NATIONAL PARKS ACT

The Board and the Department have worked on the Tongariro National Park Management Plan review process during 2006/2007 and were pleased to see it being signed off by the authority at the 12 October 2006 meeting.



**Right:** Board members Rob Lester, Judy Reid, Sue Carson and Les Molloy enjoying the sunshine while on a lunch break.  
**Photo:** Jo Hood

## BOARD RESPONSIBILITIES UNDER OTHER ACTS

### Walkways Act 1990

No actions were taken by the Board under the New Zealand Walkways Act 1990.

### Reserves Act 1977

The Board responded to all concession applications, where they involved reserves, in terms of the Reserves Act 1977.



## LIAISON

All Board members receive the minutes of the New Zealand Conservation Authority meetings. Through the year contact has been maintained with NZCA liaison member John Nankervis.

Agendas and minutes from neighbouring conservation Boards are provided to individual liaison members who raise items of relevance and occasionally attend other Boards' meetings.

The Board continues to liaise with numerous organisations including:

Bike Taupo;	Royal Forest and Bird Protection Society;
Eastern Regional Fish & Game Council;	Ruapehu Alpine Lifts;
Environment Waikato;	Ruapehu District Council;
Farm Environment Award Trust;	Ruapehu Mountain Clubs Association;
Federated Mountain Clubs; Taupo-nui-a-Tia Management Board;	Taupo District Council;
Genesis;	Taupo-nui-a-Tia 2020;
Lakes and Waterways Action Group;	The Grand Chateau;
Lake Taupo Development Co;	Tongariro National Trout Centre Trust;
Mighty River Power;	Tongariro Natural History Society;
Ngati Hikairo ki Tongariro Trust;	Tongariro River Advocates Inc.;
Ngati Rangī Trust;	Tuwharetoa Maori Trust Board
NZ Forest Managers;	



**Photo:** Alex Wilson (Chairman) presenting a Conservation Award to Waitetoko Marae.

**Photo:** Pete Devlin

## The Board's 2006/2007 Financial Year

### *Tongariro/Taupo Conservation Board 2006/2007 Expenditure*

Resource	Expenditure
Board Member Fees	11,540
Postage/Freight & Courier	376
Phones/toll/faxes	788
Domestic Travel - Airfares	385
Domestic Travel - Other Cost	13,112
Office Supplies	1,109
Professional Fees	240
Printing and Publishing	1,356
Catering & Entertainment	5,007
Ex-Gratia / Koha	0
<b>Total</b>	<b>33,913</b>

### CHAIRPERSON'S REPORT

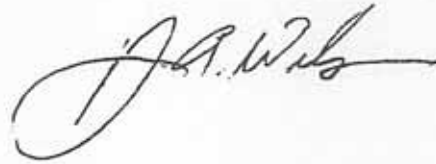
Two members were farewelled at their last meeting in October 2006. Bruce Jefferies had served on the Board for three years while Warwick Silvester completed a second term of three years. I would like to thank them for their services and contribution to Board work.

Board members would like to acknowledge the Conservancy staff who continued to provide the Board with a high standard of timely and professional advice. Area Office staff involved in hosting the Board on its field trip into the Kaimanawa Forest Park, have done this with enthusiasm and have provided opportunities for members to view the conservation work being done and gain an insight into some of the issues that they face. Special thanks are due to Jo Hood (Board Support Officer), Paul Green (Conservator), Nic Etheridge (Conservation Support Manager), Jim Maniapoto (Kaupapa Atawhai Manager) Ro Cudby (Planner, finished October 06), Jasmine Hessel Planner, started December 06) and the Community Relations and Technical Support team for their input and guidance during the year. Best wishes from the Board were extended at a farewell for Nicola Patrick (Ruapehu Area Manager).

I would like to thank the Board members for the contribution they have made to ongoing conservation issues which the Board has dealt with. The Board has continued to contribute positively to Tongariro/Taupo communities through quality advocacy. This has resulted from the use of the skills and knowledge of members, their willingness to engage,

when necessary, in robust debate and their appreciation of the value of our special landscapes and ecosystems.

It has been a busy year as the Board has managed its responsibilities and priorities. A number of issues have been worked through in the last year and the Board looks forward to the challenges of the coming year.



Alex Wilson

Chairperson



Right: Board members  
outside Korihi Biv, October  
2006.

Photo: Les Molloy

## Adoption of Report

### Moved:

*That the Tongariro/Taupo Conservation Board adopt the annual report for 2006/2007 and forward it to the New Zealand Conservation Authority by 31 August 2007, as required under section 60 of the Conservation Act 1987.*

Brian Robinson/Rob Lester

**Carried**

10 August 2006