

East Coast Hawkes Bay
Te Tairāwhiti ki Te Matau-a-Maui
Conservation Board
Annual Report 2023- 2024



Figure 1 Opouahi Scenic Reserve

East Coast Hawkes Bay Te Tairāwhiti ki Te Matau-a-Maui Conservation Board Annual Report 1 July 2023 to 30 June 2024

Presented to the New Zealand Conservation Authority
pursuant to Section 6 (O) of the Conservation Act 1987

Published by
East Coast Hawkes Bay Conservation Board
c/o Department of Conservation
28 North Street
Palmerston North
4410

ISSN 2463 3089 (print)
ISSN 2463 3097 (online)

Photographs:

Front Cover: Opouahi Scenic Reserve – Rena Kohere, Chair of East Coast Hawke’s Bay Conservation Board

Figure 2: Lake Opauahi Kiwi Creche with ECHB CB members, DOC and Kiwi Creche Staff – Keri Ropiha

Back cover: – **DOC Library** – Packhorse Crayfish – Te Tapuwae o Rongokako Marine Reserve

CONTENTS

Chairperson's report	4
Introduction.....	6
Conservation board region.....	6
Conservation features of the area.....	7
Board functioning.....	8
Board functions under section 6m of the Conservation Act 1987	8
Powers of the Board under section 6n of the Conservation Act 1987.....	8
Board membership.....	9
Members profiles.....	9
Board meetings.	10
Attendance.....	10
Field trips and site inspections	11
Department involvement in Board meetings.....	11
Annual Work Plan.....	11
Statutory activity.....	12
East Coast Hawkes Bay Conservation Management Strategy (CMS)	12
Advice and advocacy.....	12
Other Conservation Boards liaison	12
Authority liaison.....	12
Department advice.....	12
Community visibility.....	12
Iwi liaison and advocacy	13
Appendix I –Annual Work Plan.....	14

Chairperson's report

Kia ora koutou,

On behalf of the East Coast Hawke's Bay Conservation Board, I am pleased to present this Annual Report, which reflects the board's activities, challenges, and successes over the period from July 2023 to June 2024. This year has been one of steady progress as we continue to advocate for and support the conservation of the natural heritage in our region.

Governance and Strategic Direction

The Board remains steadfast in its mission to represent and safeguard the ecological, cultural, and recreational values of the East Coast and Hawke's Bay regions. We have continued to work closely with the Department of Conservation (DOC) and various local and regional stakeholders, ensuring alignment with national conservation priorities while addressing the specific needs of our diverse communities.

Our work this year focused on refining and advancing strategic initiatives in conservation planning, biodiversity enhancement, and the recognition of the cultural significance of natural spaces to iwi and local communities. This was especially important as we worked alongside local councils and tangata whenua to incorporate Te Ao Māori perspectives into our conservation approaches.

Key Achievements

1. Biodiversity Protection and Restoration

Throughout the year, the board has been involved in supporting vital biodiversity projects across the region. One significant achievement has been the continuation of pest control and eradication programs in vulnerable ecosystems. These efforts, particularly in our native forests and coastal areas, have seen encouraging results in terms of increased native species populations and regeneration of threatened habitats.

2. Partnerships with Iwi and Community Groups

This year, our partnerships with local iwi and community conservation groups have strengthened. We have supported projects that highlight the cultural importance of conservation work, with particular emphasis on the restoration of wetlands, rivers, and forests that hold significance to tangata whenua. We are proud of the collaborative efforts to protect and enhance these areas.

3. Conservation Education and Advocacy

A core part of our role is to raise awareness and engage with the public on conservation issues. This year, we continued to engage with local groups, and the wider public through Jobs For Nature projects in our region and the Raukūmara Pae Maunga in particular, and field trips.

4. Management of Conservation Lands

The board has continued to provide advice on the management of conservation lands within our region. We have actively participated in discussions regarding the management plans for parks, reserves, and conservation areas. Through these discussions, we have advocated for better integration of cultural and environmental needs into land management practices.

Challenges and Opportunities

While there have been many successes, we also faced challenges, including the increasing pressures of climate change, recovery from Cyclone Gabrielle, and the ongoing demand for resources to support conservation work. Balancing these pressures with the need for sustainable development and legislative changes has been a difficult task, but one that the

board has approached with a focus on long-term sustainability and a commitment to Te Tiriti o Waitangi.

Looking ahead, we are excited about the opportunities to further improve conservation outcomes by leveraging technology in areas such as monitoring, data collection, and community engagement. We also see increasing importance in fostering stronger connections between people and the natural world, ensuring that conservation efforts are embedded in our communities' values and daily lives.

Acknowledgements

I would like to extend my heartfelt thanks to my fellow board members for their dedication and hard work over the past year. Their expertise, passion, and commitment to conservation have been invaluable. I also wish to acknowledge the support of DOC staff, iwi partners, local government representatives, and the many volunteers who contribute to conservation in our region. Your continued support is vital to the success of our collective efforts.

In closing, I am optimistic about the future of conservation in the East Coast Hawke's Bay region. Together, we are making significant strides in protecting our environment for future generations.

Ngā mihi nui,

A handwritten signature in blue ink, appearing to read 'Rena Kohere'.

Rena Kohere
Chairperson
East Coast Hawke's Bay Conservation Board

Introduction

This is the Tenth East Coast Hawkes Bay Conservation Board Annual Report. Section 6(O) of the Conservation Act requires conservation boards to provide the New Zealand Conservation Authority (the Authority) with an annual report as soon as practical after 30 June each year. In recognition of this requirement the East Coast Hawkes Bay Conservation Board submits this annual report.

Conservation boards are appointed by the Minister of Conservation under section 6(P) of the Conservation Act 1987. Board functions are outlined in section 6(M) and the powers, which enable the conservation boards to carry out those functions, are under 6(N) of the Act.

Conservation boards are independent advisory bodies, established by statute. They represent the community and offer interaction between communities and the Department of Conservation (the Department), within their area of jurisdiction.

Conservation boards have several statutory roles under various Acts including:

- advising the Department and the Authority on how conservation management strategies and plans will be put into practice.
- the approval of conservation management plans
- the recommendation of national park management plans to the Authority for approval
- advising the Department and Authority on conservation matters, and proposed changes to status of land of national and international significance
- liaising with the regional Fish and Game Council on conservation matters
- carrying out other powers delegated by the Minister of Conservation, the Conservation Act, or any other Act.

Conservation boards also have several functions under section 30 of the National Parks Act 1980. These functions include recommending the review or amendment of national park management plans and recommending approval of these plans by the Authority.

Conservation board region

The East Coast/Hawke's Bay Conservation Board's area of jurisdiction covers the area of 3,268,295.98 hectares.

The jurisdiction extends from Te Araroa (north of Gisborne) to Mangaorapa (Central Hawke's Bay) on the East coast of the North Island. The area also extends out to the 12-nautical mile limit with respect to coastal and marine issues, and out to the 200-nautical mile limit with respect to protected species.

Approximately 1.24% of New Zealand's public conservation land and area lie within East Coast/Hawke's Bay's jurisdiction.

Public conservation land and areas make up 5.47% of all land in East Coast/Hawke's Bay. This consists of:

- 175,908.72 hectares of Public Conservation Land
- 2,916.60 hectares of Marine Reserve

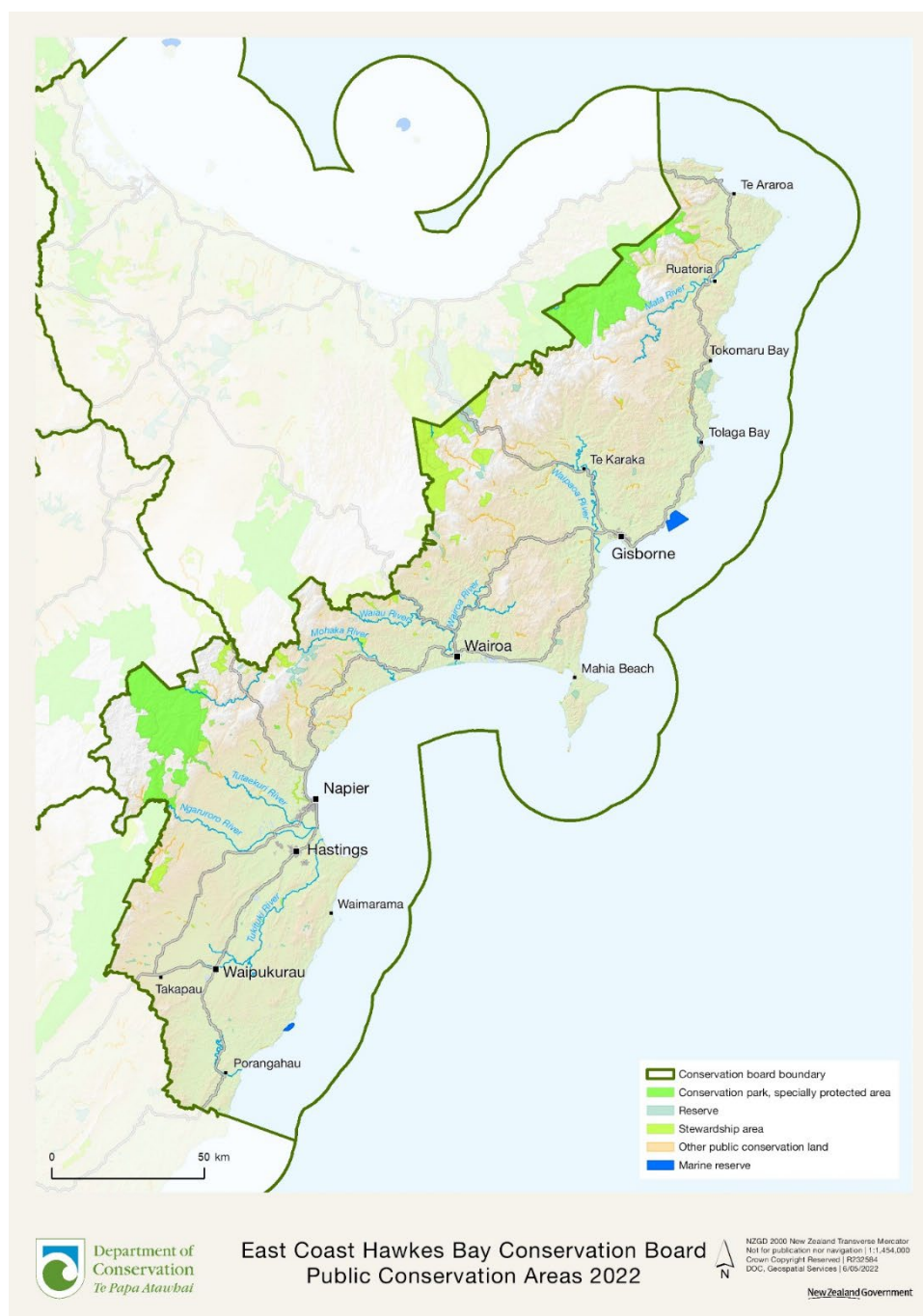
Other key conservation land involving important projects of interest to the Board include:

- Raukūmara Forest
- Te Angiangi Marine Reserve
 - Te Tapuwae o Rongokako Marine Reserve, Gisborne

Conservation features of the area

The main features of Public Conservation Land and Waters within the Board's boundaries are:

- Ruahine Forest Park – 1.91 ha
- Raukūmara Conservation Park – 51,582.44 ha
- Kāweka Forest Park – 61,461.49 ha
- 9 Recreation Reserves – 82.29 ha
- 5 Historic Reserves – 1,553.50 ha
- 61 Scenic Reserves – 10,223.85 ha
- 2 Specially Protected Areas – 160.69 ha
- 154 Marginal Strips – 2,853.72 ha
- 88 Stewardship Areas – 47,306.22 ha
- 2 Marine Reserves – 2,916.60 ha



Board functioning.

Board functions under section 6m of the Conservation Act 1987

The functions of the Board are:

1. To recommend the approval by the Authority of conservation management strategies, and the review and amendment of such strategies, under the relevant enactments
2. To approve conservation management plans, and the review and amendment of such plans, under the relevant enactments
3. To advise the Authority and the Director-General on the implementation of conservation management strategies and conservation management plans for the area within the jurisdiction of the Board
4. To advise the Authority or the Director-General
5. On any proposed change of status or classification of any area of national or international importance; and
6. On any other conservation matter relating to any area with the jurisdiction of the Board
7. To liaise with any Fish and Game Council on matter within the jurisdiction of the Board
8. To exercise such powers and functions as may be delegated to it by the Minister under this Act or any other Act.

Powers of the Board under section 6n of the Conservation Act 1987

1. Every conservation board shall have all such powers as are reasonably necessary or expedient to enable it to carry out its functions.
2. Without limiting the generality of subsection (1), each conservation board may –
3. Advocate its interests at any public forum or in any statutory planning process; and
4. Appoint committees of members and other suitable persons, and delegate to them functions and powers.
5. The power conferred by subsection (2)(a) shall include the right to appear before courts and tribunals in New Zealand and be heard on matters affecting or relating to the Board's functions.

Board membership.

There were 7 Board members for the reporting year appointed by the Minister of Conservation. Rena Kohere was appointed Chairperson and John Menneer was appointed Deputy Chairperson.

The following table lists the membership of the Board between 1 July 2023 and 30 June 2024 and their term of office.

Table 1: Board membership

Board member	Area	Term start	Term end	Term served
Rena Kohere (Chair)	Gisborne	01/07/2021	30/06/2024	3 years
John Menneer (Deputy Chair)	Wairoa	01/07/2021	30/06/2025	2 years
Doug Bailey	Napier	01/07/2020	30/06/2026	3 years
Lois Easton	Gisborne	01/07/2023	30/06/2025	1 year
Niki McCartney	Gisborne	01/07/2021	30/06/2026	3 years
Keri Ropiha	Pōrangahau	01/07/2022	30/06/2025	2 years
Jordan Tibble	Gisborne	01/07/2021	30/06/2024	2 years

Members profiles

Rena Kohere (Chairperson)

Rena (Ngāti Porou, Rongowhakaata, Te Aitanga a Māhaki, and Ngāi Tahu) grew up on whānau land at the East Cape Lighthouse, Te Araroa. She was manager of Tairāwhiti Environment Centre for 5 years and is now working in Cyclone Recovery at Gisborne District Council. She has been involved in environmental kauapa across Tairāwhiti with a particular focus on hapū and community led projects, Jobs4Nature, and regional strategy/ governance. She has experience working with local and central government, iwi and hapū, and diverse community groups and is a member of the hapū led Taiao Team for Whangaokeno.

Doug Bailey (Deputy Chairperson until 1 December 2023 - *Resignation*)

Doug grew up in Southern Hawke's Bay and now lives at Napier where he is an MPI On Farm Support Regional Advisor. He is a former Chartered Accountant and holds a Certificate in Company Directing. Doug is involved in several environmental projects including project lead for the restoration of the 65ha Te Opoko Paoa / Wanstead Swamp, Wainui Rātā, and is a pre-European history researcher in Central Hawke's Bay District.

John Menneer (Deputy Chairperson 1 December 2023 - *Elected*)

John grew up in the Hawke's Bay region and, as an avid hunter and trapper, has exceptional knowledge of the region. He has experience as an environmental researcher providing the ability to analyse and interpret research data, and knowledge of NZ geology, landscapes, and ecology.

John has experience working in high-level strategic and project management positions. He has excellent leadership skills and has developed effective working relationships with iwi, local councils, contractors, and other stakeholders.

Nicola McCartney

Niki is experienced in governance, strategic leadership, and executive management. She is a Marine Mammal Medic with Project Jonah and has developed strong connections to the local community and iwi. Ms. McCartney was nominated by former East Coast Hawke's Bay Conservation Board member Penny Shaw.

Lois Easton

Lois is a self-employed environmental consultant at Kereru Consultants and the Secretary of the Waimatā Catchment Group in Tairāwhiti. Lois has an MSc in Environmental Science and

Botany and has been working in environmental planning and resource management for over 25 years. She has a particular passion for riparian and stream restoration projects and a long track record of supporting community projects around this Kaupapa. She brings extensive experience in local government planning, nature conservation, terrestrial science and community engagement and is well connected in the local conservation community.

Keri Ropiha

Keri is of Ngāti Kahungunu ki Tamatea, Ngāti Raukawa, and Ngāi Tahu descent and has strong governance experience at local and regional Government levels and is a member of various Iwi and community boards. She provides excellent engagement with the community and strong connections with hapū and iwi on local issues. Keri offers in-depth knowledge of applying mātauranga Māori and te ao Māori to strategic planning and policy and has expertise in applying the Treaty of Waitangi / Te Tiriti o Waitangi. She recently acquired a Master of Professional Practice to enhance her Bachelor of Applied Management (Distinction).

Jordan Tibble (*Resigned 28 September 2023*)

Jordan (of Ngāti Porou, Ngāti Kahungunu, and Te Aitanga a Māhaki) is a keen conservationist, with a particular interest in native trees. She is skilled in conservation on the ground, taking an operational lead on the Whaiā Titirangi Restoration Project, and offers experience working alongside iwi, hapū, councils and stakeholders.

Board meetings.

The Board held four out of six meetings during the reporting period due to Cyclone Gabrielle. Venues for the meetings vary each year to ensure wide coverage and enable members of the public in the district to attend meetings and access the Board.

Table 2: Board meeting dates and location

Board Meeting Dates	Meeting location and venue
1 December 2023	DOC Office, 59 Marine Parade, Napier
1 March 2024	DOC Office, 63 Carnarvon Street, Gisborne
2 and 10 May 2024	MS Teams and DOC Office, 215 Hastings Street, Napier
5 July 2024	MS Teams

Attendance

The table below summarises the number of Board meetings attended by members out of the total number of meetings held during the year.

Table 3:

Board member	Evening Admin Meetings	Board meetings
Rena Kohere	0/4	4/4
Doug Bailey	1/4	4/4
John Menneer	1/4	4/4
Niki McCartney	2/4	4/4
Keri Ropiha	0/4	3/4
Lois Easton	0/4	2/4
Jordan Tibble	0/4	0/4

Field trips and site inspections

Field trips are an excellent opportunity for Board members to become more aware of conservation issues within their region.

Table 4: Field trips and site inspections

Field trip date	Field trip destination
10 May 2024	Lake Opaupahi Kiwi Creche

ECHB Conservation Board 10 May 2024 Field Trip



Figure 2 Lake Opaupahi Kiwi Creche with ECHB CB members, DOC and Kiwi Creche Staff

Department involvement in Board meetings

Department staff also attended throughout the year.

Alice Heather (LNI) and Jade King-Hazel (CNI), Regional Directors, attended meetings and provided Directors updates.

Rachael Mora (LNI) and Wihi Meelker-Ngatai (CNI), Statutory Managers, attended meetings and provided Statutory Managers' updates.

Kathy Houkamau (Acting Operations Manager – Hawkes Bay), Grant Bennett (Operations Manager – Hawkes Bay) and Matt Tong (Operations Manager – Gisborne) attended meetings when they took place in their operational Districts to provide District Context and District Operations Reports. Meetings taking place outside of District were attended virtually via MS Teams.

Administrative Support is provided to the Board by the Board Support Officer (Claire Jacobs), who arranged, attended, and provided administration services to Board Meetings.

Annual Work Plan

Please refer to Appendix 1 for the full Board Annual Work Programme.

Statutory activity

East Coast Hawkes Bay Conservation Management Strategy (CMS)

The CMS is currently on hold and will be looked at again during 2024/2025.

Advice and advocacy

All Board members have responsibility for liaising with other groups when opportunities arise, and some members have specific roles in liaison. The Board appointed various members to liaise with other groups and agencies.

Table 5: Board liaisons and representatives

Board member	Group/agency/organisation
Rena Kohere	Te Tapuwae o Rongokako Marine Reserve
Doug Bailey	Hawkes Bay Regional Council, Te Angiangi Marine Reserve, Biodiversity Hawkes Bay
John Menneer	Fish & Game Hawkes Bay
Lois Easton	Gisborne District Council Fish & Game Hawkes Bay
Niki McCartney	Gisborne District Council

Other Conservation Boards liaison

The Board allocates liaison roles with their immediate neighbouring Boards.

Rena Kohere – Bay of Plenty Conservation Board and National Board Chairs

John Menneer – Tongariro/Taupo Conservation Board

Niki McCartney – Chatham Islands Conservation Board and Wellington Conservation Board

Authority liaison

Greg Duly is the NZCA member liaison with the Board and he attended one board meeting.

The Board received the agenda, papers, and minutes of the NZCA meetings, and the Board Chair received regular communication from the NZCA.

Department advice

The Board provided advice to the Department on the following issues:

- The Waiver of the marginal strip – Pakowhai
- Te Angiangi Marine Reserve Review.

Community visibility

The Board maintains a presence on the Department's website. Updates from the Board were provided throughout the year on activities undertaken.




There was an increase in attendance at Public Forum's for the reporting year with participation from:

- Sam Roil – Mountain Biking review in CMS
- Sam Gibson – hunting and customary harvest on PCL.
- Johan September – Dog Kiwi Aversion Training
- Grant Vincent – Forest and Bird

Iwi liaison and advocacy

In addition to Board meetings, board members work closely with iwi and hapū in the rohe. Refer to the Work Plan for further information.

Appendix I –Annual Work Plan

Key:	Means...
	Action under way and on track, ongoing or completed.
	Potential for concern, early flag.
	Risks identified, delay or concern.

KEY FOCUS AREAS	OBJECTIVES	OUTCOMES	ACTIONS	Examples of Progress	RAG
Relationship with Iwi/Hapu	<ul style="list-style-type: none"> The board embeds the principles of the Treaty of Waitangi in accordance with the obligations of section 4 of the Act in all aspects of work 	<ul style="list-style-type: none"> Relationships with Iwi/Hapu are improved, and Iwi/Hapu are contributing to decision making through a partnering process. 	<ul style="list-style-type: none"> Board members understand their responsibilities under section 4 of the Act. Support DOC in their engagement with Iwi/Hapu. 	<ul style="list-style-type: none"> Met with Tatou Tatou Ongoing engagement with Ngāti Kere in generational review DB attended Ngāti Kahungunu Fishhook symposium Met with Maungaharuru Tangitu Trust J4N crew at Lake Opouahi. 	
Biodiversity	<ul style="list-style-type: none"> Supporting the implementation of Te Mana o te Taiao and local initiatives that enhance biodiversity on land and marine environments 	<ul style="list-style-type: none"> The ECHB region has put in place the necessary processes and systems for the implementation of Te Mana o te Taiao. 	<ul style="list-style-type: none"> Engage with Biodiversity HB Advocate for TMoTT in liaison with agencies. Supporting pest control initiatives. 	<ul style="list-style-type: none"> Regular liaison report from Biodiversity HB Two face-to-face meetings with Biodiversity HB Suggest LNI and ENI engage with catchment groups and Biodiversity HB 	

KEY FOCUS AREAS	OBJECTIVES	OUTCOMES	ACTIONS	Examples of Progress	RAG
Raukumara Conservation Park and Kaweka Park	<ul style="list-style-type: none"> The Board supports successful working relationships with project stakeholders involved in pest and predator control 	<ul style="list-style-type: none"> The Board has effective working relationship with stakeholders in The Raukumara and Kaweka Forest Parks. 	<ul style="list-style-type: none"> Board hosts project stakeholders to present an annual/biannual update to board members. Board field trip to site 	<ul style="list-style-type: none"> Invited Raukumara stakeholders to attend Progress Kaweka Forest Park is in recovery due to Cyclone Gabrielle. 	
Community	<ul style="list-style-type: none"> Increase board engagement and networking with the community to understand and reflect their interests in the board's work. 	<ul style="list-style-type: none"> Increased community engagement with the board. Timely responses to issues raised by the community. 	<ul style="list-style-type: none"> Board Identifies key community groups and liaises with these groups. Proactively invite community to speak at board public forums 	<ul style="list-style-type: none"> Understanding the role of community catchment groups. Exploring better engagement with ENI regarding Tairāwhiti Board Introduction letter drafted for distribution to community conservation groups. Request to speak at the upcoming HB Community Catchment Hui. 	

KEY FOCUS AREAS	OBJECTIVES	OUTCOMES	ACTIONS	Examples of Progress	RAG
Marine Reserves	<ul style="list-style-type: none"> Ensure the planning and implementation of generational reviews of Te Angiangi and Te Tapuwae o Rongokako Marine Reserves. 	<ul style="list-style-type: none"> Completion of generational review Both marine reserves have a bright future with a management plan in place 	<ul style="list-style-type: none"> Updates on progress and status of generational reviews from liaison people. Active participation in generational reviews. 	<ul style="list-style-type: none"> Board representation at every step of the review process Te Angiangi Marine Reserve generational review is in a draft report stage and will go out in Aug to the public. 	
Working with the Department of Conservation	<ul style="list-style-type: none"> Work collaboratively with the Operations Director and understand their regional priorities. Work collaboratively with the Statutory Manager and understand their operational priorities and challenges 	<ul style="list-style-type: none"> Communicating regional priorities with stakeholders. Board understands critical operational issues and any impact on strategic regional priorities and integrated strategy 	<ul style="list-style-type: none"> Agreed process for reporting on strategic regional priorities to board. Identify risk, opportunities and successes and communicate these to the NZCA and the Ministers Communicate the information from liaison activity back to the department. 	<ul style="list-style-type: none"> Accepted an invitation to attend a strategic workshop with the LNI Director. Conservation board facilitated a relationship to progress the distribution of the HB Endowment fund. 	
Climate Mitigation and Adaptation	<ul style="list-style-type: none"> Embed climate mitigation and adaptation throughout board planning and activity 	<ul style="list-style-type: none"> Contribution to reduced impacts of greenhouse gases. Implementation of DOC's Climate Change Adaptation Action Plan (CCAAP) in ECHB regions 	<ul style="list-style-type: none"> Advocate for biodiversity and heritage within regional climate adaptation planning with relevant agencies/stakeholders. Hold 2 online meetings per year. Monitor implementation of CCAAP in ECHB regions 	<ul style="list-style-type: none"> Cyclone Gabrielle disrupted ACTIONS and the focus was on recovery instead of adaptation planning 	

KEY FOCUS AREAS	OBJECTIVES	OUTCOMES	ACTIONS	Examples of Progress	RAG
Cyclone Recovery	<ul style="list-style-type: none"> Support DOC and community in cyclone recovery. 	<ul style="list-style-type: none"> Improved processes and resilience in Cyclone readiness, response, and recovery. 	<ul style="list-style-type: none"> Advocate and prioritise for practical reinstatement of DOC sites and infrastructure for community, biodiversity, and heritage. 	<ul style="list-style-type: none"> Cyclone Gabrielle disrupted ACTIONS and the focus was on recovery instead of adaptation planning. Successfully advocated for reinstatement of close to town reserves. 	



Figure 3 Packhorse Crayfish - Te Tapuwae o Rongokako Marine Reserve

This report is presented to the New Zealand Conservation Authority as required by the Conservation Act 1987 and distributed to interested parties. Members of the public are welcome to attend conservation board meetings. If you would like more information on the East Coast Hawkes Bay Conservation Board, please see the website www.conservationboards.org.nz or contact the Board Support Officer, at the Department of Conservation in Palmerston North phone 027 417 5246 or e-mail Claire Jacobs cljacobs@doc.govt.nz.