



# East Coast Bay of Plenty Conservation Board Annual Report 2013 - 2014

Presented to the New Zealand Conservation Authority

Pursuant to Section 6(O) of the Conservation act 1987

Serviced by the Department of Conservation, Rotorua office

PO Box 1146 99 Sala Street Rotorua.

## Contents

1. Chairperson's report.....	3
2. Introduction of the Board.....	5
3. Membership of the East Coast Bay of Plenty Board.....	5
4. The area of the Board.....	6
5. Activities of the Conservation Board.....	7.
• Board meetings and field trips.....	7
• Board Committees.....	8
• Other meetings and activities attended by the Board.....	9
6. Functions under section 6M of the Conservation Act 1987.....	9.
• Section 6M <sub>1</sub> (A).....	9
• Section 6M <sub>1</sub> (b).....	10.
• Section 6M <sub>1</sub> (c).....	10
• Section 6M <sub>1</sub> (d) (ii).....	10
• Section 6M <sub>1</sub> (f).....	10
7. Powers under Section 6N of the Conservation Act 1987.....	11.
• Section 6N <sub>2</sub> (a).....	11
• Section 6N <sub>2</sub> (b).....	11
8. Giving effect to the principles of the treaty of Waitangi.....	12
9. Liaison.....	12
• Minister of Conservation.....	12
• New Zealand Conservation Authority.....	12
• Other Conservation Boards.....	12.
• Other parties.....	13

## 1. Chairperson's report

During this period the Board operated with eight members spread throughout the Conservancy. Although the appointments of some members were due to cease in 2013, the Minister asked members to continue until the new Board structures were finalised. Subsequently, all positions but one were terminated in April. This may create pressures on the surviving Board member, Ken Raureti, and the Department to ensure that continuity of knowledge and processes continues with the new members. This will be important especially for the Whirinaki Te Pua a Tane CMP. Disappointment has been expressed by the Board that this CMP was not completed during the Board's tenure.

During this period the Board was shocked to learn of the sudden death of Joe Doherty in February. Joe was a recent and valued Board member. He had taken up a role with the Department and was working closely with Ian Pirani, a Board member, on a new initiative. The Board was represented at his tangi by the Board chairman and Ian.

The Board has representatives on three organisations. These are Te Tapatoro a Toi JMC, Te Tapuwae o Rongokako Marine Reserve, and Fish and Game. Regular reports on these organisations were given by the representatives to the Board.

Three meetings were held during this period at Rotorua (2) and Tauranga. A site visit to Mokoia Island in Lake Rotorua was a highlight of the year, especially with Board member Ken giving us a comprehensive background to important historical events which had taken place there.

Other events at which Board members were present were the Tarawera Trail opening, the final on site review of the Tui Mine remediation, and the Tauwhare Pa entrance opening.

In addition Board members visited the New Talisman Mine site to assess implications for the Department as this is in a DOC heritage area in the Karangahake Gorge. Mining is a sensitive issue, and it is expected that there will be more passionate discussion on this by the public. A report on the mine and the department's decision is in the Board's documents.

The final link in the Hauraki Rail Trail (HRT) within our conservancy - the Waikino to Waihi section - was opened in September. DOC has been a major player in this development as the Trail through the gorge and to Waikino is managed by the department. It also manages the heritage mining sites within the gorge, the Victoria Battery and railway station at Waikino, the vintage rail line connecting Waikino to Waihi, and the Waihi Station complex. These are major attractions in the Northern Kaimai area. The HRT is now the most popular Rail Trail in the country. This also connects with the Kaimai Heritage Trail being developed by the Department. Congratulations must go to the Department, especially the Tauranga area office, for its continued support in these projects.

A close interest was taken in the developments over the Rena grounding and the Te Urewera settlement.

In February the Chairman attended a meeting in Taupo with the other Chairs of the new Central Region. In attendance were recently appointed Level 3 and 4 managers. The purpose of the meeting was to discuss the Review of Conservation Boards, Board servicing and to discuss the changes in processes with the Boards.

The Chairs raised a range of suggestions which they felt were important for Boards to function efficiently. These included standardisation and consistency of Statutory reporting, electronic reporting and recording for members, inter-Board meetings, protocols for dealing with DOC vis a vis Board on contentious issues, and others. Although notes were taken, no report of the meeting was forwarded so progress on the Chairs suggestions is unknown at this stage.

Because of the changes in the conservancies and staffing changes the CMS was postponed until the new Boards were in place. It is anticipated that there will be consistency in the format and Places between the three Conservation Boards in the Central Region.

Members have expressed disappointment in not having their contacts and skills utilised more during the year, and have felt that they were there primarily to fulfil a Departmental objective and did little to influence policy. This has been due in part to the focus on the restructuring of the Department. It is hoped that in the future the Board will be able to undertake a closer partnership role with the Department.

I should finally like to thank my fellow Board members for their continued commitment throughout this difficult year. Members John Wauchop and Vicki Thorpe from the Gisborne area continued to attend meetings and take an active part in deliberations, even though they were aware that their area was no longer to be part of the new conservancy. All members continued to take an active interest in the organisations to which they belonged outside of the Board, even through illness sometimes, and reported back on significant issues and progresses taking place in these. This has been most valuable for Board members to develop a wider view of the communities within the conservancy.

I wish the new Board every success in an exciting future conservation future.

**Mike Hayden**  
**Chairperson**  
**ECBOP Conservation Board**

## 2. Introduction to the Board

The East Coast Bay of Plenty Conservation Board is one of the thirteen statutory bodies appointed by the Minister of Conservation under Section P of the Conservation Act 1987. The functions and powers of the Board are outlined in Sections 6M and 6N respectively. The role of the Board as laid out in the Act is as follows:

- To recommend the approval of Conservation Management Strategies;
- To approve Conservation Management Plans;
- To advise on how Conservation Management Strategies and Plans are being put into practice;
- To advise on proposed changes to the status of land areas of national and international significance;
- To advise on proposals for new walkways;
- To liaise with Fish and Game Councils on conservation matters;
- To carry out the other powers delegated to the Board by the Minister of Conservation, the Conservation Act or any other Act;
- To advocate its interests at any public forum or in any statutory planning process.

These functions and powers, where exercised, are reported on separately within this report.

## 3. Membership of the Board

Members are appointed to the East Coast Bay of Plenty Conservation Board by the Minister of Conservation. Board members represent a wide variety of interests and reside in communities right across the Board's region. The Board membership and meeting attendance during the report period was as follows:

Board Members	Home Location	Meetings Attended (3 held)
<b>Michael Hayden (Chairman)</b>	Waihi	3
<b>Ian Pirani</b>	Katikati	3
<b>John Wauchop</b>	Gisborne	2
<b>Malcolm Whittaker</b>	Ohope	3
<b>Vicki Thorpe</b>	Gisborne	2
<b>Neuton Lambert</b>	Tuai	2
<b>Ken Raureti</b>	Rotorua	2
<b>Derek Gosling</b>	Opotiki	2

## 4. The Board's area

The East Coast Bay of Plenty Conservancy extends from the eastern and western part of the Bay of Plenty stretching in a ribbon like flow from west of Tauranga city, inland to the Waikato river, embracing Rotorua city and its volcanic lakes, across to Gisborne and up to the East Cape. The total area of the conservancy is 2.3 million hectares with public conservation lands making up approximately 27 % of the region.

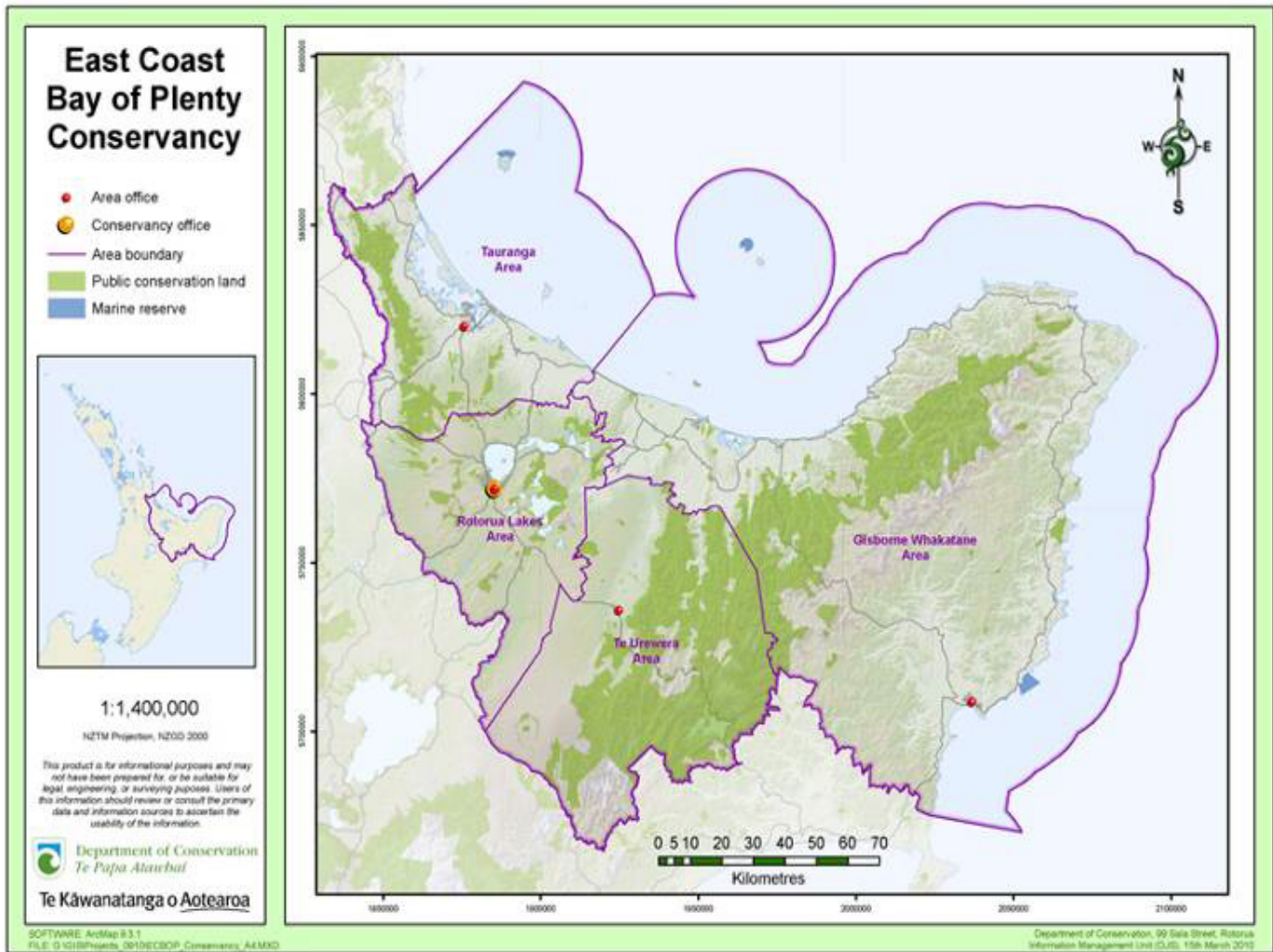
Forests such as Te Urewera and Whirinaki te Pua a Tane, Raukumara and Kaimai Mamaku Conservation Parks are enjoyed by a wide range of recreational users from around and beyond our region. These ancient ranges are connected intimately with significant coastal forest and dunelands that lie at the fringes of the Conservancy and continue into the depths of the marine world through to various islands and beyond.

Wetland features, associated vegetation and the geothermal wonders of the Rotorua Lakes and surrounding reserve network also provide unique features to an area that is as diverse in species as it is in people groups and communities.

This is a Conservancy rich in historic and cultural sites, boasting the landing place of the Horouta waka and Te Ikaroa-a-Rauru waka and the Turanganui River Historic Precinct where the nationally significant Cook Landing Site National Historic Reserve are located. The rock, Te Toka-a-Taiau, with links to all iwi of Tairāwhiti is important as a tribal boundary marker and is the site of the first hongi between European and Māori.

This physical location represents our ongoing responsibility to iwi under the Treaty of Waitangi as the Conservancy area is homeland to the whānau, hapu and iwi of Pare

Hauraki, Tauranga Moana, Te Arawa Federation, Mataatua Waka, Te Tairāwhiti, Turanga-nui-a-kiwa and Te Urewera. An estimated 300,000 people dwell in or are connected to this Conservancy.



## 5. Activities of the Board

### 5.1 Board meetings and Field trips

The Board met 3 times in the period 1<sup>st</sup> July 2013 – 30<sup>th</sup> June 2014. These dates were:

6<sup>th</sup> September 2013 ( Tauranga)

6<sup>th</sup> December 2013 ( Rotorua)

7<sup>th</sup> March 2014 (Tauranga)

A field trip to Mokoia Island was held on 7<sup>th</sup> December 2013.

## 5.2 Board Committees

Committee	Board Membership
National Issues / NZCA Liaison	Mike Hayden
Neighbouring Board Liaison	Mike Hayden
Pest Management Issues	Ian Pirani
Biodiversity (eg. protected species)	John Wauchop
Treaty of Waitangi (Section 4, Conservation Act)	All Board members
Board Work Planning	Mike Hayden Ian Pirani
Statutory Planning (Submissions etc)	Mike Hayden Derek Gosling
Local Government and TLA Liaison	Mike Hayden Malcolm Whittaker Derek Gosling
Eastern Region Fish and Game Council Liaison	Ian Pirani
Recreation and Historic	Neuton Lambert Mike Hayden
Islands	Mike Hayden Vicki Thorpe
Kaimai-Mamaku Forest	Mike Hayden Ian Pirani
Whirinaki – Te Pua a Tane	Derek Gosling Malcolm Whittaker
Marine Reserves	Vicki Thorpe
Wetlands	Ian Pirani Malcolm Whittaker
Volcanic and Geothermal Environments	Derek Gosling Mike Hayden
Coastal Ecosystems, Forests and Dunelands	Derek Gosling Malcolm Whittaker
Raukumara and Te Urewera	Neuton Lambert Derek Gosling Mike Hayden



### 5.3 Other meetings and activities attended by Board Members



*Ken Raureti walking beside Rotorua Mayor Steve Chadwick at the opening ceremony of the Tarawera trail.*

The Tarawera Trail was officially opened in December 2013 with Ken Raureti attending the opening ceremony.

Ken Raureti also represented the Board as part of the Mokoia Island Pest incursion response in February 2014 and also facilitated rangatahi volunteering as part of this response. The presence of rodents on the island jeopardised populations of several bird species included translocated kiwi. DOC returned the island to pest free status in April 2014.

The Conservation Inc. Conference in October 2018 was also attended by Ken Raureti and included a workshop on integrated pest management.

### **6.1 SECTION 6M 1(A) TO RECOMMEND THE APPROVAL BY THE CONSERVATION AUTHORITY OF CONSERVATION MANAGEMENT STRATEGIES AND THE REVIEW AND AMENDMENT OF SUCH STRATEGIES, UNDER THE RELEVANT ENACTMENTS**

Although withdrawn in August 2009 by the Conservancy and the Board the final draft of the BOP CMS 2008-2018 has been made available to the general public with the explanation that it is being used as ‘a guide for the management of the previous Bay of Plenty portion of the new Conservancy and its Places’ Although the statutory tool for decision making will be the previous BOP CMS 1997-2007 the Board agreed that final draft would be used for the purposes of CMS reporting with reference to the existing CMS to be included in these reports.

Helen Neale – Partnerships Manager, Rotorua – updated the Board in December 2013 that it was the intention of the Management Planning team to start to look at the ECBOP CMS in the near future although no time frame had been set.

## **6.2 SECTION 6M 1(B) TO APPROVE CONSERVATION MANAGEMENT PLANS AND THE REVIEW AND AMENDMENT OF SUCH PLANS, UNDER THE RELEVANT ENACTMENTS**

The Ngati Whare Settlement is the final settlement of all Ngati Whare's historical claims with the major provision in their cultural redress package being the joint governance of the Whirinaki Te Pua-a-Tane Conservation Park. This is to be achieved through the development and joint approval of a CMP for Whirinaki and the Board.

The Board were made aware in September 2013 that a draft Conservation Management Plan for Whirinaki Te Pua-a-Tane Conservation Park would be publically notified by January 2014. However, this date was later amended and the board were updated in March 2014 that the drafting of this plan was underway but not complete. This work is ongoing and will require the new Board to complete this work with Ngati Whare.

## **6.3 SECTION 6M 1(C) TO ADVISE THE CONSERVATION AUTHORITY AND THE DIRECTOR- GENERAL ON THE IMPLEMENTATION OF CONSERVATION MANAGEMENT STRATEGIES AND CONSERVATION MANAGEMENT PLANS FOR AREAS WITHIN THE JURISDICTION OF THE BOARD**

Henry Weston (consultant) presented t a monitoring report on section 1.3 Conservation of Natural Resources of the draft BOP CMS 2008 – 2018 in March 2014. The report concluded that significant progress has been made towards achieving most of the objectives set in the draft CMS. Of particular significance has been the increased effort around the volcanic and geothermal landscapes of the Rotorua area.

## **6.4 SECTION 6M 1(D) (II) TO ADVISE THE CONSERVATION AUTHORITY AND THE DIRECTOR-GENERAL ON ANY OTHER CONSERVATION MATTER**

Accompanied by DOC staff, Mike Hayden and Ian Pyriani, on behalf of the Board, made a site visit to New Talisman mine, Karangahake in August 2013 in response to an Access Arrangement Application from New Talisman. The purpose of this application was for bulk sampling, not mining. Recreational, aquatic and historic values were assessed and it was concluded that the Board saw no reason to object this application provided any concerns notes in the report were addressed.

## **6.5 SECTION 6M 1(F) TO LIAISE WITH ANY FISH AND GAME COUNCIL ON MATTERS WITHIN THE JURISDICTION OF THE BOARD**

The Board ensures that the Eastern Region Fish and Game Council, through Rob Pitkethley, are sent Board meeting agendas and minutes to keep them informed of the Board's work.

Regular attendance by the Board representative, Ian Pirani, at Fish and Game Council meetings has ensured that a sound and progressive relationship has been maintained.

Ian reported on the effort being put into encouraging children to learn how to fish. It was reported that Fish and Game have a much better understanding of the roles of the Conservation Board role and DOC and the board suggested staff from each organisation should attend regular meetings of other organisations to aid this understanding.

## **7. POWERS UNDER SECTION 6N OF THE CONSERVATION ACT 1**

### **7.1 SECTION 6N 2(A) EACH BOARD MAY ADVOCATE ITS INTEREST AT ANY PUBLIC FORUM OR IN ANY STATUTORY PLANNING PROCESS**

The Board considered a proposal from the Rotorua District Council made in September 2013 to vest and set apart portions of the marginal strips along the Torepatutahi Stream for water supply purposes which required the acquisition of marginal strip areas. Information was provided to the board which showed the actions and statutory processes carried out to date. The Board considered the information and confirmed support of the proposal in February 2014.

### **7.2 SECTION 6N 2(B) EACH BOARD MAY APPOINT COMMITTEES OF MEMBERS AND OTHER SUITABLE PERSONS AND DELEGATE TO THEM FUNCTIONS AND POWERS**

#### **Joint Management Committee - Te Tapatoru a Toi**

As part of the Ngati Awa settlement, the Ngati Awa Claims Settlement Act 2005 required the Minister of Conservation to delegate certain reserve management powers in order to recognise Ngati Awa values and relationships with three places - Moutohora (Whale Island) Wildlife Management Reserve, Ohope Scenic Reserve and Tauwhare Pa Scenic Reserve. The Joint Management Committee was formed 2006 and is known as 'Te Tapatoru a Toi'.

The Te Tapui Tokotoru Conservation Management Plan approved in October 2008 aims to achieve the purpose of the Ngati Awa Claims Settlement Act 2005 and the requirements for reserve management planning under the Conservation Act 1987. This committee has representatives nominated by Ngati Awa, the Department of Conservation and the East Coast Bay of Plenty Conservation Board. Derek Gosling has been the representative since September 2012.

#### **Te Tapuwae o Rongokako Marine Reserve**

Vicki Thorpe represented the Board meetings of Te Tapuwae O Rongokako Marine Reserve. Minutes of each meeting were supplied to the Board throughout the year. Vicky encouraged the group to start up a charitable trust to seek funds for research. This was initiated during the reporting period.

## **Goat Report**

Although not an area within the jurisdiction of the board, Ian Piriani continued to provide updates to the board regarding goat control with the view that this topic could become more relevant to ECBOP in the future.

### **8.0 Giving effect to the Treaty of Waitangi**

The Board gives effect to the principles of the Treaty of Waitangi by:

- Monitoring the way in which the Conservancy is giving effect to Section 4 of the Conservation Act;
- Engaging in discussions on Treaty of Waitangi issues through its representative on the Ngati Awa/Department of Conservation Joint Management Committee (Te Tapatoru a Toi)
- Holding meetings on marae and having field trips and inspections and engaging meaningfully with iwi representatives and local hapu;
- Ensuring that it has meaningful processes for iwi input to its work;
- Supporting the conservancy with settlement implementation where it can.

The board were introduced to the Huia Lloyd - Pou Tairangahau (Strategic Iwi relationships manager) who is part of the Kahui Kaupapa Atawhai (KKA) of the Department which plays an important role in building cultural awareness and developing DOCs capability for working in a Maori dimension. The KKA also has a role in ensuring the requirements of Section 4 of the Conservation Act 1987 are met. The Board requested Pou Tairangahau presence at each Board meeting if possible.

## **9. Liaison**

### **9.1 MINISTER OF CONSERVATION**

The Board wrote to the Minister in September 2013 regarding the conservation boards review and extend an invitation to the upcoming December Board dinner.

### **9.2 NEW ZEALAND CONSERVATION AUTHORITY**

Regular correspondence from NZCA Chairperson is also appreciated as a means of keeping the Board up to date on NZCA meetings and activities. The minutes and meeting agendas of the NZCA are received from Katrina Edwards, Statutory Bodies Advisor in National Office.

### **9.3 OTHER CONSERVATION BOARDS**

The Board appreciates the agendas, minutes and other correspondence received from the following Conservation Boards, throughout the year:

- West Coast Tai Poutini Conservation Board
- Canterbury-Aoraki Conservation Board

#### **9.4 Other organisations**

The board has noted correspondence from

- Geoscience Society of New Zealand
- Te Tapuwae O Rongokako Marine Reserve Committee
- Bay of Plenty Regional Council
- New Zealand Walking Access Commission

DRAFT