

Figure 2: Bathymetry of the survey area, integrated with previous Firth of Thames data  
Red dots show ground-truth stations (see figure 3 for details)

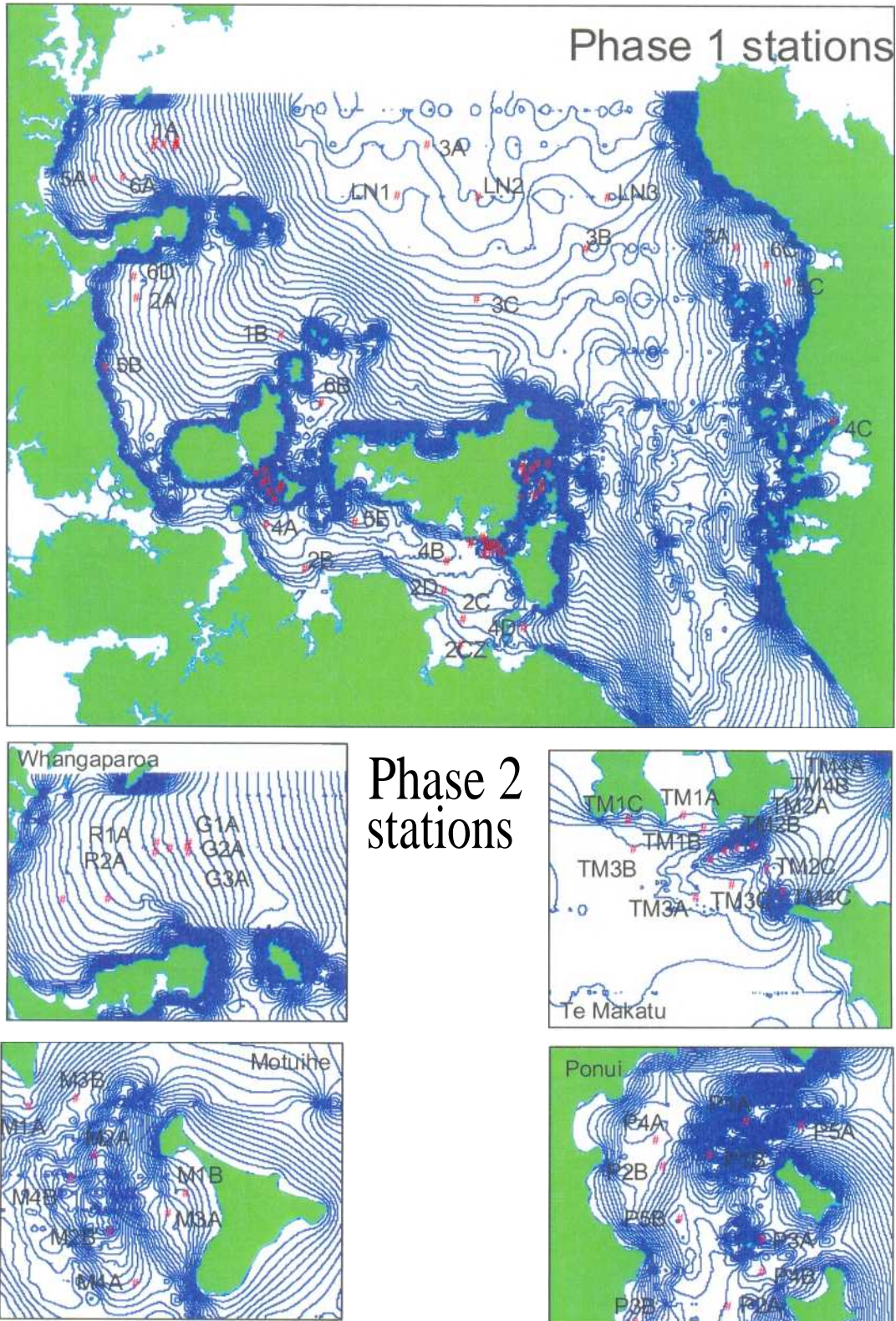


Figure 3: Phase 1 and 2 ground-truth stations

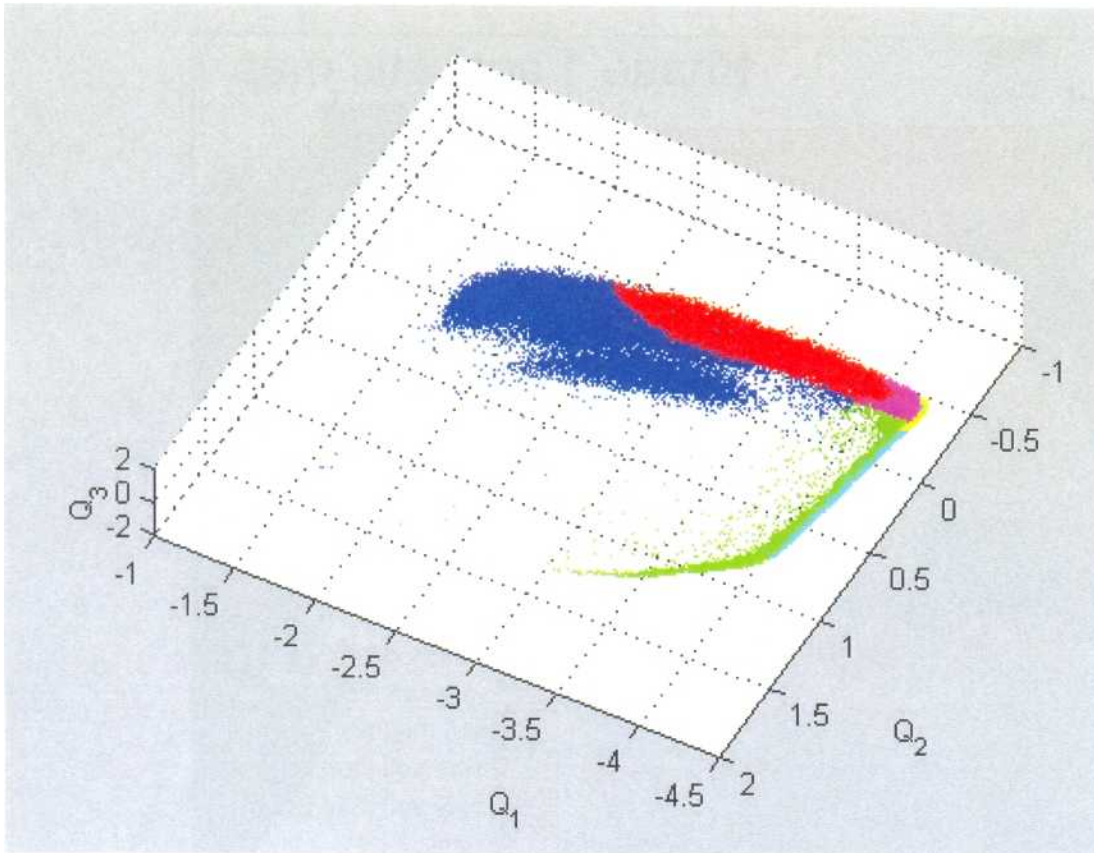


Figure 4: Phase 1 QTC data cloud. Red, class 1; light blue/turquoise, class 2; yellow, class 3; green, class 4; pink, class 5; dark blue, class 6.

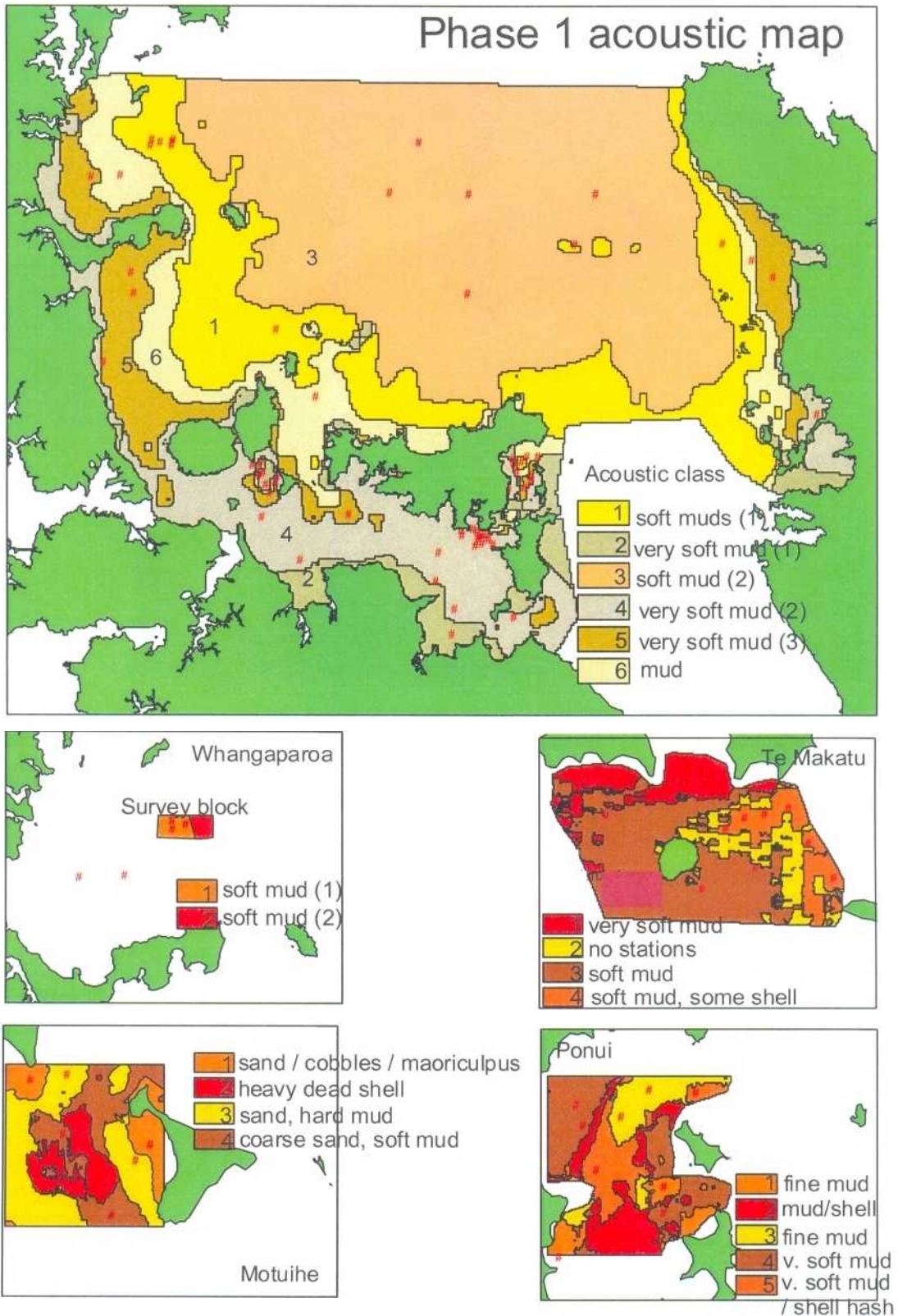


Figure 5: Phase 1 and 2 acoustic class maps (note that the same colour classes on different maps do not equate to the same acoustic classes)