

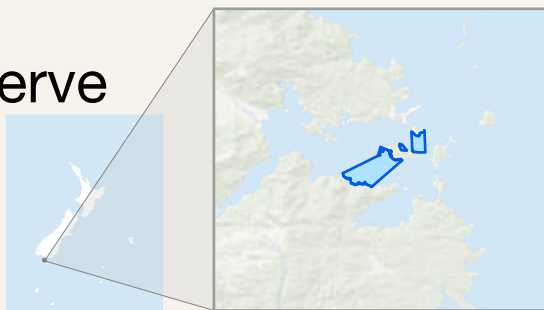
# Ulva Island - Te Wharawhara Marine Reserve



GCS WGS 1984 | 13/08/2024  
Not for navigation  
Crown Copyright Reserved



New Zealand Government



Letter Code	Lat (DDM)	Long (DDM)
A	46° 56.777' S	168° 3.719' E
B	46° 56.034' S	168° 6.322' E
C	46° 56.005' S	168° 6.335' E
D	46° 55.598' S	168° 6.555' E
E	46° 56.323' S	168° 8.056' E
F	46° 57.506' S	168° 5.78' E
G	46° 55.514' S	168° 7.925' E
H	46° 55.56' S	168° 8.086' E
I	46° 55.572' S	168° 8.122' E

Letter Code	Lat (DDM)	Long (DDM)
J	46° 55.847' S	168° 8.424' E
K	46° 55.829' S	168° 8.805' E
L	46° 54.937' S	168° 8.835' E
M	46° 54.948' S	168° 9.765' E
N	46° 56.005' S	168° 9.722' E
O	46° 55.992' S	168° 9.279' E
P	46° 55.907' S	168° 08.802' E
Q	46° 55.874' S	168° 08.803' E