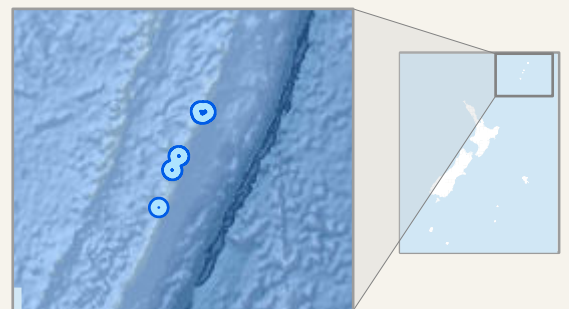


Kermadec Islands Marine Reserve



Letter Code	Lat (DDM)	Long (DDM)	Letter Code	Lat (DDM)	Long (DDM)
A	30° 12.71' S	178° 10.892' W	H	29° 29.505' S	178° 0.623' W
B	30° 25.56' S	178° 20.326' W	I	29° 10.07' S	178° 11.66' W
C	30° 42.207' S	178° 24.77' W	J	29° 2.287' S	178° 0.096' W
D	30° 36.388' S	178° 47.272' W	K	31° 30.809' S	178° 40.961' W
E	30° 21.16' S	178° 40.205' W	L	31° 29.967' S	178° 59.113' W
F	30° 10.166' S	178° 39.611' W	M	31° 15.836' S	179° 8.851' W
G	29° 7.802' S	177° 40.078' W	N	31° 5.596' S	178° 58.562' W

0 36 km

GCS WGS 1984 | 13/08/2024
Not for navigation
Crown Copyright Reserved



New Zealand Government