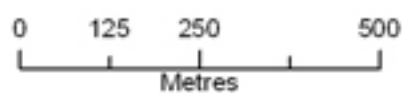
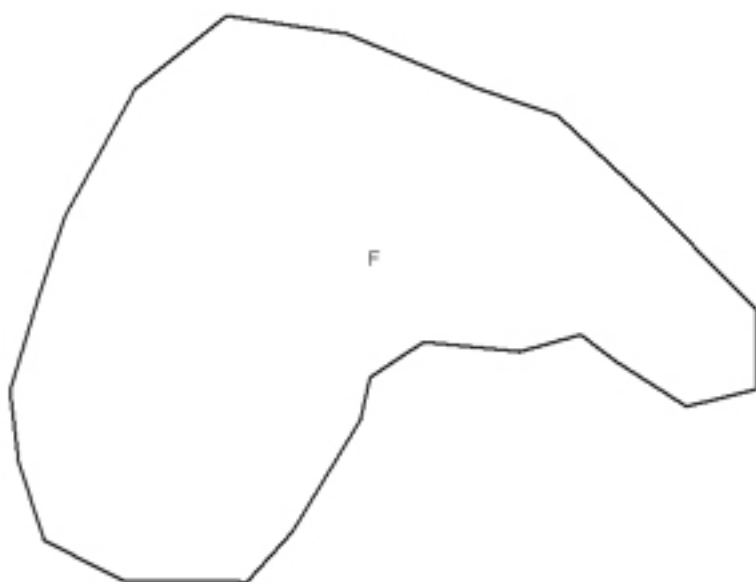


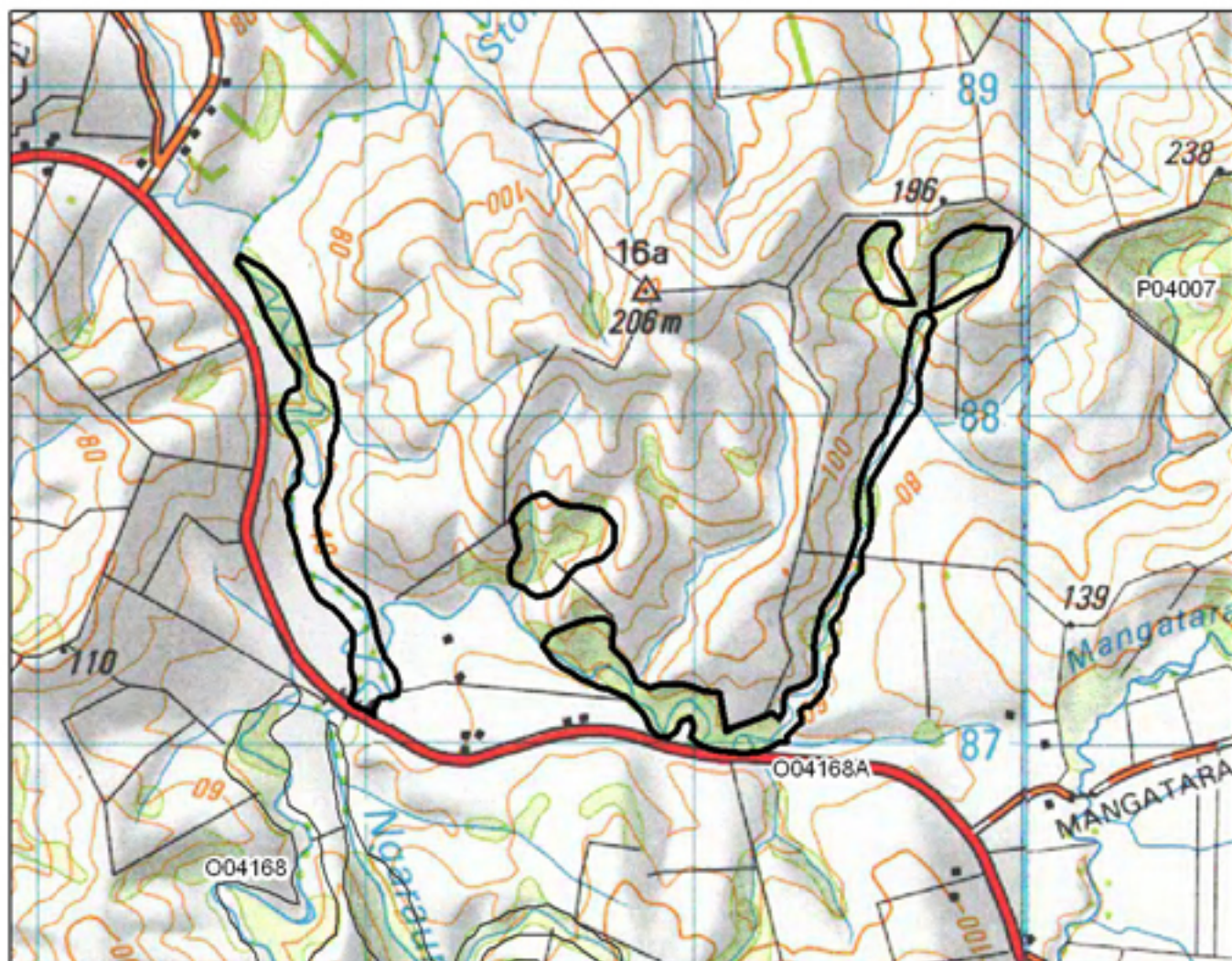
### O04012A Taratara/Hobbs Rd



- S= Shrubland
- F= Forest
- W= Wetland
- E= Estuarine







## O04168A Stony Stream

0112.825 450 Meters

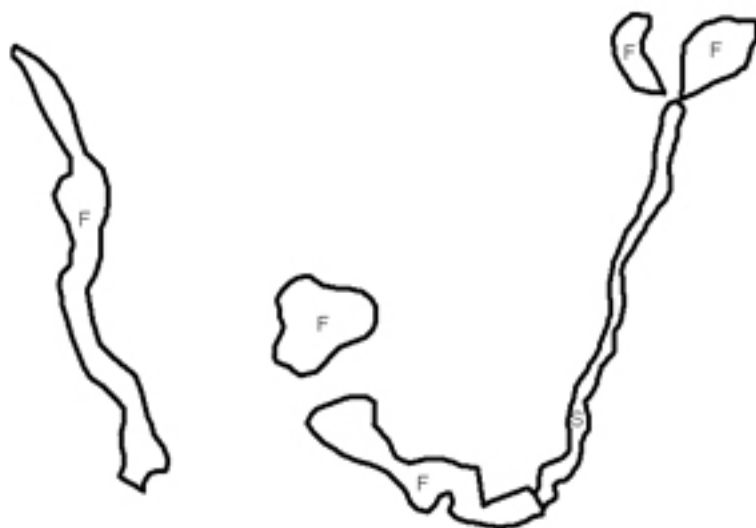


S= Shrubland

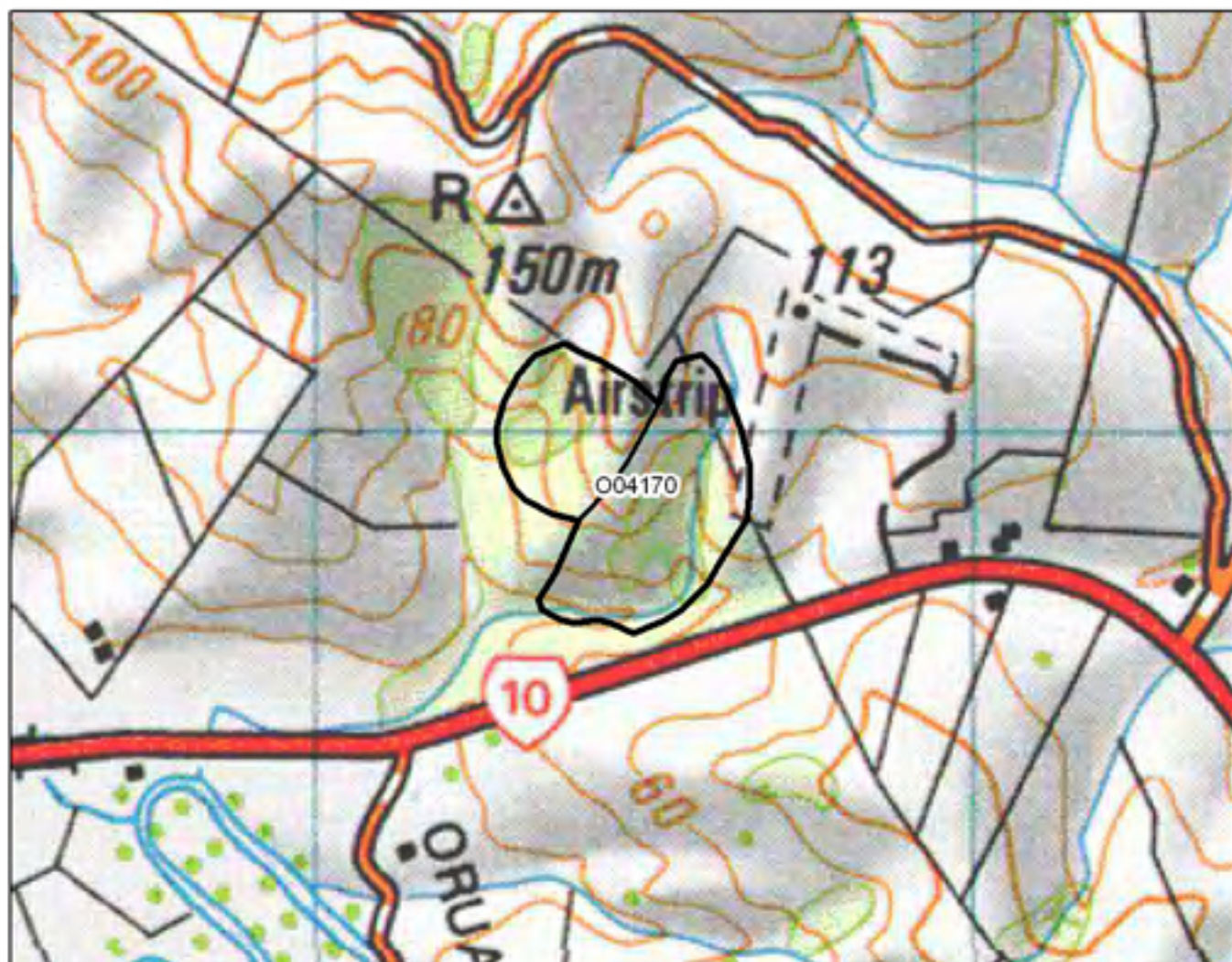
F= Forest

W= Wetland

E= Estuarine







**O04170 Oruaiti SH10 (Burgess)**

0 50 100 200 Meters

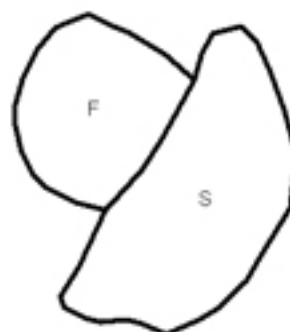


S= Shrubland

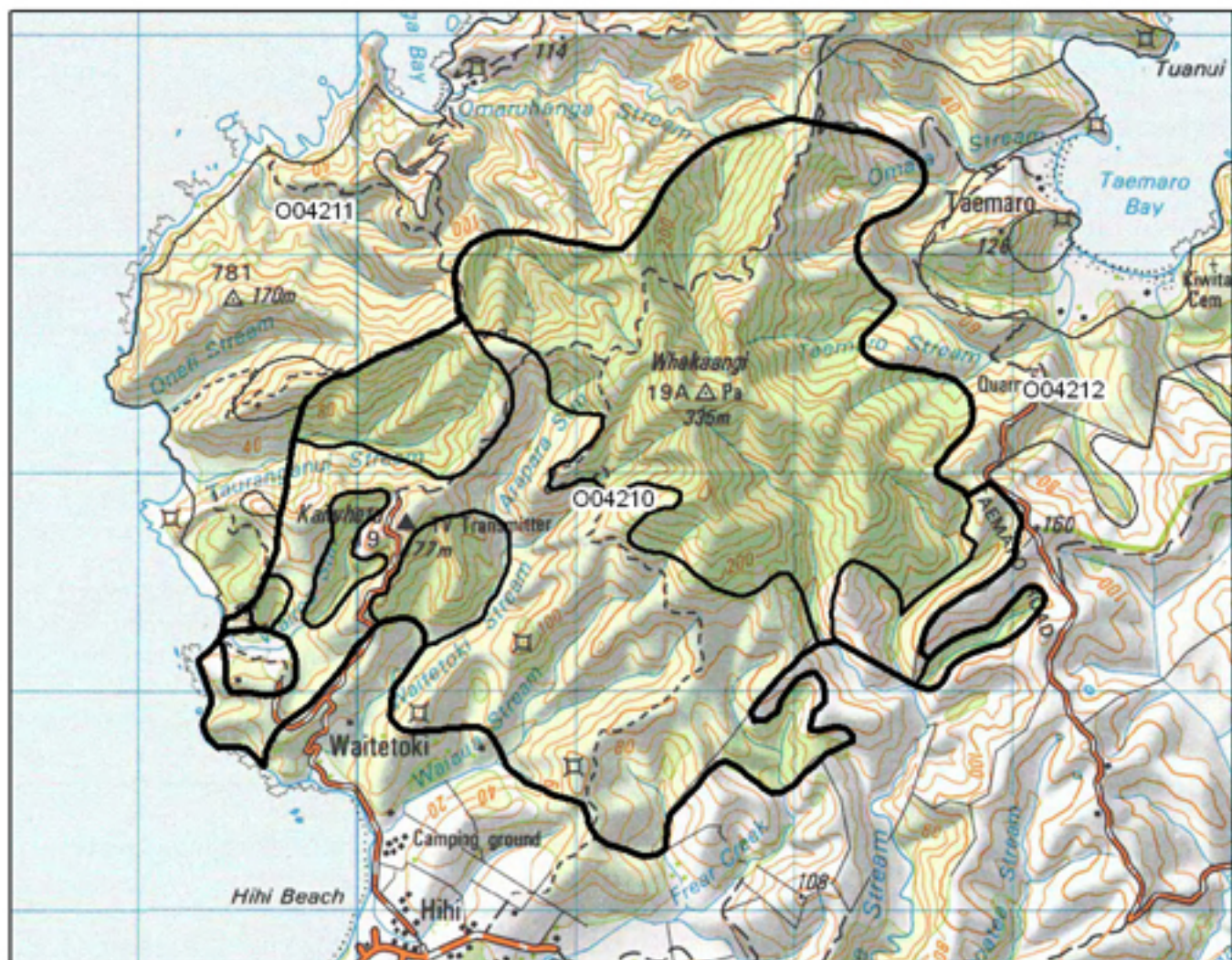
F= Forest

W= Wetland

E= Estuarine







## O04210 Whakaangi

0 500 1,000 2,000 Metres

S= Shrubland  
 F= Forest  
 W= Wetland  
 E= Estuarine







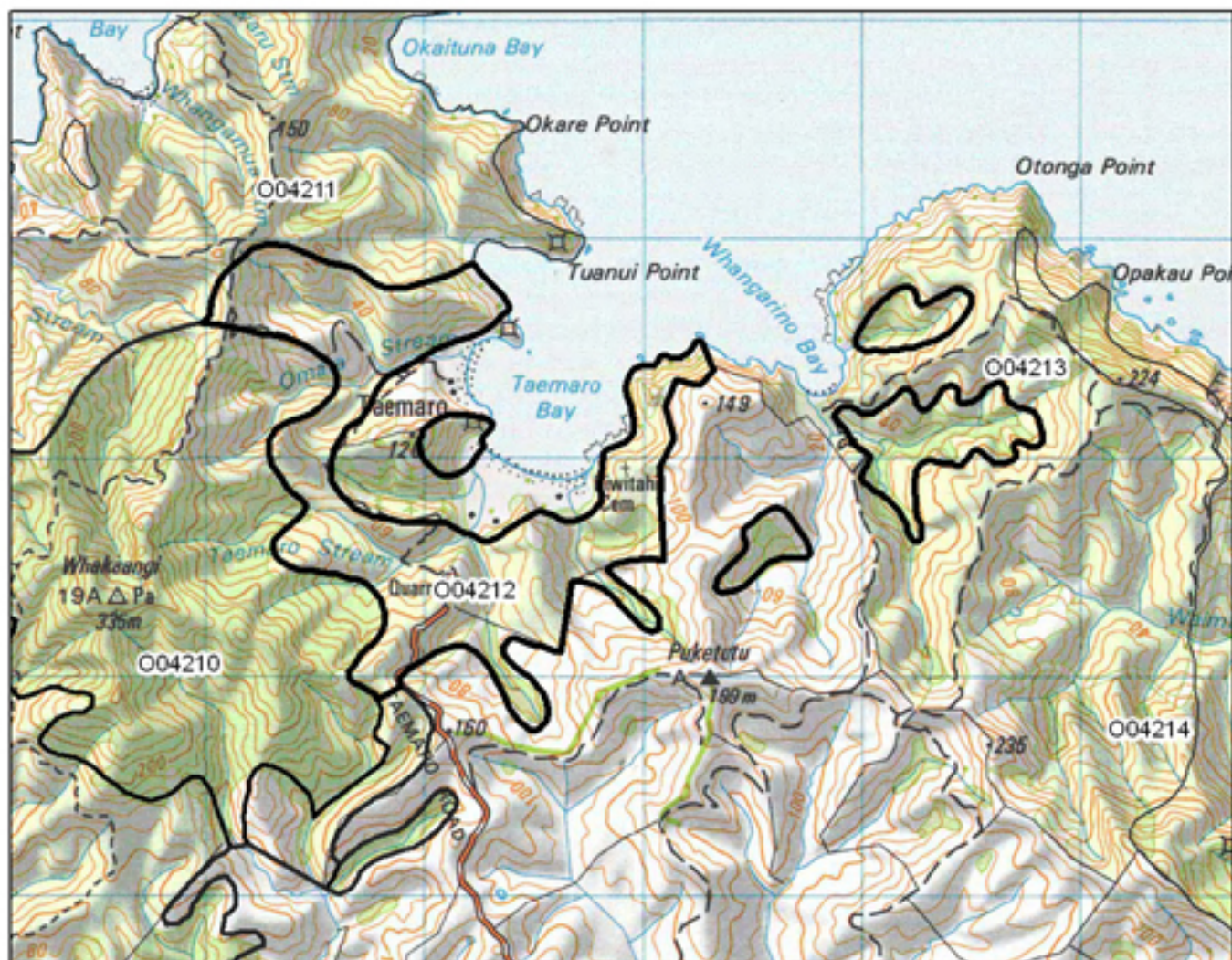
## O04211 Bergham Point

0 750 1,500 3,000 Metres

S= Shrubland  
 F= Forest  
 W= Wetland  
 E= Estuarine







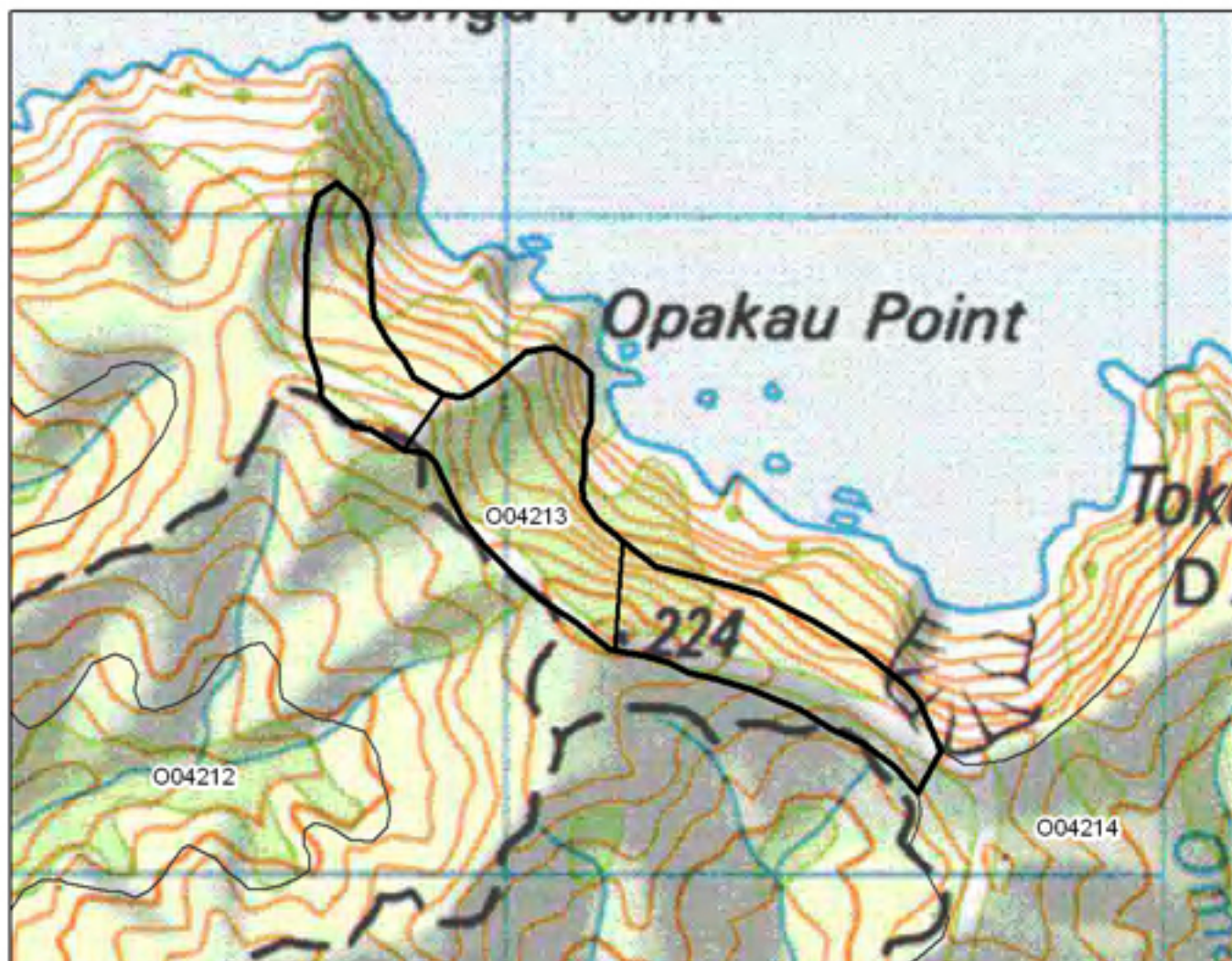
## O04212 Taemaro

0 625 1,250 2,500 Metres

S= Shrubland  
 F= Forest  
 W= Wetland  
 E= Estuarine



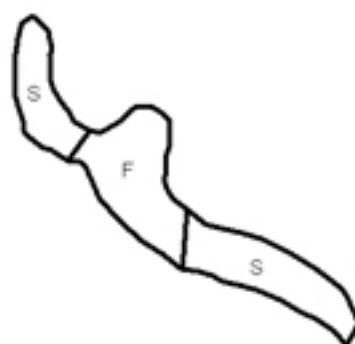




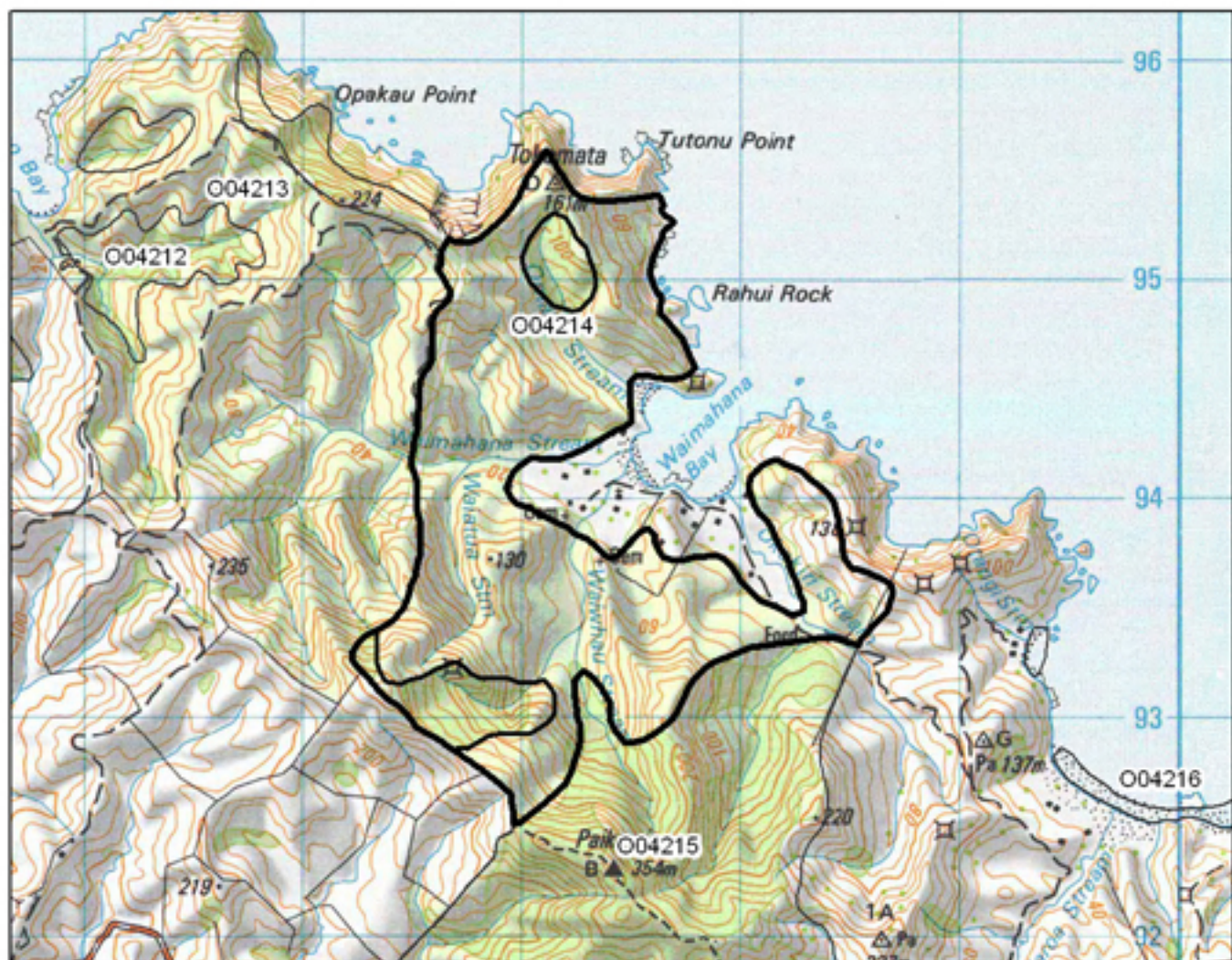
### O04213 Opakau Point

0 305 610 1,220 Metres

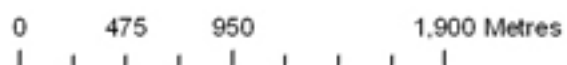
S= Shrubland  
 F= Forest  
 W= Wetland  
 E= Estuarine







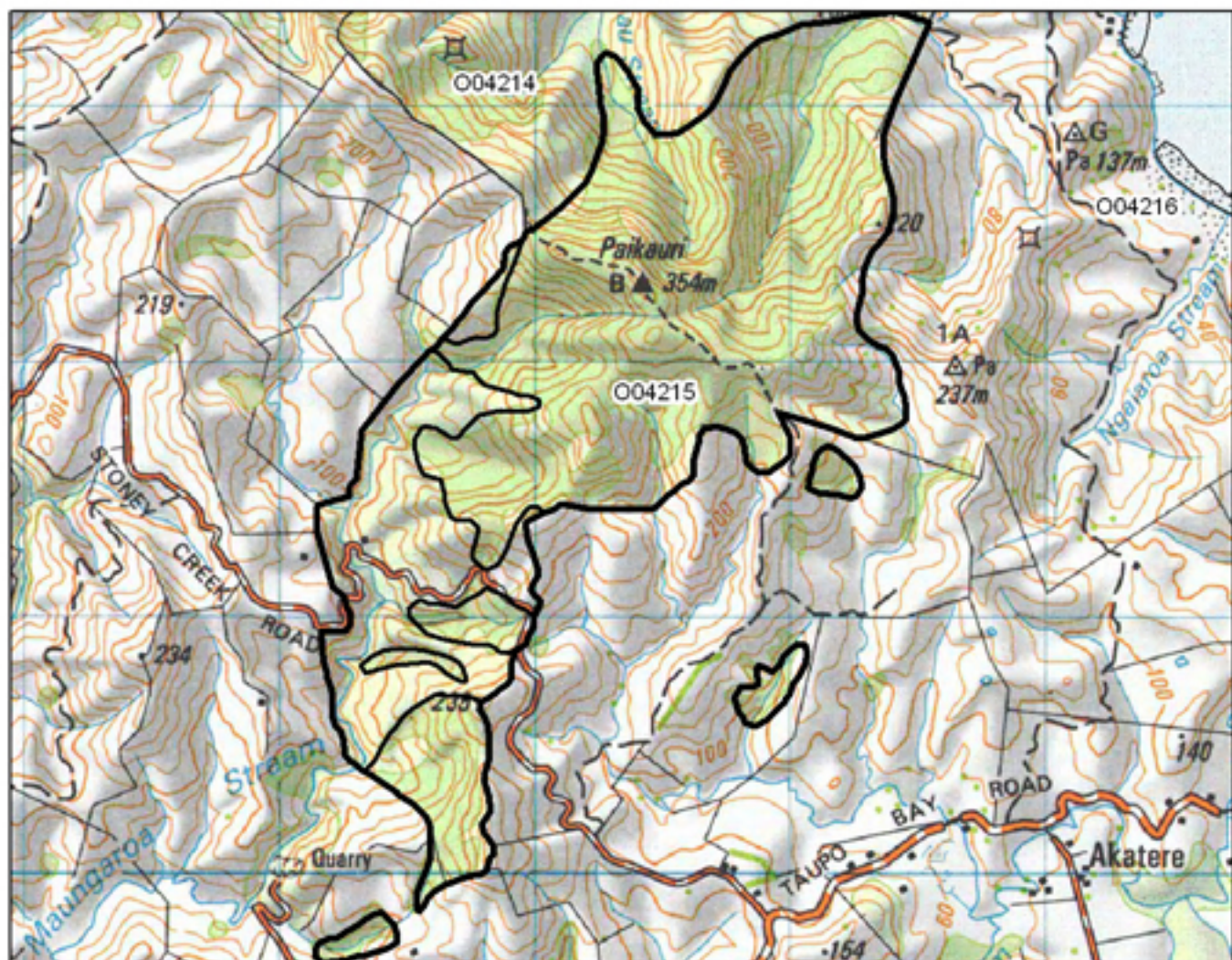
## 004214 Waimahana



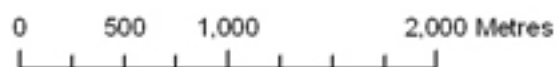
- S= Shrubland
- F= Forest
- W= Wetland
- E= Estuarine







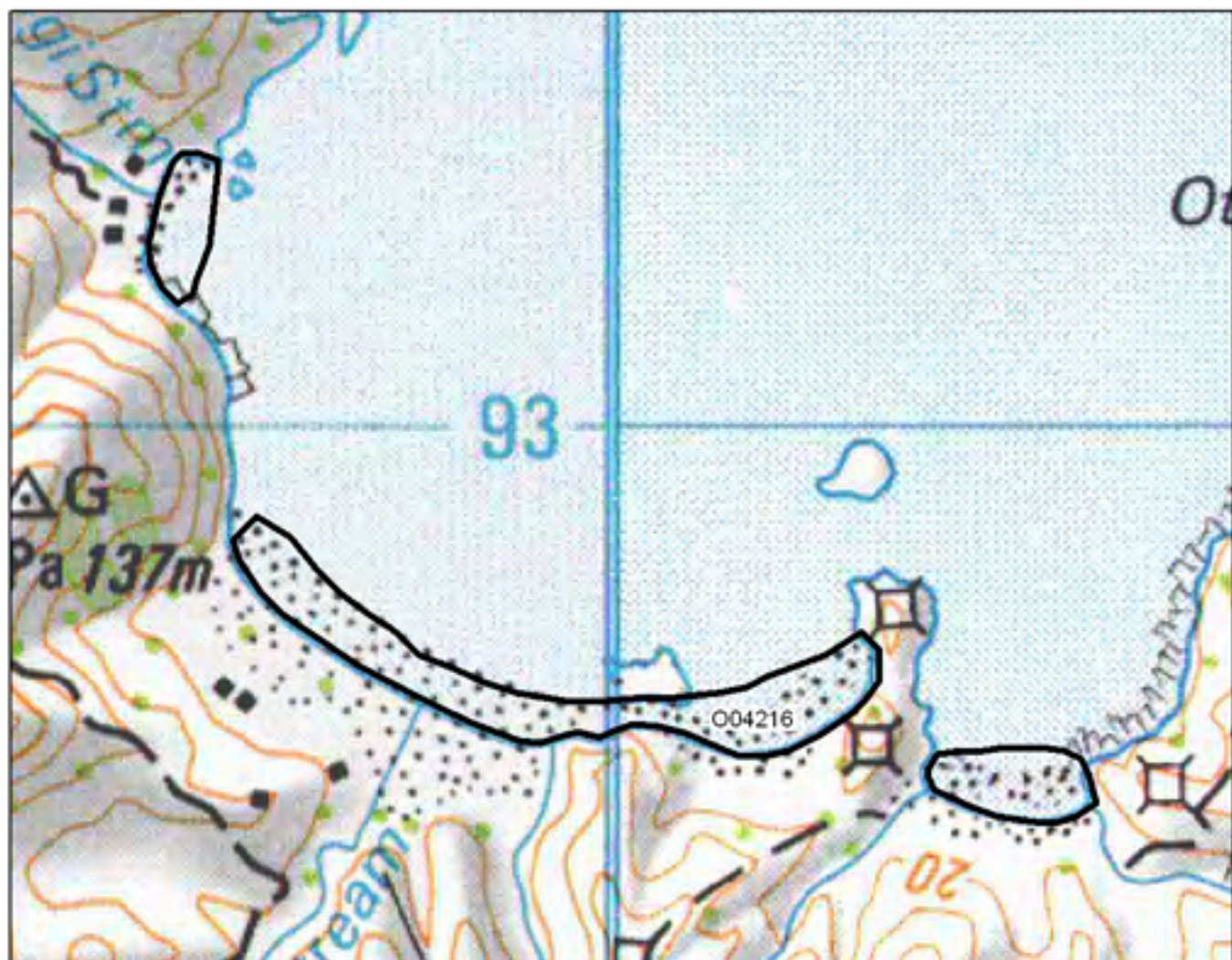
## O04215 Paikauri



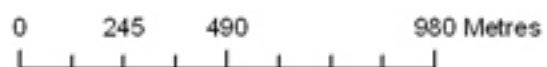
- S= Shrubland
- F= Forest
- W= Wetland
- E= Estuarine







### O04216 Motukahakaha Bays



- S= Shrubland
- F= Forest
- W= Wetland
- E= Estuarine

