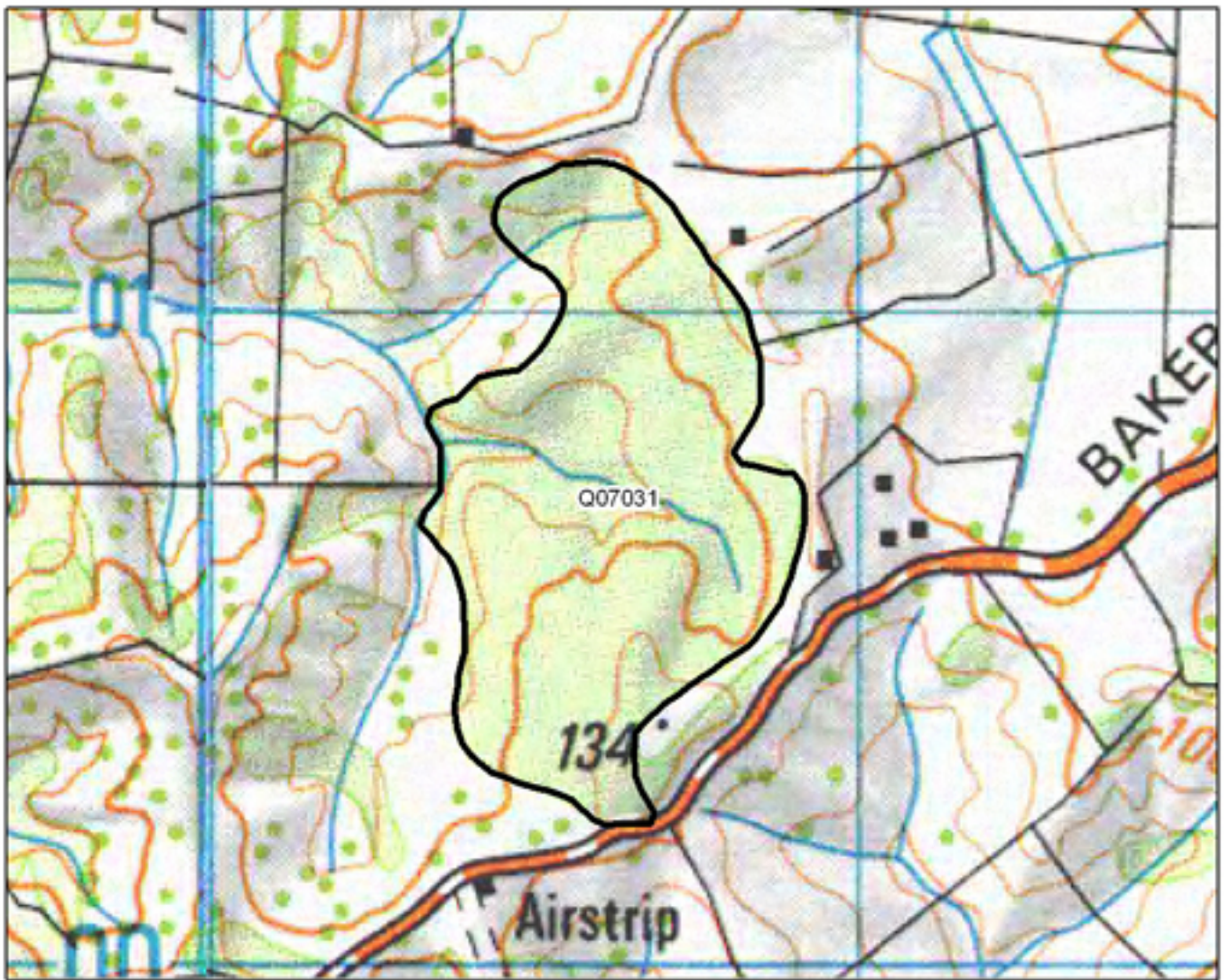


Q07030 Whatitiri Road Bush

0 250 500 1,000 Metres

- S= Shrubland
- F= Forest
- W= Wetland
- E= Estuarine





Q07031 Baker Road Bush

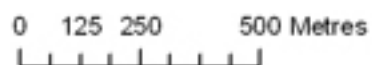
0 125 250 500 Metres
|-----|-----|-----|-----|-----|

- S= Shrubland
- F= Forest
- W= Wetland
- E= Estuarine



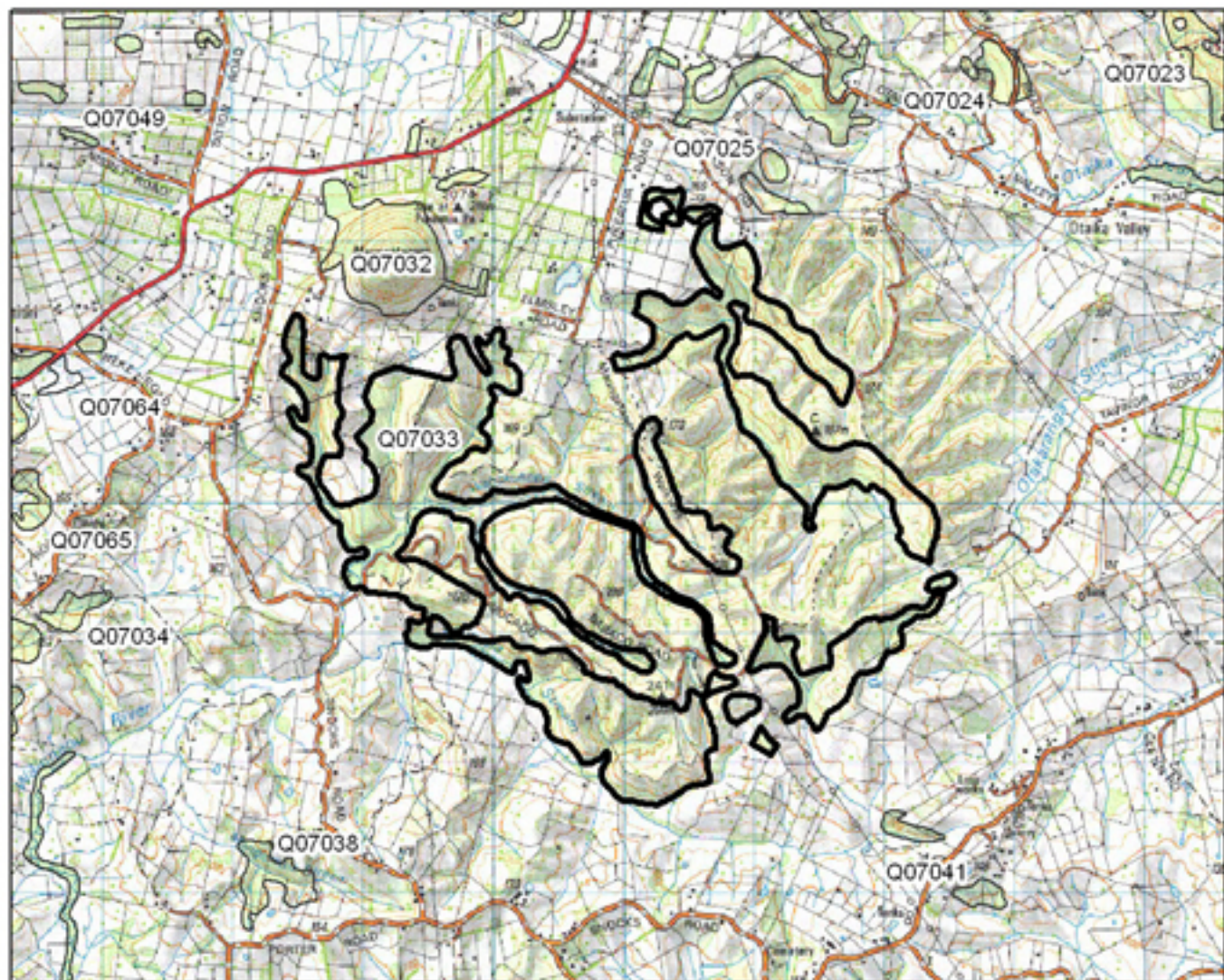


Q07032 Maungatapere Mountain



- S= Shrubland
- F= Forest
- W= Wetland
- E= Estuarine

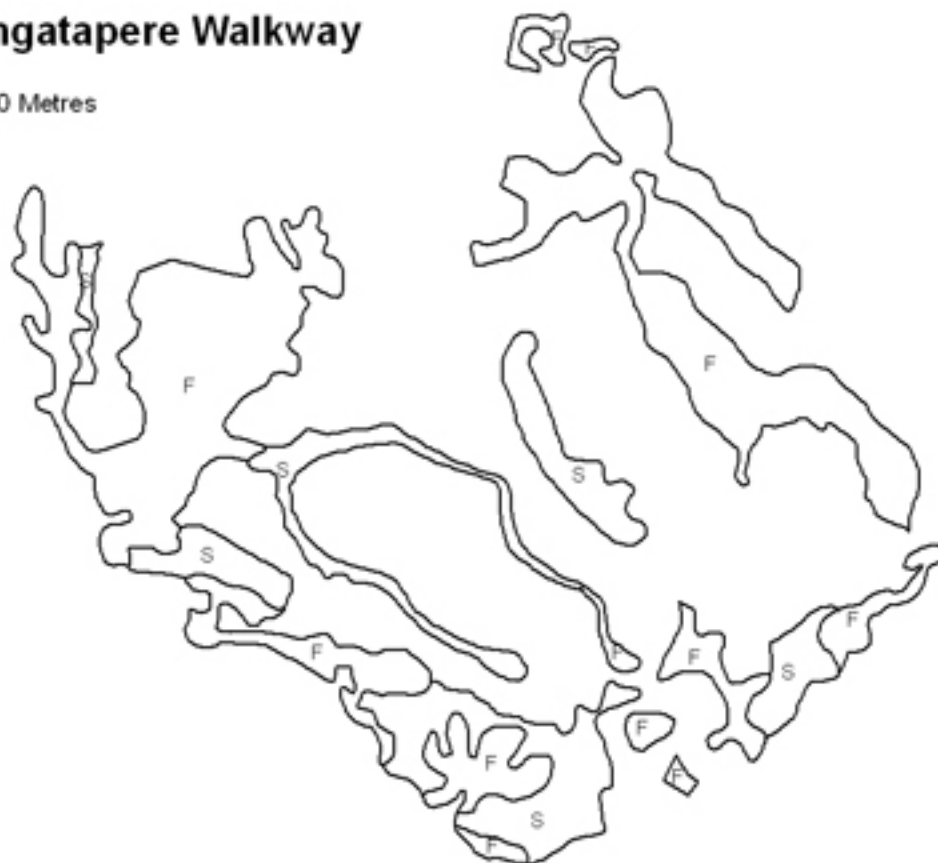


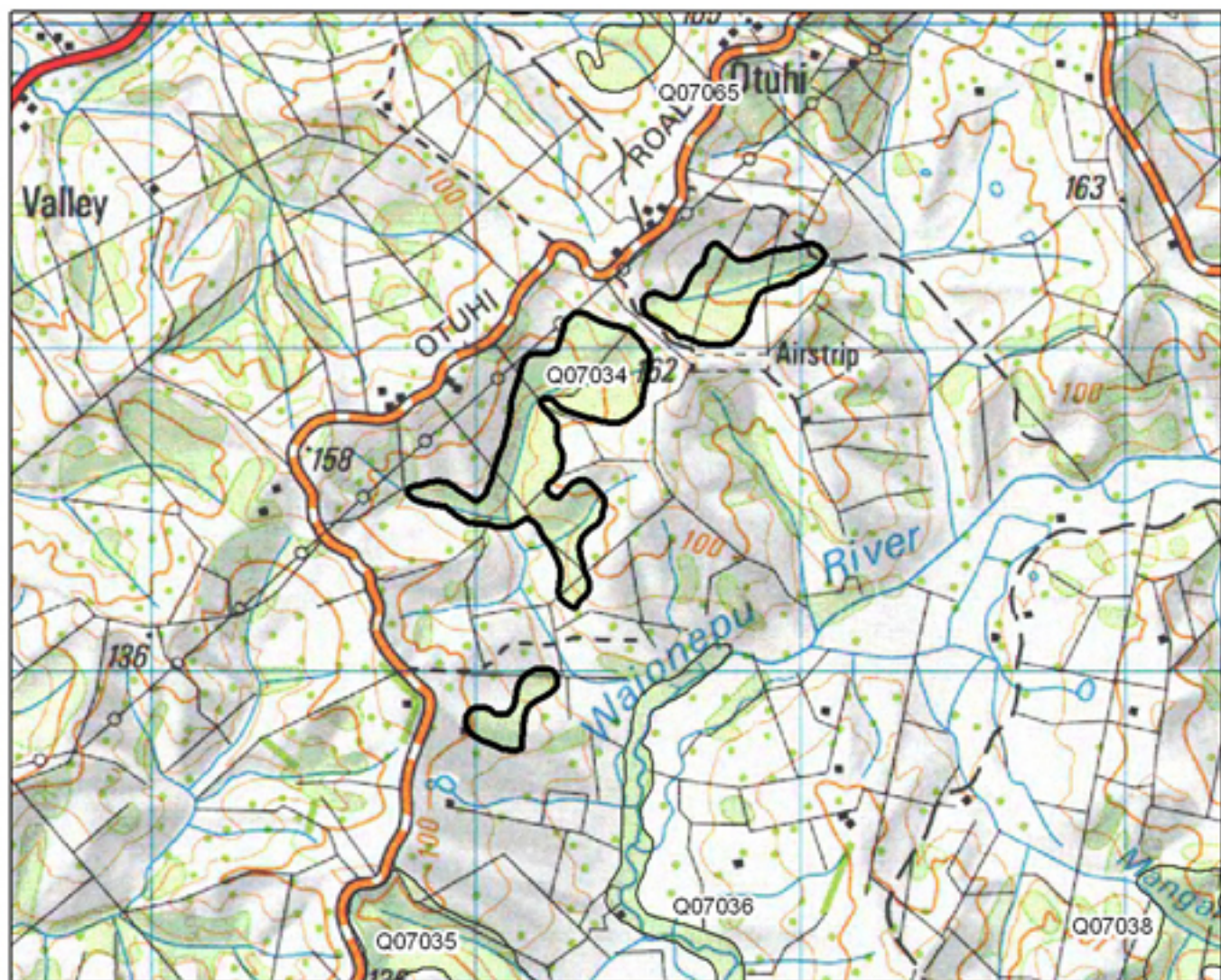


Q07033 Maungatapere Walkway

0 375 750 1,500 Metres

- S= Shrubland
- F= Forest
- W= Wetland
- E= Estuarine

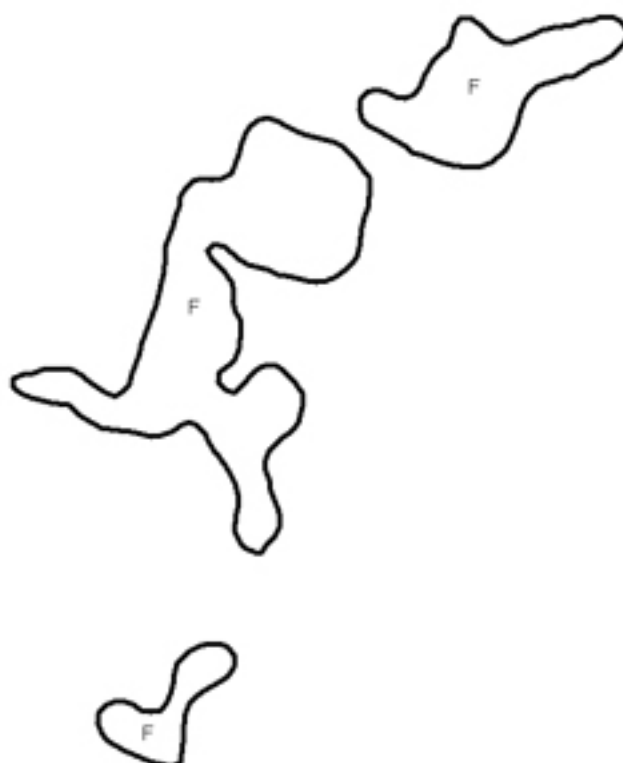


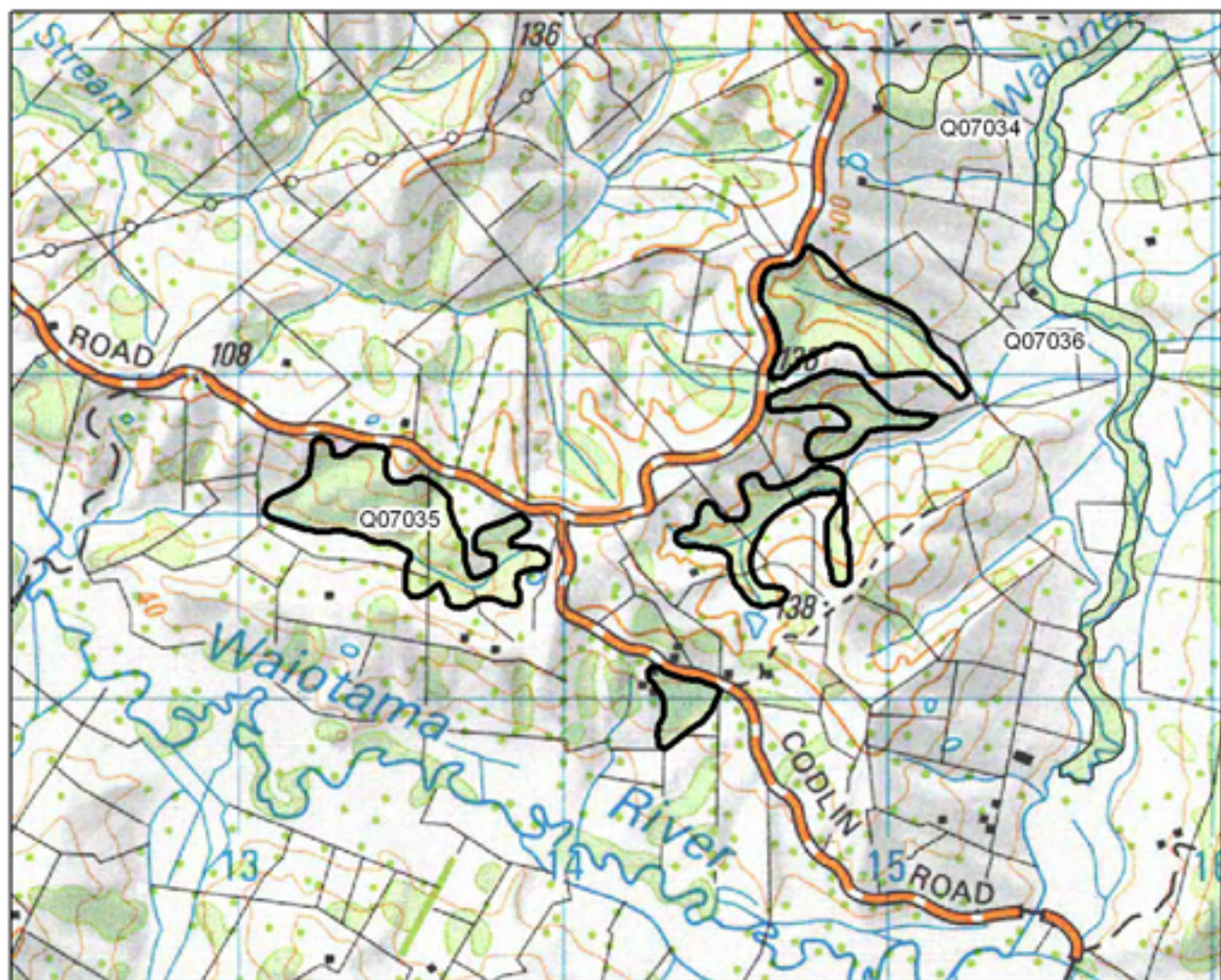


Q07034 Otuhi Road Bush

0 125 250 500 Metres

- S= Shrubland
- F= Forest
- W= Wetland
- E= Estuarine

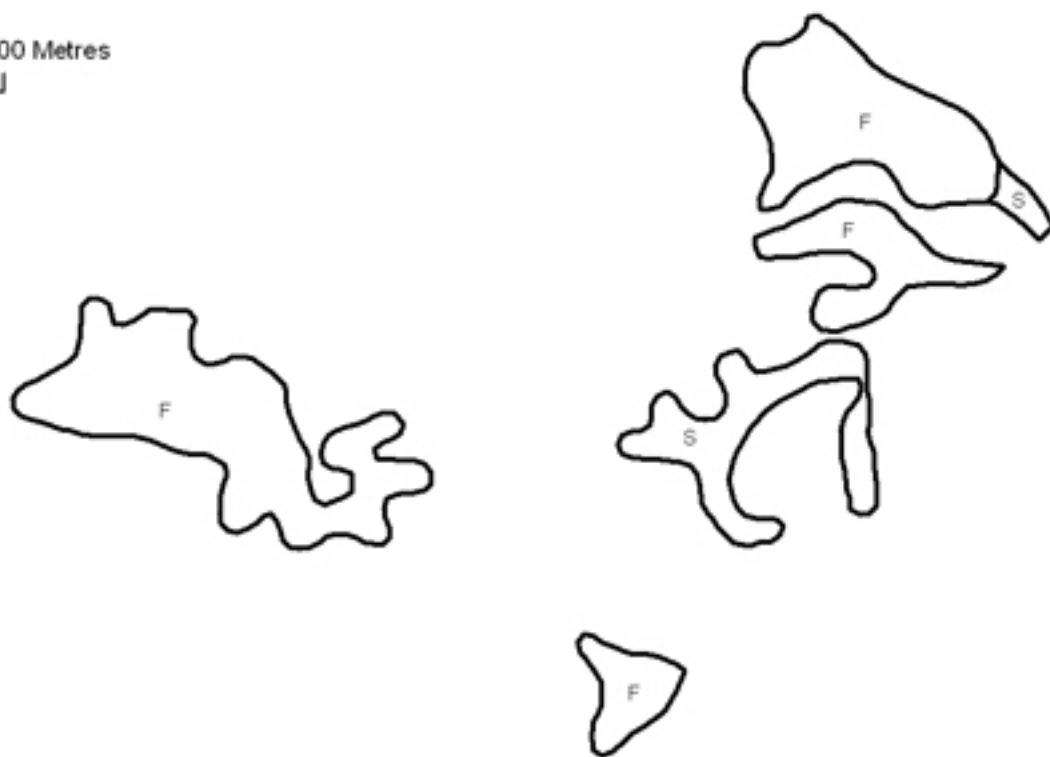




Q07035 Codlin Road Bush

0 125 250 500 Metres

- S= Shrubland
- F= Forest
- W= Wetland
- E= Estuarine





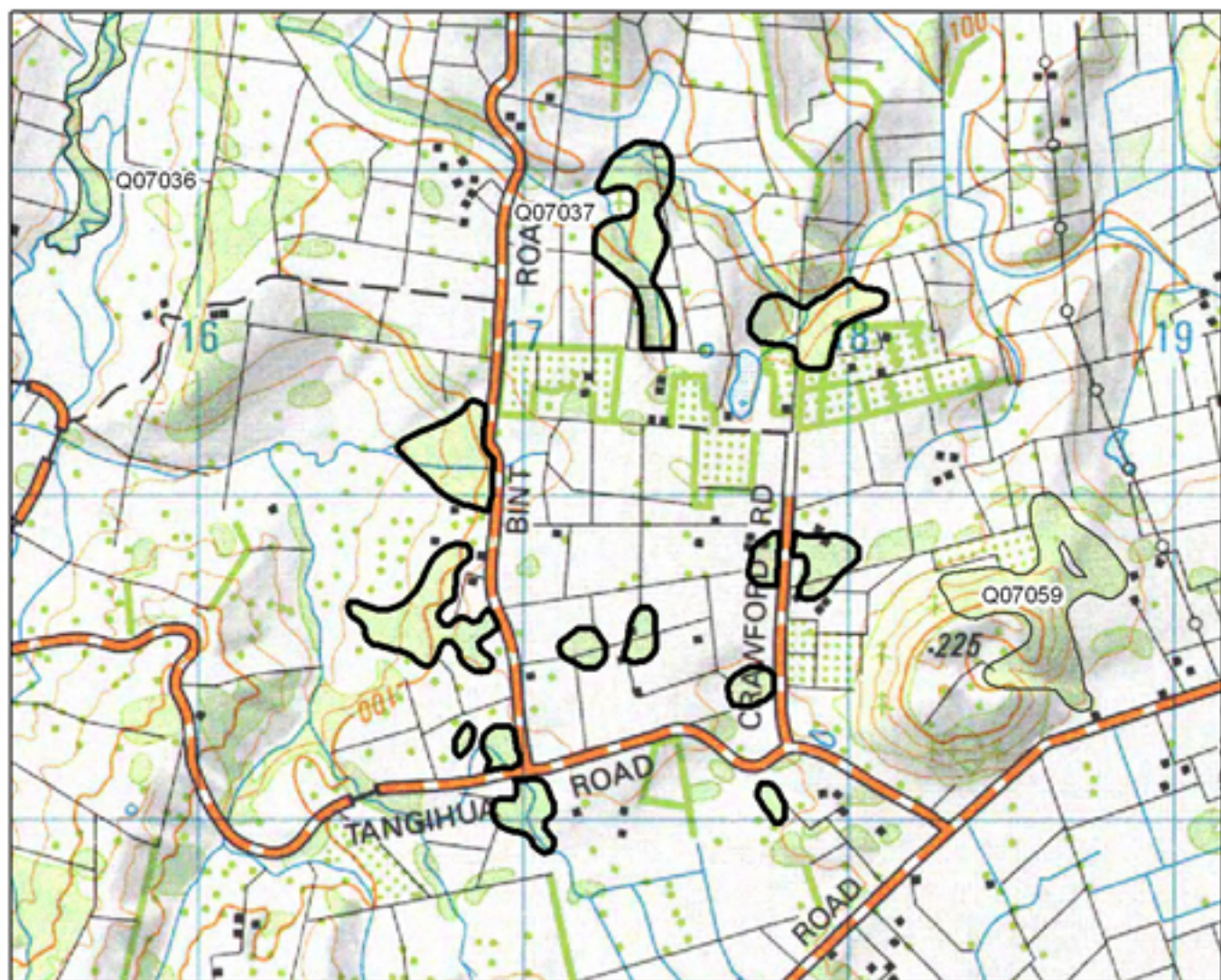
Q07036 Waionepu River

0 187.5 375 750 Metres

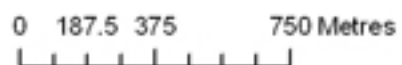


S= Shrubland
 F= Forest
 W= Wetland
 E= Estuarine



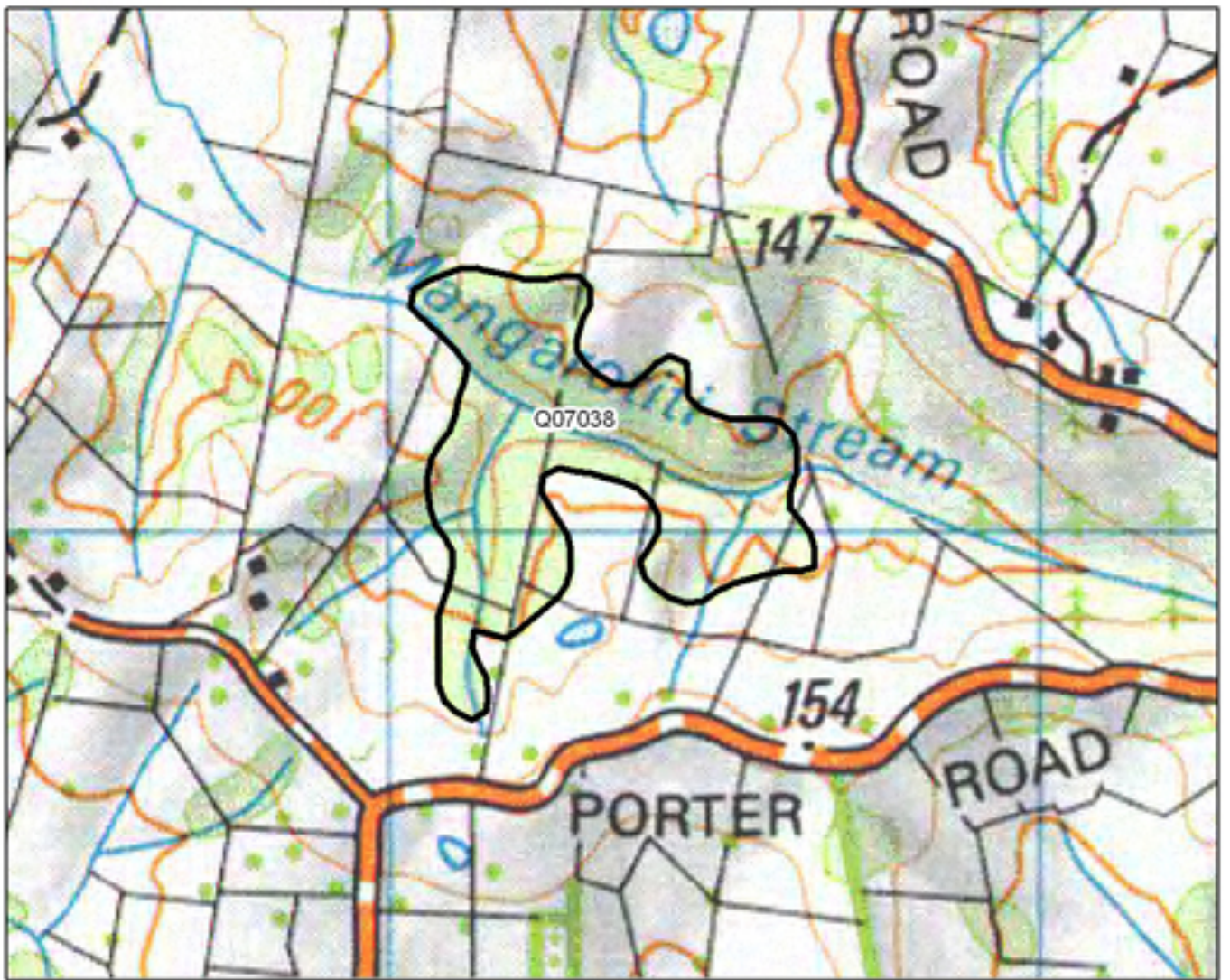


Q07037 Bint Road Bush

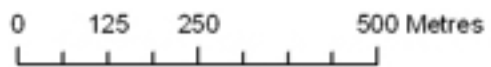


- S= Shrubland
- F= Forest
- W= Wetland
- E= Estuarine

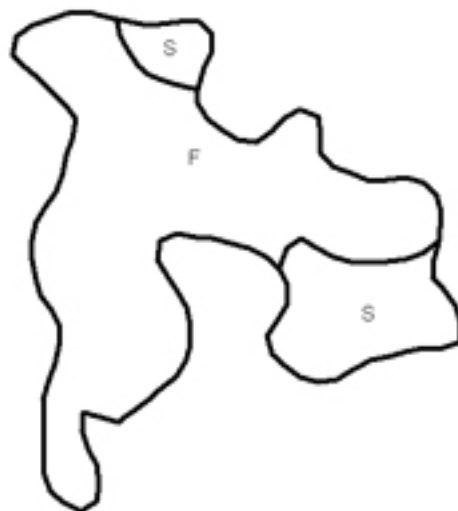


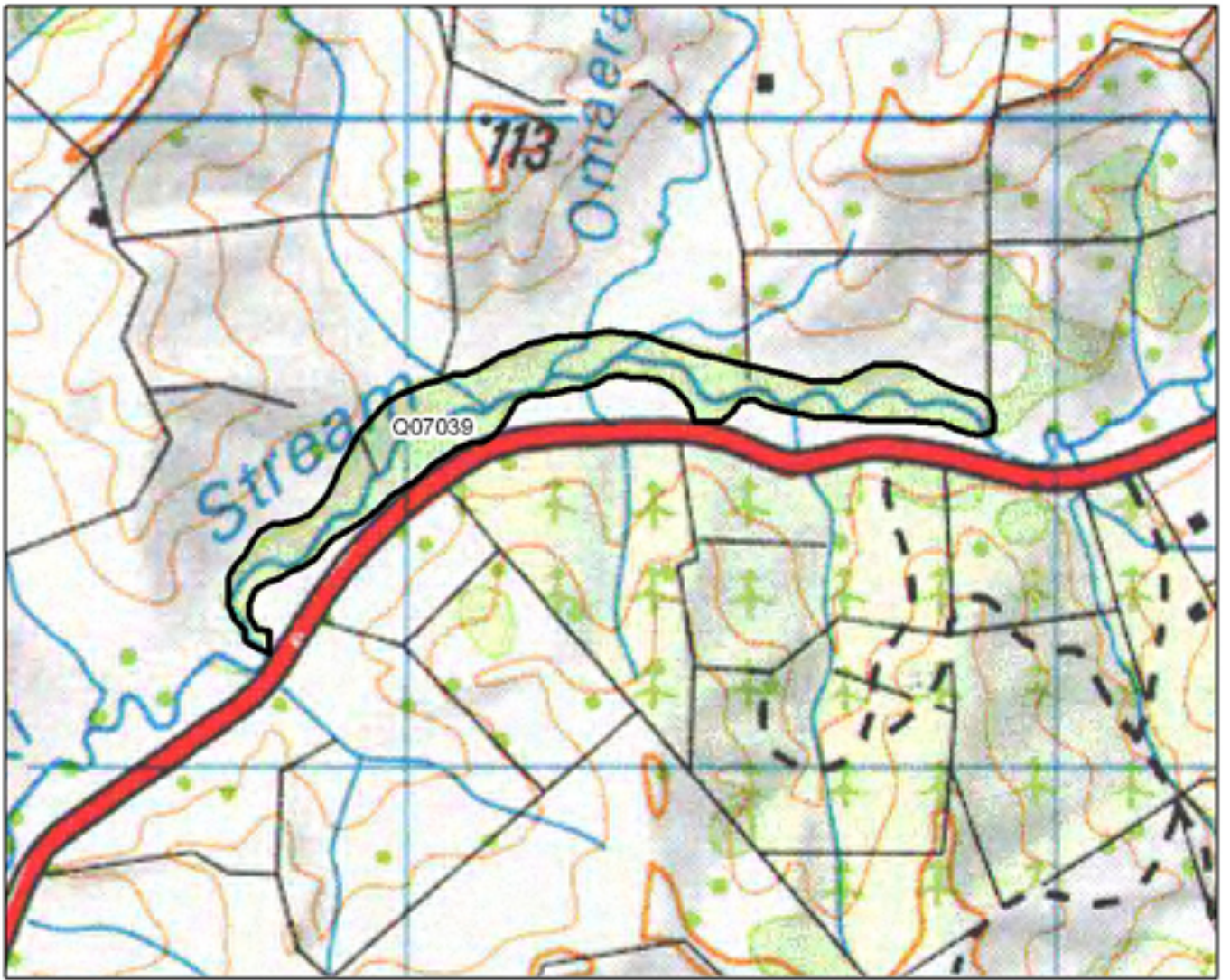


Q07038 Mangarotiti Stream

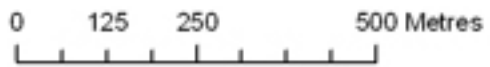


- S= Shrubland
- F= Forest
- W= Wetland
- E= Estuarine





Q07039 Wheki Stream Bush



- S= Shrubland
- F= Forest
- W= Wetland
- E= Estuarine

